

---

LEET (LEWIS DON).

--- Earth waves. [Harvard Mon. in Applied Sci. No. 2.]  
Cambridge, Mass., 1950.

Engin. Lib.

--- Another copy.

Geol. Lib.

--- and JUDSON (SHELDON).

--- Physical geology.

New York, 1954.

Geol. Lib.

---

LEETE (CHARLES HENRY).

--- Exercises in geography. 2nd ed. rev. and enlgd.

New York, 1902.

Geog. Lib.

LEETHAM (CLAUDE).

--- Luigi Gentili; a sower for the second spring.

Lond., 1965.

New Coll. Lib.

--- Rasmini; priest, philosopher and patriot. With an introd. by G. Bozzetti.

Lond., 1957.

~~.92 Ros. Lee~~  
.195 Ros. Lee.

LEEUEW (A.).

--- Der Hausknecht, oder Der lächerliche Zwey-Kampf. Ein Lustspiel in Versen aus dem Holländischen ... übersetzt.

Hamburg, 1748.

Ye. 10.29/4  
E.B. .8304/3

LEEUEW (GERARDUS VAN DER).

--- [Phänomenologie der Religion.] Religion in essence and manifestation; a study in phenomenology. Tr. by J.E. Turner. [Sir Halley Stewart Publ. No. 5.]

Lond., 1938.

New Coll. Lib.

--- [Vom Heiligen in der Kunst.] Sacred and profane beauty; the holy in art. Preface by M. Eliade. Tr. by D.E. Green.

Lond., 1963.

New Coll. Lib.

### Appendix

--- Pro regno pro sanctuario. Een bundel studies en bijdragen van vrienden en vereerders bij de zestigste verjaardag van G. van der L. Uitg. door een Commissie van Leerlingen en Oud-leerlingen onder redactie van W.J. Kooiman en J.M. van Veen.

Nijkerk, 1950.

.204 Lee.

ADDITIONS

LEETE (RICHARD).

— Changing patterns of family formation and dissolution in England and Wales, 1964-76. See STUDIES ON MEDICAL AND POPULATION SUBJECTS. No. 39.

LEETS (GEORG ALEKSANDROVICH).

— Абрам Петрович Ганнибал; биографическое исследование.

Таллин, 1980.

.9(4706) Gan. Lee.

LEEUEW (J.E. VAN LOHUIZEN DE). See LOHUIZEN-DE LEEUEW (J.E. VAN).

LEEUEW (VENANTIUS DE).

--- De Ebed Jahweh-profetieen; historisch-kritisch onderzoek naar hun ontstaan en hun betekenis. Avec un résumé en français Les chants de l'Ebed Yahvé; leur interprétation et leur portée prophétique. [Louvain. Univ. Cath. Diss. in Fac. Theol. Ser. 3, Tom. 2.]

Assen, 1956.

.2321 Lee.

--- Another copy.

New Coll. Lib.

--- De koninklijke verklaring van de Ebed-Jahweh-Zangen. Avec un résumé en français. [Anal. Lovaniensia Bibl. et Orient. Ser. 2, Fasc. 33.]

Louvain [1952?]

New Coll. Lib.

LEEUEWARDEN.

--- Pharmacopoea Leovardiensis Galenico-chymica, collegii medici ejusdem loci operam dormata ...

Leovardiae, 1687.

\*I.33.54.

LEEUEWEN (AREND THEODOOR VAN).

--- Christianity in world history; the meeting of the faiths of East and West. Foreword by H. Kraemer. Tr. by H.H. Hoskins.

Lond., 1964.

.27 Lee.

--- Two other copies.

New Coll. Lib.

LEEUEWEN (BARTHOLOMAEUS VAN).

--- De actionibus hereditariis.

Lugd. Bat., 1680.

QP. 992/1.

LEEUEWEN (CORNELIUS VAN).

--- Disput. ... de empyemate.

Lugdini Batavorum (1717.)

QP. 825/27.

--- Hippocrates de circuitu sanguinis, exercitatio xxiii. [Th.]

Lugduni Batavorum, 1662.

JA 1013/23  
~~Zc. 8.5/23.~~

--- Another copy.

H.18.60/6.



## ADDITIONS

LEEJW (RONALD DE).

--- SILLEVIS (JOHN) and DUMAS (CHARLES).

--- eds. The Hague School; Dutch masters of the 19th century.  
[Catalogue of an exhibition shown at the] ... Royal Academy  
of Arts ... 1983. See HAGUE (THE). GEMEENTEMUSEUM.

---

LEEUWEN (CORNELIS VAN).

--- Le développement du sens social en Israël avant  
l'ère chrétienne. [Stud. Semit. Neerlandica.]

Assen, 1955.

New Coll. Lib.

LEEUWEN (IOHANNES) of Utrecht.

--- Disputatio philosophica continens positiones politicas ... Sub praesidio  
... A. Senguerdii. [Th.]

Ultraiecti, 1639.

E.B. .504/4

LEEUWEN (JOANNES VAN).

--- Commentationes Homericae.

Lugd. Bat., 1911.

\*W.4.35.

--- Enchiridium dictionis epicae.

Lugduni Batavorum, 1894.

W\*8.3.

--- Editio altera aucta et emendata.

Lugduni Batavorum, 1918.

.883:.416 Lee.

--- Another copy.

Classical Lib.

--- Prolegomena ad Aristophanem.

Lugduni Batavorum, 1901.

.8824 Lee.

LEEUWEN (JOHANNES VAN).

--- Pindarus' tweede olympische ode. Inleiding, tekst met vertaling en  
commentaar, analyse. [Th.] 2 dle.

[Leiden, 1965?]

.8845 Lee.

LEEUWEN (LEONARDUS VAN).

--- Diss. ... de artis obstetriciae hodiernorum prae veterum praestantia,  
ratione partus difficilis et praeternaturalis.

Lugd. Bat., 1783.

QP. 914/5.

LEEUWEN (PETRUS WILHELMUS NICOLAAS MARIA VAN).

--- Inorganic complexes of ligands containing the thiomyl group. [Th.]

Leiden, 1967.

Chem. Lib.

## ADDITIONS

LEEUWEN (JACOBUS MARIA VAN).

--- Sodium chloride in cattle nutrition. [Th., Utrecht.]  
Wageningen, 1970. Vet. Lib.

LEEUWEN (LOUIS TH. VAN).

--- Early family sociology in Europe. See HOWARD (RONALD L.).  
A social history of American family sociology, 1865-1940.  
With an additional chapter ... by L. Th. Van L.

LEEUWEN (SIMON VAN).

--- Commentaries on the Roman-Dutch law. Tr. ...

Lond., 1820.

E.20.28.

--- De origine et progressu juris civilis Romani authores et fragmenta veterum jurisconsultorum. Cum notis A. Vinnii ... Auctore et collectore S.L.

Lugd. Bat., 1672.

D.S.e.7.19.

--- Another copy.

Law Lib.

LEEUWEN (WILLEM STORM VAN). See STORM VAN LEEUWEN (W.)

LEEUWENBERG (A.J.M.).

--- The Loganiaceae of Africa VIII, Strychnos III ...  
[Wageningen, Landbouwhoges. Mededel. 69-1.]

Wageningen, 1969.

Botany Lib.

LEEUWENBERG (EMANUEL LAURENS JAN).

--- Structural information of visual patterns; an efficient coding system in perception. [Th., Nijmegen.]

The Hague [1967.]

.1521 Lee.

--- and BUFFART (H.F.J.M.).

--- eds. Formal theories of visual perception.

Chichester [1978.]

Bionics Lib.

LEEUWENHOEK (ANTONI VAN).

--- The collected letters of Antoni van Leeuwenhoek. (A complete edition of the works of Van Leeuwenhoek, annotated and considered in the perspective of the history of science and medicine, with special reference to general and biological microscopy.) Ed., illustrated and annotated by a committee of Dutch scientists (vol. 7- issued under the auspices of the Leeuwenhoek Commission of the Royal Netherlands Academy of Sciences and Letters). [Dutch and Eng.] Vols. 1-9.

Amsterdam.

F .5(492)09 Lee.

\*\*\* Each vol. has also a Dutch title-page.

[Continued overleaf.]

ADDITIONS

LEEUWEN (THEODOOR MARIUS VAN).

— The surplus of meaning; ontology and eschatology in the philosophy of Paul Ricoeur. [Amsterdam Stud. in Theol. Vol. 2.]

Amsterdam, 1981.

.1949 Ric. Lee.

LEEJWENHOEK (ANTONI VAN) [continued].

- |    |                                 |       |
|----|---------------------------------|-------|
| 1. | 1673-1676.                      | 1939. |
| 2. | 1676-1679.                      | 1941. |
| 3. | 1679-1682.                      | 1948. |
| 4. | 1683-1684.                      | 1952. |
| 5. | 1685-1686.                      | 1957. |
| 6. | 1686-1687.                      | 1961. |
| 7. | 1687-1688. (Ed. by J.J. Swart.) | 1964. |
| 8. | 1688-1692. (Ed. by J.J. Swart.) | 1967. |
| 9. | 1692-1694. Ed. by D.J. Heniger. | 1976. |

[Continued overleaf.]

## ADDITIONS

LEEUEWENHOEK (ANTONI VAN).

— The collected letters of Antoni van Leeuwenhoek. A complete edition of the works of Van Leeuwenhoek, annotated and considered in the perspective of the history of science and medicine, with special reference to general and biological microscopy. Issued under the auspices of the Leeuwenhoek-Commission of the Royal Netherlands Academy of Sciences and Letters. [Dutch and Eng.] Vol. 10.

Lisse.

F .5(492)09 Lee.

10. 1694-1695. Ed. by L.C. Palm. 1979.

LEEJEWENHOEK (ANTONI VAN) [continued].

--- A. à L. ... opera omnia, seu arcana naturae, ope exactissimorum microscopiorum detecta, experimentis variis comprobata, epistolis ad varios illustres viros ut et ad integram quae Londini floret sapientem Societatem ... datis comprehensa, & quatuor tomis distincta. Ed. novissima, prioribus emendatior, cum indicibus ... 7 pts. (in 4).

Lugduni Batavorum, Delphis, 1722-30, 22, 19.

G\*21. 10, 4, 8, 5.

\*\*\* Tom. 1 only has a collective title-page. Pt. 3 of tom. 1 (which has a special title-page reading 'Continuatio epistolarum, datarum ad longe celeberrimam Regiam Societatem Londinensem,' etc.) is of the 3rd ed., 1730, and is probably a substitute in the above copy for an edition of an earlier date. Tom. 4 only has the imprint 'Delphis'.

1. [Three collections of letters.] 3 pts.

2. Arcana naturae detecta. Continuatio arcanorum naturae detectorum. 2 pts.

3. Epistolae ad Societatem Regiam Anglicam, et alois illustres viros, seu continuatio mirandorum arcanorum naturae detectorum, quadraginta epistolis contentorum, quae ex Belgica in Latinam linguam translatae sunt.

4. Epistolae physiologicae super compluribus naturae arcanis ...

--- Another copy. Vol. 4.

G\*21.9.

--- The select works of A. van L., containing his microscopical discoveries ... Tr. ... by S. Hoole. Pts. 1-2 (in 1).

Lond., 1798-99.

JA 3616  
~~Physiol. Lib.~~

--- Another ed. 3 pts. (in 2).

Lond., 1800, 1799-1807.

\*\*\* Pt. 2, pp. i-viii, a-h not mentioned in the index.

~~\*G.1.6-7.~~  
JA 3223-4

--- Anatomia, seu interiora rerum, cum animatarum tum inanimatarum, ope ... microscopiorum detecta ... Una cum discursu et ulteriore dilucidatione epistolis ... comprehensa. 2 pts.

Lugd. Bat., 1687-89.

O\*28.11.

--- Arcana naturae detecta ab A. van L.

Delphis Batavorum, 1695.

~~\*L.21.13.~~  
JA 900

[Continued overleaf.]



ADDITIONS

LEEUWENHOEK (ANTONI VAN).

— The collected letters of A. van Leeuwenhoek ...  
[Dutch and Eng.] Vol. 11.

Amsterdam.

F .5(492)09 Lee.

11. 1695-1696. Ed. by L.C. Palm.

1983.

LEEUEWENHOEK (ANTONI VAN) [continued].

- Antoni van Leeuwenhoek on the circulation of the blood; Latin text of his 65th letter to the Royal Society, Sept. 7th, 1688. Facsimile [from *Arcana naturae detecta*, 1695]. With an introd. by A. Schierbeek. [Dutch Class. on Hist. of Sci. 2.]

Nieuwkoop, 1962.

G.L. .61211 Lee.

- See DOBELL (CLIFFORD). A. van L. and his "little animals"; being some account of the father of protozoology and bacteriology ... Collected, tr. and ed. from his printed works, unpublished manuscripts, and contemporary records ...

- See SCHIERBEEK (ABRAHAM). Measuring the invisible world; the life and works of A. v. L.

LEEUVES (WILLIAM).

- See MOON (A.M.). In memoriam. The Rev. W.L.

ADDITIONS

LEEVEERS (MAUREEN).

--- NEE (PAULINE) and ROGERS (JENNIFER).

--- A fair hearing? Possession hearings in the County Court;  
a report ... [S.H.A.C., Lond. Housing Aid Centre Publ.]

Lond., 1977.

P .33353(421) Lee.

LEEUWENHOEK (ANTONI VAN).

--- See BIDLOO (GOVARD). Letter from G.B. to A. van L.  
about the animals which are sometimes found in the  
liver of sheep ...

LEF.

[---] Леф; журнал Левого Фронта Искусств, Отв. ред.  
В.В. Маяковский. Nos. 1-3. 1923. [Slavistic Pr. and  
Repr. 196/1.] The Hague, 1970. Per. .89 Lef.

~~[LEF.]~~

--- Леф; журнал левого фронта искусств.  
Отв. ред. В.В. Маяковский. Nos. 4-5.  
1924. [Slavistic Pr. and Reprs. 196/2.]

The Hague, 1970.

Per. .89 Lef.

\*\*\* For continuation see NOVYY LEF.

LEF (AN) KERNEWEK.

--- Kemysk Kernewek; a Cornish miscellany.  
Camborne, 1964.

Celtic Lib.

LEFANU (ALICIA).

--- Don Juan de las Sierras; or, El empecinado; a romance. Vols. 1, 3.  
Lond., 1823.

~~HL. 120.8.43-44.~~  
X. Coll. 773

3 vols (in 1)

--- Another copy. Vol. 1.

~~HL. 120.8.42.~~  
X. Coll. 773

--- Leolin Abbey. A novel. 3 vols. (in 2)  
Lond., 1819.

~~HL. 122.4.57-59.~~  
X. Coll. 1707-1708

--- Memoirs of the life and writings of Mrs. F. Sheridan. With remarks upon  
a ... life of the Rt. Hon. R.B. Sheridan, etc.

Lond., 1824.

.82269 She. Lef.

LE FANU (JOSEPH SHERIDAN).

--- The evil guest. With ... illustrations by B. Le Fanu.  
Lond. [1894.]

O.S. .82389 LeF.

[---] The fortunes of Colonel Torlogh O'Brien; a tale of the wars of King  
James. [Anon.]

Lond., n.d.

O.S. .82389 LeF.

--- The house by the church-yard. Introd. by E. Bowen. [Doughty Lib. Vol. 12.]  
Lond. [1968.]

.82389 LeF.

--- In a glass darkly. With numerous illustrations by E. Ardizzone.

Lond., 1929.

.82389 LeF.

--- Uncle Silas; a tale of Bartram-Haugh. New ed.

Lond., 1893.

O.S. .82389 LeF.

[Continued overleaf.]

ADDITIONS

LE ~~C~~ANU (JOSEPH SHERIDAN).

---The cock and anchor. Ed. and introduced by  
H. Van Thal. [The First Novel Lib. 12.]

Lond., 1967.

.82389 Le F.

--- A strange adventure in the life of Miss Laura Mildmay;  
a tale from Chronicles of golden friars. With an  
introductory note by H. Van Thal ... 2nd impr.

Lond., 1947.

.82389 Le F.

LE FANU (JOSEPH SHERIDAN) [continued].

--- Uncle Silas. Put into Basic by M. Bottrall.  
Lond., 1951.

Ling. Lib.

--- See BROWNE (NELSON). Sheridan Le Fanu.

--- See ELLIS (S.M.). Wilkie Collins, Le F., ...

LE FANU (WILLIAM RICHARD) Commissioner of Public Works.

--- Seventy years of Irish life; being anecdotes and reminiscences.

Lond., 1893.

\*R.2.50.

LE FANU (WILLIAM RICHARD) Librarian.

--- A bio-bibliography of Edward Jenner, 1749-1823.

Lond., 1951.

Ref. .614521 Jen. LeF.

--- comp. British periodicals of medicine; a chronological list. Repr.  
from Bulletin of the Institute of the History of Medicine, Vol. 5, Nos. 8  
and 9 ... and Vol. 6, No. 6 ...

Baltimore, 1938.

C.M.L.

--- Another copy.

Ref. .6105016 Lef.

--- comp. A catalogue of the portraits and other paintings, drawings and  
sculpture in the Royal College of Surgeons of England. See ROYAL COLLEGE  
OF SURGEONS OF ENGLAND.

--- comp. See LISTER (JOSEPH LISTER, Lord). A list of the original writings  
of Joseph, Lord Lister, O.M.

LE FAUCHEUR (MICHEL).

--- An essay upon the action of an orator ... Done out of French. [Anon.]

Lond.-[1680?]

T.23.77.

--- Another copy.

Zp.12.36/4.

[Continued overleaf.]

## ADDITIONS

LE FANU (JOSEPH SHERIDAN).

--- See McCORMACK (W.J.). S. Le F. and Victorian Ireland.

--- See BEGNAL (MICHAEL H.). J.S.L.

LE FANU (WILLIAM RICHARD) Librarian.

--- comp. John Hunter; a list of his books.

Cambridge, 1946.

Ref. .617(4207)092 Hun.  
Le F.

LE FAUCHEUR (MICHEL) [continued].

--- Sermons sur le quatriesme chapitre de l'epistre aux Ephesiens.

Paris, 1642.

A.15.3.

LEFCOURT (ROBERT).

--- ed. Law against the people; essays to demystify law, order and the courts.

New York [1971.]

.34(73)04 Lef.

--- 1st Vintage Book ed. New York, 1971.

Law Lib.



ADDITIONS

LEFCOURT (HERBERT M.).

— Locus of control; current trends in theory and research.  
Hillsdale, 1976. .153 Lef.

--- 2nd ed.

Hillsdale, 1982. .153 Lef.

LEFEBER (LOUIS).

--- Allocation in space; production, transport and industrial location.  
[Contrib. to Econ. Analysis, 14.]

Amsterdam, 1958.

.338<sup>018</sup>Lef.

--- Location and regional planning. [Center of Planning and Econ. Res.  
Training Seminar Ser. 7.]

Athens, 1966.

Econ. Lib.

LEFÉBURE (EUGÈNE).

--- Les hypogées royales de Thèbes ... Seconde division. Notice des hypogées,  
etc. [Annales du Musée Guimet, tom. 16.]

Paris, 1889.

LL.15.4.16.

--- Le mythe Osirien. 2 pts. (in 1). [Lith.] [Études égyptologiques,  
3-4.]

Paris, 1874-75.

Yt.2.13/3.

--- Un des procédés du démiurge égyptien. [Annales du Musée Guimet, tom. 10.]

Paris, 1887.

LL.15.4.10/14.

LEFÉBURE (MARCUS).

--- Le pouvoir d'action unilatérale de l'administration en droit anglais et  
français. Préface de J. Rivero. [Bibl. de Droit Pub. Tom. 35.]

Paris, 1961.

Law Lib.

LEFÉBURE (MAURICE JEAN PAUL).

--- continuator. See BONNE (C.). L'écorce cérébrale. 2e pte.

LE FÉBURE (SIMON).

--- Oeuvres complètes. 2 tom.

Maestricht, 1778.

O\*21.58-59.

ADDITIONS

LEFEBER (LOUIS).

--- and DATTA-CHAUDHURI (MRINAL).

--- Regional development; experiences and prospects in  
South and Southeast Asia ... [U.N. Res. Inst. for Soc.  
Development, Regional Planning, Vol. 1.]

Paris [1971.]

.3389(5):.91 Lef.

LEFEBURE (MOLLY).

--- Samuel Taylor Coleridge; a bondage of opium.

Lond., 1974.

.82172 Lef.

LEFÉBURE DE FOURCY (LOUIS).

--- Leçons d'algèbre.

Paris, 1833.

0.19.42.

--- Leçons de géométrie analytique, etc.

Paris, 1827.

Bound in Yx.8.25.

--- Traité de géométrie descriptive, précédé d'une introduction qui renferme la théorie du plan et de la ligne droite considérée dans l'espace. 2e éd. 2 tom. (in 1).

Paris, 1834.

0.19.29.

--- Trigonométrie rectiligne et sphérique.

Paris, 1830.

Bound in Yx.8.25.

LEFÉBURE DE SAINT ILDEFONT (RENÉ GUILLAUME).

--- Méthode familière pour guérir les maladies vénériennes.

Paris, 1773.

H.23.27/2.

LEFEBURE DE SAINT REMY (JEAN). See LEFÈVRE DE SAINT REMY.

LEFEBVRE (GEORGES).

--- The coming of the French Revolution. See below QUATRE-VINGT-NEUF.

--- Le Directoire. [Coll. Armand Colin. Sect. d'Hist. 245.]

Paris, 1946.

.9(44045) Lef.

--- The Directory. Tr. from the French by R. Baldick.

Lond., 1965.

.9(44045) Lef.

--- Another copy.

Hist. Lib.

--- Études sur la Révolution française.

Paris, 1954.

.9(4404) Lef.

[Continued overleaf.]

## ADDITIONS

### LEFEBVE (MAURICE JEAN).

- Jean Paulhan; Une philosophie et une pratique de l'expression et de la réflexion. 5e éd. [Coll. Les Essais, 33.] [Paris, 1949.] .84491 Pau. Lef.
- Structure du discours, de la poésie et du récit. [Coll. Lang.] Neuchâtel [1971.] .808 Lef.

### LEFEBVRE (E.).

- and BRUIJN (J.G. DE).
- eds. Martinus van Marum; life and work. Vol. 5. See FORBES (ROBERT JAMES).

### LEFEBVRE (GEORGES).

- Cherbourg à la fin de l'Ancien Régime et au début de la Révolution ... [Cahier des Annales de Normandie, No. 4.] Caen, 1965. .9(4421) Lef.
- Études orléanaises. 2 vols. [Comm. d'Hist. Econ. et Soc. de la Révolution, Mém. et Doc. 15.] Paris. .9(445)01 Lef.
1. Contribution à l'étude des structures sociales à la fin du XVIIIe siècle. 1962.
  3. Subsistances et maximum, 1789-an IV. 1963.
- Études sur la Révolution française. Introd. par A. Soboul. 2e éd., rev. Paris, 1963. .9(4404) Lef.

LEFEBVRE (GEORGES) [continued].

--- The French Revolution. See below *La révolution française*.

--- *La grande peur de 1789*.

Paris [1956.]

.9(44041) Lef.

--- [*La grande peur de 1789*.] The great fear of 1789; rural panic  
in revolutionary France. Tr. ... by J. White.

Lond., 1973.

.9(44041) Lef.

--- *Napoléon*. 3e éd. 10<sup>e</sup> mille. [*Peuples et Civilisations*, 14.]

Paris, 1947.

.9(4405) Lef.

--- Another copy.

Hist. Lib.

--- [*Napoléon*.] *Napoleon*. [Repr.] 2 vols.

Lond., 1974.

.9(4405) Lef.

1. From 18 Brumaire to Tilsit, 1799-1807. Tr. ... by  
H.F. Stockhold.

2. From Tilsit to Waterloo, 1807-1815. Tr. ... by J.E.  
Anderson.

--- Another ed. 3rd pr. Vol. 1.

New York, 1970.

Hist. Lib.

--- *Les paysans du nord pendant la Révolution Française*. [Th.,  
Paris Univ.]

Lille, 1924.

.9(44304) Lef.

--- *Quatre-vingt-neuf*. (Cent-cinquantième anniversaire de la  
*Révolution française*.)

Paris, 1939.

.9(44041) Lef.

--- Another copy.

Hist. Lib.

--- *The coming of the French Revolution*. Tr. by R.R. Palmer.

Princeton, 1947.

.9(44041) Lef.

[Continued overleaf.]

ADDITIONS

LEFEBVRE (GEORGES).

— [La grande peur de 1789.] The great fear of 1789; rural  
panic in revolutionary France. Introd. by G. Rude. Tr.  
by J. White. Repr.

Princeton [1982.]

.9(44041) Lef.

LEFEBVRE (GEORGES) [continued].

- 4th pr.            Princeton, 1967.            Science Stud. Lib.
- Another ed. 2nd ... pr. [Princeton Paperbacks, 100.]  
Princeton, 1969.            .9(44041) Lef.
- ed. Questions agraires au temps de la terreur; documents  
publiés et annotés par G.L. 2me éd. rev. et augmentée. [Min.  
de l'Instruction Pub. Coll. de Doc. Inédits sur l'Hist. Econ.  
de la Révolution Fr.]  
La Roche-sur-Yon, 1954.            .3381(4404) Lef.
- ~~joint ed. Recueil de documents relatifs aux séances des  
États Généraux, mai-juin, 1789. See PARIS. UNIVERSITY.  
INSTITUT DE L'HISTOIRE DE LA RÉVOLUTION FRANÇAISE.~~
- La révolution française. 3e éd., refondue. [Peuples et  
Civilisations, 13.]  
Paris, 1951.            .9(4404) Lef.
- Another copy.            Hist. Lib.
- The French Revolution. 2 vols.  
Lond.            .9(4404) Lef.
1. From its origins to 1793. Tr. from the French by  
E.M. Evanson.            1962.
2. From 1793 to 1799. Tr. from the French by J.H. Stewart  
and J. Friguglietti.            1964.

[Continued overleaf.]



ADDITIONS

LEFEBVRE (GEORGES).

— ed. Recueil de documents relatifs aux séances des États  
généraux ... 1789. See RECUEIL... Tom. 1.

LEFEBVRE (GEORGES) [continued].

- Another copy. Vol. 2. Hist. Lib.
- 2nd pr. Vol. 1.  
Lond., 1962. ~~R.R. (Hist.)~~  
*Hist. Lib.*
- ~~--- Another copy. Vol. 1. R.R. (Hist.)~~
- Another copy.*  
--- ~~Two other copies.~~ Vol. 1. Hist. Lib.
- Les thermidoriens. 2e éd. rev. et corr. [Coll. Armand Colin. Sect.  
d'Hist. et Sci. Econ. 196.]  
Paris, 1946. .9(44044) Lef.
- Les thermidoriens. 2e éd. rev. et corr. [Coll. Armand Colin. Sect.  
d'Hist. et Sci. Econ. 196.]  
Paris, 1946. Hist. Lib.
- The Thermidorians. Tr. from the French by R. Baldick.  
Lond., 1965. .9(44044) Lef.
- Another copy. Hist. Lib.
- See PETIT-DUTAILLIS (C.). Studies and notes supplementary to Stubbs'  
Constitutional history ... 3. By C.P.D. and G.L.

LEFEBVRE (GUSTAVE).

- Essai sur la médecine égyptienne de l'époque pharaonique.  
Paris, 1956. G.L. .61(32) Lef.

LEFEBVRE (HENRI).

- Critique de la vie quotidienne. 2 vols. [Le Sens de la Marche.]  
Paris. .301 Lef.
1. Introduction. 2e éd. [1958.]
2. Fondements d'une sociologie de la quotidienneté. [1961.]

LEFEBVRE (HENRI).

--- [Au-delà du structuralisme] L'idéologie structuraliste.  
[Coll. Points, 66.]

Paris, [1975.] .001018 Lef.

--- ed. Actualité de Fourier. See ACTUALITÉ ...

--- De l'État. Tom. 2-3. [Coll. 10/18.]

Paris. .3354 Lef.

2. De Hegel à Mao, par Staline; la théorie marxiste de  
l'État. [1976.]

3. Le mode de production étatique. [1977.]

LEFEBVRE (HENRI) [continued].

--- Diderot. [Grandes Figures.]

Paris [1949.]

.84459 Did. Lef.

--- L'existentialisme.

Paris, pr. 1946.

.1499 Lef.

--- L'irruption de Nanterre au sommet. [Sociol. et Révolution.]

Paris [1968.]

.3232(44083) Lef.

--- Le langage et la société. [Coll. Idées, 99.]

[Paris, 1966.]

.401:.3' Lef.

--- Another copy.

Appl. Ling. Lib.

--- Le Marxisme. [Que Sais-Je? 300.]

Paris, 1948.

.3354 Lef.

--- Problèmes actuels du marxisme. 3e ed. [Initiation Philos. 32.]

Paris, 1963.

.3354 Lef.

LEFEBVRE (LOUIS).

--- Une grande figure du symbolisme: Charles Morice; le poète et l'homme.  
D'après des documents et des manuscrits inédits.

Paris, 1926.

.84189 Mor. Lef.

LE FEBVRE (LOUIS CHANTEREAU).

--- Traité des fiefs et de leur origine ... Des capitulaires de Charlemagne,  
etc.

Paris, 1662.

E\*17.2.

~~LEFEBVRE (M.J.).~~

~~--- Jean Paulhan. Une philosophie et une pratique de l'expression et de la  
réflexion. 5e éd. [Coll. Les Essais, 33.]~~

~~[Paris, 1949.]~~

~~.84891 Lef.~~

ADDITIONS

LEFEBVRE (HENRI).

— [L'irruption de Nanterre au sommet.] The explosion;  
Marxism and the French revolution. Tr. ... by A. Ehrenfeld.  
New York [1969.] Politics Lib.

— Musset; essai. 2<sup>e</sup> éd., rev. et corr. [Trav. 6.]  
Paris [1970.] .84177 Lef.

— Marx. 3e éd. [S.U.P. Philosophes.] <sup>Mar.</sup>  
Paris, 1972. .3354<sub>A</sub> Lef.

— [Sociologie de Marx.] The sociology of Marx. Tr. ... by  
N. Guterman. Repr.  
Lond., 1971. ~~.33542:301 Lef.~~  
.3354:301 Lef.

— [La survie du capitalisme.] The survival of capitalism;  
reproduction of the relations of production. Tr. by  
F. Bryant. [Motive Ser.]  
Lond., 1976. .3354:33015 Lef.

LEFEBVRE (JACQUES).

— See LEFEBVRE (ROGER) and L.(J.)

LE FEBVRE (NICOLAS). See LE FEVRE.

LEFEBVRE (R.).

--- See DAUDEL (RAYMOND), L. (R.) and MOSER (C.)

LEFEBVRE (THEODORE MARY THEODORE).

--- Les âges des métaux et le Finistère jusqu' aux temps proto-historiques  
(bronze et fer): druidisme.

Morlaix, 1900.

L.A.B. P .571(4411) Lef.

\*\*\* Lord Abercromby Bequest.

LEFEBVRE (THEOPHILE).

--- Voyage en Abyssinie pendant les années 1839-1843, par une commission  
scientifique composée de ... T.L. ... A. Petit et Quartin-Dillon, etc.  
Tom. 1-5.

Paris [1845-54.]

F\*16/1.72-76.

*\*\*\* Tom. 6 wanting.*

1-2. Relation historique, par ... T.L.

3. Itineraire ... par ... T.L.

4-5. Histoire naturelle. Botanique. Par ... A. Richard.

--- Atlas. Tom. 1-2.

EE.4.52-53.

*\*\*\* Tom. 3 wanting.*

~~LE FEBVRE (YVES).~~

~~--- Le Génie du Christianisme (de Chateaubriand.) [Les grands événements  
lit., sér. 2.]~~

~~Paris, 1929.~~

~~R.R. (French)~~

LEFEBVRE DES NOËTTES (RICHARD JOSEPH EDOUARD CHARLES).

--- L'attelage. Le cheval de selle à travers les âges. Contribution à  
l'histoire de l'esclavage. Préface de J. Carcopino. 2 vols.

Paris, 1931.

~~798609 Lef.~~

*636107 Lef.*

LEFEBVRE LABOULAYE. See LABOULAYE.

LEFEBVRE (RENÉ). See LABOULAYE (ÉDOUARD RENÉ LEFEBVRE).

LEFEBVRE (ROGER).

— and LEFEBVRE (JACQUES).

— Les assemblées générales d'actionnaires dans les sociétés anonymes; nouveau régime.

Paris, 1968.

C.E.G.S.

LE FEBVRE (YVES).

— Le Génie du Christianisme (de Chateaubriand). [Les Grands Événements Lit. Sér. 2.]

Paris, 1929.

.84365 Le F.

LEFEBVRE DE CHEVERUS (JEAN LOUIS ANNE MADELINE) Card.

— See HAMON (ANDRE JEAN MARIE). Vie du Cardinal de Cheverus ...

LEFEBVRE-SAINTE-MARIE (G.).

--- ed. See CONCOURS D'ANIMAUX ...

LEFEBVRE-TEILLARD (Mrs. ANNE).

--- La population de Dole au XVIIIe siècle; étude d'histoire économique et sociale. Préface de J. Gaudemet. [Paris, Univ. Fac. de Droit et des Sci. Econ. Trav. et Recherches, Ser. Sci. Hist., No. 19.]

Paris, 1969.

.30132(4445) Lef.

LE FERME (HARRY PAUL).

--- V.R.P. représentation commerciale. [Voici Vos Droits, 1.]

Paris, n.d.

Law Lib.

LEFETZ (M.).

--- See BINOIS (R.) and L. (M.)

LE FEUVRE (AMY).

--- Bettina. Versione italiana di A. Turner.

Firenze, 1912.

Bo.6.60.

LEFEVER (ERNEST WARREN).

--- Crisis in the Congo; a United Nations force in action. [Stud. of U.S. Policy and the U.N.]

Washington, D.C., 1965.

Law Lib.

--- Nuclear arms in the Third World; U.S. policy dilemma.

Washington [1979.]

.341672(5-8) Lef.

--- Another copy.

Science Stud. Lib.

--- Spear and scepter; army, police, and politics in tropical Africa. [Brookings Inst. Publ.]

Washington [1970.]

C.A.S.

[Continued overleaf.]



LEFEVER (ERNEST WARREN) [continued].

--- Uncertain mandate; politics of the U.N. Congo operation.  
Baltimore [1967.] C.A.S.

--- Another copy. Law Lib.

--- and GODSON (ROY).

--- The CIA and the American ethic; an unfinished debate.  
Washington, D.C. [1979.] .355343(73) Lef.

LEFEVER (HENRY).

--- The Vedic idea of sin.  
Nagercoil, 1935. Keith Coll.0.13.

\*\*\* Berriedale Keith Collection.

--- Another copy. Keith Coll.0.14.

\*\*\* Berriedale Keith Collection.

--- See BEYERHAUS (PETER) and L. (H.)

LEFEVERE (ANDRÉ).

--- Literary knowledge; a polemical and programmatic essay on its  
nature, growth, relevance and transmission.  
Assen, 1977. .801 Lef.

--- Translating poetry; seven strategies and a blueprint.  
[Approaches to Translation Stud. 3.]  
Assen, 1975. .8081 Lef.

LE FEVOUR (EDWARD).

--- Western enterprise in late Ch'ing China; a selective survey of  
Jardine, Matheson and Company's operations, 1842-1895.  
[Harvard East Asian Mon. 26.]  
Cambridge, Mass., 1968. .382(5103:42) Lef.

LEFEVRE, pseud. See BARNETT (F.)

LEFEVRE (Mrs. - ).

--- An extract of letters by Mrs. L\*\*\*.

Bristol, 1773.

E.B. .2484 Lef.

LEFÈVRE (ANDRÉ).

--- Sous le Second Empire; chemins de fer et politique.

Paris, 1951.

.3851(4028) Lef.

LEFÈVRE (ANDRÉ PAUL ÉMILE).

--- La Grèce antique: entretiens sur les origines et les croyances.  
Paris, 1900. Zt.11.87.

--- L'Italie antique (origines et croyances). [École d'anthropologie.]  
Paris, 1905[04]. Zq.11.80.

--- Philosophy historical and critical. Tr. with an introduction by A.H.  
Keane. [Lib. of Contemp. Sci.]  
Lond., 1879. N\*13.47.

--- Race and language. [Int. Sci. Ser. 66.]  
Lond., 1894. O.S. .401 Lef.

LEFÈVRE (ANNE). See DACIER (A. LEFÈVRE, afterwards Mme).

LEFEVRE (CARL ANTHONY).

--- Linguistics and the teaching of reading. [McGraw-Hill Ser. in Educ.  
Curriculum and Methods in Educ.]  
New York [1964.] Appl. Ling. Lib.

--- Another copy. Appl. Ling. Lib.

LEFÈVRE (F.).

--- ed. See PREMONSTRATENSISANS. LES STATUTS DE PREMONTRÉ.

LEFÈVRE (FRÉDÉRIC).

--- Entretiens avec Paul Valéry. Précédés d'une préface de H. Bremond.  
[Essais et Curiosités Litt.]  
Paris, 1926. .84191 Val. Lef.

LEFEVRE (Right Hon. GEORGE JOHN SHAW-) 1st Baron Eversley. See SHAW-LEFEVRE.

LEFEVRE (Sir GEORGE WILLIAM).

--- An apology for the nerves; or, their influence and importance in health  
and disease.  
Lond., 1844. \*G.30.9.

[Continued overleaf.]

LEFEVRE (ECKARD).

--- Propertius Ludibundus; Elemente des Humors in  
seinen Elegien. [Bibl. d. Klass. Altertumswiss.  
N.F. 2. Rhe. Bd. 15.]

Heidelberg, 1966.

.8744 Lef.

--- Senecas Tragödien. [Wege d. Forsch., Bd. 310.]

Darmstadt, 1972.

.8726 Lef.

--- Der Phormio des Terenz und der Epidikazomenos des  
Apollodor von Karystos. [Zetemata, Hft. 74.]

München [1978.]

.8725 Lef.

LEFEVRE (Sir GEORGE WILLIAM) [continued].

[---] The life of a travelling physician, from his first introduction to practice; including twenty years' wanderings through the greater part of Europe. [Anon.] 3 vols.

Lond., 1843.

F.15/1.76-79.

--- Observations on the nature and treatment of the cholera morbus, now prevailing epidemically in St. Petersburg.

Lond., 1831.

G.16.71/3.

--- Thermal comfort; or popular hints for preservation from colds, coughs and consumption. 2nd ed.

Lond., 1844.

G\*13.2.

LEFEVRE (H.).

--- Traité des valeurs mobilières et des opérations de bourse. Placement et spéculation.

Paris, 1870.

~~So.10.116/4.~~  
X coll. 3136

LE FEVRE (ISAAC).

--- An historical account of the sufferings and death of the faithful confessor and martyr, M.I. le F., an advocate of Parliament who ... died a slave in the French King's galleys ... Done into English from the French. To which is prefix'd a preface by the editor.

Lond., 1704.

\*S.22.25.

LEFEVRE (JACQUELINE).

--- See BLOCH (ROGER) and L. (J.)

LE FEVRE (JACQUES) d'Étaples. See FABER (JACOBUS) Stapulensis.

LEFEVRE (JEAN) Seigneur de St. Remy. See LEFEVRE DE SAINT-REMY.

LEFEVRE (JOSEPH) Writer of Précis.

--- Correspondance de Philippe II sur les affaires des Pays-Bas, 2e pte, etc. See PHILIP II, King of Spain.

ADDITIONS

LE FEVRE (JEAN).

— Le respit de la mort. Publ. par G. Hasenohr-Esmos.  
[Soc. des Anc. Textes Fr. Publ.]

Paris, 1969.

.8406 Soc.

LEFÈVRE (JULIEN).

- La liquéfaction des gaz et ses applications. [Encyc. sci. des aide-mém.,  
Sect. de l'Ingén.] Paris, [1899.] Zf.8.41.

LEFEVRE (MARGUERITE A.).

- La Basse - Meuse; étude de morphologie fluviale. [Soc. Belge d'Étud.  
Géog. Mém. No. 1.] Louvain, 1935. .55148(493) Lef.  
\*\*\* Ogilvie Bequest.

- Principes et problèmes de géographie humaine.  
Bruxelles (1945.) .91 Lef.

LE FÈVRE (NICOLAS).

- Traicté de la chymie. 2 tom.  
Paris, 1660. I\*33.47-48.
- Seconde éd. ... augm., etc. 2 tom. (in 1).  
Paris, 1669. I\*23.14.
- Cours de chymie, etc. 5e éd., revue ... & augmentée ... par M. Du  
Monstier. 5 tom. Paris, 1751. I\*23.15-19.
- A compleat body of chymistry ... By Nicasius le Febure ... Rendred into  
English, by P.D.C. ... Corrected and amended, etc. 2 pts. (in 1).  
Lond., 1670. I\*21.31.

LEFEVRE (P.C.).

- See LEBRUN (JEAN) and L. (P.C.)

LEFEVRE (PAUL G.).

- Active transport through animal cell membranes. [Heilbrunn and Weber,  
Protoplasmatologia, Bd. 8, 7a.] Wien, 1955. Mol. Biol. Lib.
- Another copy. Zool. Lib.

LEFEVRE (RAOUL).

- [---] The destruction of Troy, in three books, etc. [Anon.] 7th ed., corr. and much amended. 3 pts. (in 1).  
Lond., 1663. ~~HL.118.6.24.~~  
JA 1185
- 11th ed. corr., etc.  
Lond., 1684. Dd.9.78.
- 13th ed., corr. and much amended.  
Lond., 1708. E.B. .84329 LeF.
- The history of Jason. Tr. ... by W. Caxton c. 1477. Ed. by J. Munro. Vol. 1. [E.E.T.S. Extra Ser. 111.]  
Lond., 1913. RL.
- The recuyell of the historyes of Troye ... Tr. and printed by W. Caxton ... reproduced with ... introduction ... and ... facsimiles by H.O. Sommer. 2 vols.  
Lond., 1894. Bn.2.57<sup>1-2</sup>.
- Stair Ercuil ocus a bás. The life and death of Hercules. Edited and translated with notes, glossary, etc. by G. Quin. [Irish and Eng.] [Irish Texts Soc. 38, 1936.]  
Dublin, 1939. RH.2.
- LE FÈVRE (RAYMOND JAMES WOOD).
- Dipole moments; their measurement and application in chemistry. [Methuen's Mon. on Physical Subjects.]  
Lond., 1938. Chem. Lib.
- Another copy. Chem. Lib.
- 2nd ed., rev. and reset. [Methuen's Mon. on Phys. Subjects.]  
Lond., 1948. Chem. Lib.
- Another copy. Nat. Phil. Lib.
- 3rd ed., rev. and reset. [Methuen's Mon. on Phys. Subjects.]  
Lond., 1953. Chem. Lib.



ADDITIONS

LEFEVRE (RAOUL).

--- The recuyell of the historyes of Troye. [Tr. from the French by William Caxton. A reprint of the edition of 1471.]  
2 vols.

Kelmscott Press, Hammersmith, 1892.

JY 614-615.

LEFEVRE (RENATO).

--- Il palazzo degli Aldobrandini e dei Chigi a piazza Colonna.  
[Quaderni di Stor. dell' Arte, 14.]

[Rome, 1964.]

.72882(45632) Lef.

--- Villa Madama. [A brief description.]

Roma, n.d.

.72884(45632) Lef.

--- Villa Madama.

Roma [1973.]

F .72884(45632) Lef.

\*\*\* A different work from the preceding.

LEFÈVRE (ROGER).

--- La bataille du "Cogito". [Bibl. de Philos. Contemp. Hist. de la  
Philos. et Philos. Gén.] Paris, 1960. .1941 Lef.

--- Condillac, ou, la joie de vivre. Présentation, choix de textes,  
bibliographie par R.L. [Philos. de Tous les Temps, 26.]  
[Paris, 1966.] .1943 Lef.

--- Le criticisme de Descartes. [Bibl. de Philos. Contemp.]  
Paris, 1958. .1941 Lef.

--- L'humanisme de Descartes. [Bibl. de Philos. Contemp. Hist. de la  
Philos. et Philos. Gén.] Paris, 1957. .1941 Lef.

--- Another copy. French Lib.

--- Le métaphysique de Descartes. [Initiation Philos. 42.]  
Paris, 1959. French Lib.

--- La vocation de Descartes. [Bibl. de Philos. Contemp.]  
Paris, 1956. .1941 Lef.

--- Another copy. French Lib.

LE FÈVRE (TANNEGUI). See FABER (TANAQUIL).

LEFÈVRE (THÉO).

--- [Wetenschap vandaag voor de maatschappij van morgen.] La science  
d'aujourd'hui pour la société de demain. Tr. du néerlandais  
par M. Buisse. Bruxelles [1971.] C.E.G.S.

LEFÈVRE (YVES).

--- L'Elucidarium et les lucidaires; contribution, par l'histoire d'un  
texte, à l'histoire des croyances religieuses en France au moyen âge.  
[Bibl. des Ecoles Fr. d'Athènes et de Rome, Fasc. 180.]

Paris, 1954.

.1894 Hon. Lef.

--- ed. Manuel d'ancien français. Vol. 3.

Bordeaux.

.447(01) Lef.

3. Syntaxe. Par P. Ménard.

[1968.]

--- Two other copies.

French Lib.

--- ed. Manuel du français du moyen âge. Vol. 1.

Bordeaux.

.447(01) Man.

1. Syntaxe de l'ancien français. Par P. Ménard. Nouv. éd.  
entièrement refondue. [1973.]

\*\*\* For original ed. see LEFÈVRE (YVES) ed. Manuel  
d'ancien français. Vol. 3.

--- Vols. 2-3ff.

Bordeaux.

French Lib.

2. Syntaxe du moyen français. Par R. Martin et M. Wilmet.

1980.

3. Systèmes morphologiques de l'ancien français.  
verbe. Par N. Andrieux et E. Baumgartner.

A. / A. Le  
[1983.]

LE FÈVRE DE LA BODERIE (GUY).

--- See SECRET (FRANÇOIS). L'ésotérisme de G. Le F. de la B.

LEFÈVRE DE LA PLANCHE (N.).

--- Mémoires sur les matières domaniales, ou traité du domaine. 3 tom.  
Paris, 1764-65. Law Lib.

LE FÈVRE DE MORSAN ( - ).

--- Des moeurs et des usages des Romains. [Anon.] [Revised and  
corrected by F. Granet.] Nouv. ed. ... 2 tom.  
Paris, 1744. E.B. .9(37)01 LeF.

--- Another copy. \*Q.19.58-59.

LEFÈVRE DE SAINT-REMY (JEAN).

\*\*\* For the 'Histoire du ... chevalier ... J. de Lalain,' by Lefèvre,  
wrongly ascribed to G. Chastellain, see CHASTELLAIN (G.)

--- Mémoires de J.L. See MONSTRELET (E. DE). Chroniques. Supplément.

LEFÈVRE D'ORMESSON. See ORMESSON.

LEFEVRE GALLERIES, London. See REID (ALEX.) & LEFEVRE, LTD.

LEFEVRE GALLERY, London.

--- The complete sculptures of Degas ... [Catalogue of an exhibition  
...] See DEGAS (EDGAR HILAIRE GERMAIN). EXHIBITION CATALOGUES. The  
complete sculptures ...

LEFF (GORDON).

--- Bradwardine and the Pelagians; a study of his De causa Dei and its  
opponents. [Camb. Stud. in Mediev. Life and Thought, N.S. Vol. 5.]  
Cambridge, 1957. .2735 Bra. Lef.

[Continued overleaf.]

LEFF (GORDON) [continued].

- Another copy. New Coll. Lib.
- The dissolution of the medieval outlook; an essay on intellectual and spiritual change in the fourteenth century. [Harper Torchbooks.]  
New York, 1976. .189 Lef.
- Gregory of Rimini; tradition and innovation in fourteenth century thought.  
Manchester [1961.] .189 $\frac{1}{4}$  Gre. Lef.
- Another copy. New Coll. Lib.
- Heresy in the later Middle Ages; the relation of heterodoxy to dissent, c.1250 - c.1450. 2 vols.  
Manchester [1967.] .273(4017) Lef.
- Another copy. Hist. Lib.
- Another copy. New Coll. Lib.
- History and social theory.  
Lond., 1969. .901:.3 Lef.
- Medieval thought; St. Augustine to Ockham. [Pelican Bks. A424.]  
Harmondsworth, 1958. .189 Lef.
- Repr.  
Harmondsworth, 1962. .189 Lef.
- Another ed. Repr.  
Chicago, 1959. New Coll. Lib.

[Continued overleaf.]

LEFF (GORDON) [continued].

--- Paris and Oxford universities in the thirteenth and fourteenth centuries:  
an institutional and intellectual history. [New Dimensions in Hist.]  
New York [1968.] .378(4436:4257)09 Lef.

--- Another copy. .378(4436:4257)09 Lef.

--- Another copy. Hist. Lib.

--- Richard Fitzralph, commentator of the Sentences; a study in theological  
orthodoxy.

Manchester [1963.] New Coll. Lib.

--- The tyranny of concepts; a critique of Marxism. 2nd ed.  
Lond., 1969. .3354 Lef.

--- William of Ockham; the metamorphosis of scholastic discourse. Repr.  
Manchester, 1977. .1894 Ock. Lef.

LEFF (JULIAN PAUL).

--- Psychiatry around the globe. [Exper. and Clinical Psychiatry,  
Vol. 5.]  
New York, 1981. Psychiatry Lib.

--- See HIRSCH (STEVEN RICHARD) and L. (J.P.)

--- and ISAACS (A.D.).

--- Psychiatric examination in clinical practice.  
Oxford, 1978. Psychiatry Lib.

ADDITIONS

LEFF (JULIAN PAUL).

— Psychiatry around the globe; a transcultural view.  
[Experimental and Clinical Psychiatry, Vol. 5.]  
New York [1981.] .61689 Lef.

LEFF (NATHANIEL H.).

— Underdevelopment and development in Brazil.  
2 vols.  
Lond., 1982. .3389(81) Lef.

1. Economic structure and change, 1822-1947.
2. Reassessing the obstacles to economic development.



LEFF (SAMUEL).

--- The health of the people.

Lond., 1950.

M.R.R.

--- Another copy.

Soc. Med. Lib.

--- Recent outbreaks of infectious diseases.

Lond., 1957.

Soc. Med. Lib.

--- Social medicine. [Survey of Human Biol. No. 1.]

Lond., 1953.

G.L. .614 Lef.

--- Another copy.

*.614 Lef.*  
~~G.L. .614.3 Bar.~~

--- Another copy.

G.L. .614 Lef.

--- Another copy.

*.614 Lef.*  
~~Soc. Admin. Lib.~~

~~--- Another copy. Soc. Med. Lib.~~

--- and LEFF (VERA).

~~The school health service.~~

~~Lond., 1959.~~

~~Soc. Med. Lib.~~

--- The search for sanity. [The Commonwealth and Int. Lib. 322.]

Oxford, 1965.

Soc. Admin. Lib.

LEFF (VERA).

--- See LEFF (SAMUEL) and L. (V.)

LEFFINGWELL (ALBERT TRACY).

--- Illegitimacy and the influence of seasons upon conduct. Two studies in democracy. [Soc. Sci. Ser. 49.]

Lond., 1892.

O.S. .301427 Lef.

## ADDITIONS

LEFF (NATHANIEL H.).

— The Brazilian capital goods industry, 1929-1964.  
Cambridge, Mass., 1968. .33847621 Lef.

LEFFELAAR (HENDRIK L.).

--- Through a harsh dawn; a boy grows up in a Japanese prison  
camp.  
Lond., 1964. .9(40547252) Lef.

LEFFELMAN (LOUIS JACK).

--- and HAWLEY (RALPH CHIPMAN).

--- Studies of Connecticut hardwoods. The treatment of advance  
growth arising as a result of thinnings and shelterwood  
cuttings. [Yale Univ. Sch. of Forestry, Bull. No. 15.]  
New Haven, 1925. Forestry Lib.

LEFFINGWELL (THOMAS P.).

--- See MELVILLE (GEORGE S.) and L. (T.P.)

LEFFINGWELL (WILLIAM HENRY).

--- and ROBINSON (EDWIN MARSHALL).

--- Textbook of office management. 2nd ed., 5th impr.

New York, 1943.

.651 Lef.

LEFFLER (ANNA CARLOTTA) afterwards EDGREN, afterwards Duchessa di Cajanello.

--- Sonia Kovalevsky: biography and autobiography. I. Memoir, by A.C.L. (Edgren), Duchessa di Cajanello. II. Reminiscences of childhood [entitled, 'Life in Russia: the Sisters Rajevski'] written by herself. Tr. into English by L. von Cossel.

Lond., 1895.

Zr.11.65.

--- Sonya Kovalevsky: a biography by A.C.L., Duchess of Cajanello; and Sisters Rajevsky, being an account of her [own] life [and of that of her sister] by Sonya Kovalevsky. Tr. by A. de Furuhjelm and A.M.C. Bayley. With a biographical note by L. Wolffsohn. Authorized ed.

Lond., 1895.

Zr.5.58.

--- Ur lifvet. 3e samlingen. Hfb. 1.

Stockholm.

O.S. .8397369 Lef.

1. Kvinglighet och erotik. Gusten får pastoratet.

1883.

LEFFLER (JOHN EDWARD).

--- The reactive intermediates of organic chemistry.

New York, 1956.

Chem. Lib.

LEFFLER (KARL PETER).

--- Om nyckelharpospelet på Skansen. Anteckningar af K.P.L. [Bidrag till Vår Odlings Häfder, 6.]

Stockholm, 1899.

Scott. Stud. Lib.

LEFFMANN (HENRY).

--- and BEAM (WILLIAM).

--- Analysis of milk and milk products.

Lond., 1893.

\*E.15/1.27.

ADDITIONS

LEFFLER (MELVYN P.).

--- The elusive quest; America's pursuit of European  
stability and French security, 1919-1933.

Chapel Hill [1979.] .327(73) Lef.

LEFFORD (ARTHUR).

--- See BIRCH (HERBERT G.) and L. (A.)

LEFKANDI. 1. [Brit. Sch. of Archaeol. at Athens, Suppl.  
Vol. 11.]

[Lond.] .913(384) Lef.

1. The Iron Age. The settlement, ed. by  
M.R. Popham and L.H. Sackett, and, with  
P.G. Themelis, The cemeteries. Text  
(And Plates). 2 vols. 1980, 1979.

LEFKOVITZ (DAVID).

- Data management for on-line systems.  
Rochelle Park, N.J. [1974.] JCM Lib.
- File structures for on-line systems.  
New York [1969.] JCM Lib.
- Another copy. JCM Lib.

LEFKOWITZ (MARY R.).

- Heroines and hysterics.  
Lond., 1981. .396(38) Lef.
- The victory ode; an introduction. [A study of selected poems  
by Pindar and Bacchylides.] [Noyes Class. Stud.]  
Park Ridge, N.J. [1976.] .8845 Lef.
- Another copy. Classical Lib.

--- and FANT (MAUREEN B.).

- eds. Women's life in Greece and Rome. (A source book in  
translation.)  
Lond., 1982. .396(37-38) Lef.

LEFKOWITZ (MURRAY).

- William Lawes. [Stud. in the Hist. of Music.]  
Lond., 1960. .7800711 Law.Lef.
- Another copy. Reid Music Lib.

LEFKOWITZ (R. J.).

- ed. Receptor regulation. [Receptors and Recognition, Ser.  
B, Vol. 13.]  
Lond., 1981. Botany Lib.

ADDITIONS

LEFKOWITZ (MARY R.).

— The lives of the Greek poets. [Class. Life and  
Letters; Paperduck.]

Lond., 1981.

.881092 Lef.

LEFLAR (ROBERT ALLEN).

--- The law of conflict of laws.

Indianapolis [1959.]

Law Lib.

LE FLEMING (STANLEY HUGHES).

--- The manuscripts of S.H. Le F. Esq., of Rydal Hall. [Hist.  
MSS. Comm. Rep. 12, app. pt. 7.]

Lond., 1890.

Ref. Hist. Q.

LEFLER (HUGH TALMAGE).

--- A guide to the study and reading of North Carolina history.

Chapel Hill [1955.]

.9(756)016 Lef.

--- ed. A plea for federal union ... See IREDELL (JAMES).

--- See BARCK (OSCAR THEODORE) and L. (H. T.)

--- and NEWSOME (ALBERT RAY).

--- The history of a Southern state; North Carolina.

Chapel Hill [1954.]

.9(756) Lef.

--- and POWELL (WILLIAM STEVENS).

--- Colonial North Carolina; a history. [A Hist. of the Amer.  
Colonies.]

New York [1973.]

.9(75601-02) Lef.

LEFLON (JEAN).

--- La crise révolutionnaire, 1789-1846. [Fliche and Martin. Hist. de  
l'Eglise, 20.] [Paris] 1949. .28209 Fli.

--- Another copy. Hist. Lib.

--- Pie VII. Vol. 1. Paris. .26213(4027) Piu. Lef.

1. Des abbayes bénédictines à la Papauté. [1958.]



LEFMANN (SALOMON).

--- Ueber deutsche Rechtschreibung. [Virchow and Holtzendorff-Vietmamsdorf, Samml. vi, 129.]

Berlin, 1871.

Zv.5.

--- ed. and tr. See LALITA VISTARA.

LEFORESTIER (ÉMILIE).

--- See LÉCONTE DE LISLE (CHARLES MARIE). La dernière illusion de Leconte de Lisle; lettres inédites à E.L.

LE FORT (CHARLES).

--- Essai historique sur la tutelle en droit romain.

Genève, 1850.

QP. 1219/7.

LEFORT (FRANÇOIS) General.

--- See BASSVILLE (N.J.H. DE). Précis historique sur la vie ... de F. le Fort.

LEFORT (G.).

--- [Algebre et analyse.] Algebra and analysis; problems and solutions. Tr. by Scripta Technica, Inc. Translation editor: B.R. Gelbaum.

Amsterdam, 1966.

Math. Lib.

LE FORT (GERTRUD VON).

--- Aufzeichnungen und Erinnerungen.

[Zürich?] copyright 1931.

.83391 Le F.

--- Die Frau des Pilatus. Novelle.

Wiesbaden, 1955.

.83391 Le F.

--- Das Gericht des Meeres; Erzählung.

Zürich, 1948.

.83391 Le F.

--- Die Magdeburgische Hochzeit. (14. bis 20. Tausend.)

Leipzig, 1938.

.83391 Le F.

--- See JAPPE (H.). Gertrud von Le Fort.

## ADDITIONS

LEFOLII (KEN).

--- The Canadian look; a century of sights and styles.  
[Canadian Centennial Lib.]

[Toronto, 1965.] F .9(71)01 Lef.

--- writer of text. Great Canadian painting; a century  
of art. See GREAT Canadian painting ...

LEFOLII (HANS HENRIK).

--- tr. See NJÁLS SAGA. Nials Saga ...

LEFORT (CLAUDE).

--- Éléments d'une critique de la bureaucratie. [Trav.  
de Droit, d'Écon., de Sociol. et de Sci. Pol. No. 85.]

Genève, 1971. .32164204 Lef.

--- Le travail de l'oeuvre Machiavel. [Bibl. de Philos.]  
[Paris, 1972.] .85431 Lef.

LEFORT (JACQUES).

--- ed. Actes d'Esphignénou. See MOUNT ATHOS. Archives de  
l'Athos. 6.

LEFORT (JOSEPH).

--- La condition de la propriété dans le nord de la France. Le droit de  
marché. Paris, 1892. Law Lib.

--- De l'enseignement économique dans les facultés de droit. [Jour.  
des Econ. 15 fév. 1874.]

~~Zp. 3.4/1.~~  
X Coll. 3359

--- Des rapports de l'économie politique avec le droit civil. 2 pts.  
[Assoc. Fran. pour l'Avancement des Sci., Comp. Rend. 1874-75.]

Paris.

~~Zp. 3.3/9-10.~~  
X Coll. 3358<sup>9-10</sup>

LEFORT (L. TH.).

--- comp. Concordance du Nouveau Testament sahidique. Pt. 1. Les mots  
d'origine grecque. See BIBLE. NEW TESTAMENT. CONCORDANCES.

--- ed. and tr. Les Pères apostoliques en copte, etc. See APOSTOLIC  
FATHERS.

--- ed. and tr. S. Pachomii vita Bohairice scripta. See Pachomius, St.

--- ed. S. Pachomii vitae Sahidice scriptae. See PACHOMIUS, St.

LE FORT (LÉON).

--- Des maternités. Étude sur les maternités ... dans les principaux  
états de l'Europe, etc. Paris, 1866. Att.2.8.5.

LE FOULON (—).

--- Essai sur les fièvres adynamiques en général ... avec une notice sur  
la fièvre jaune. Paris, 1808. \*H.29.26.

LEFOUR (JOSEPH RAOUL).

--- Des fibromes utérins au point de vue de la grossesse et de  
l'accouchement. [Th.] Paris, 1880. H\* 19.6/2.

ADDITIONS

LEFORT (RENÉ).

— [Ethiopia; la révolution hérétique.] Ethiopia; an heretical  
revolution? Tr. by A.M. Bennett.

Lond., 1983.

.3232(6306) Lef.

LEFRANC (ABEL).

--- joint-author. Le Collège de France (1530-1930). Livre jubilaire ...  
See FRANCE. COLLEGE DE FRANCE.

--- Histoire de la ville de Noyon et de ses institutions jusqu'à la  
fin du XIIIe siècle. [Bibl. de l'École des Hautes Étud. Sci. Hist.  
et Philol. Fasc. 75.] Paris, 1887. O.S. .9(4435) Lef.

--- La jeunesse de Calvin. Paris, 1888. \*R.7.92.

--- Les lettres et les idées depuis la Renaissance. Tom. 2-3.  
Paris. ~~.8404 Lef.~~

2. Grands écrivains français de la Renaissance; le Roman  
d'amour de C. Marot, le platonisme et la littérature en  
France, Marguerite de Navarre, etc. 1914. D  
.8404 Lef.

3. Œuvres inédits de A. Chénier. Publiées d'après les  
manuscrits originaux par A.L. 1914.  
.84156

--- Rabelais; études sur Gargantua, Pantagruel, le Tiers livre. Avant-  
propos de R. Marichal. 2e mille. [Les Clés de l'Œuvre Immortelle.]  
[Paris] copyright 1953. .84732 Lef.

~~3e mille.~~  
--- ~~Another copy~~ [Paris] ~~copyright 1953.~~ R.R. (French).

--- Sous le masque de 'William Shakespeare' William Stanley vi<sup>e</sup> comte  
de Derby. 2 tom. Paris, 1918. .82233 Lef.

--- La vie quotidienne au temps de la Renaissance. ["La vie quotidienne".]  
[Paris, 1938.] ~~.3(4402) Lef.~~  
.9(4402)01 Lef.

LEFRANC (F.). See LHOMME (M.F.) pseud.

LEFRANC (GEORGES).

--- Les expériences syndicales en France de 1939 à 1950. [Hist. du  
Travail et de la Vie Econ.] Paris [1950.] .33188(44081-082) Lef.

[Continued overleaf.]

## ADDITIONS

LEFRANC (ABEL).

— À la découverte de Shakespeare.

Paris [1945.]

.82233 Lef.

LEFRANC (GEORGES).

--- Grèves d'hier et d'aujourd'hui. [Hist. du Travail et de la Vie Économique.]

Paris [1970.]

.331892 Lef.

--- Les gauches en France, 1789-1972. [Coll. "Le Regard de l'Hist."]

Paris, 1973.

C.E.G.S.

--- Essais sur les problèmes socialistes et syndicaux. [Petite Bibl. Payot, 160.]

Paris [1970.]

C.E.G.S.

LEFRANC (GEORGES) [continued].

--- Histoire du Front Populaire, 1934-1938. [Étud. et Doc. Payot,  
Sér. Hist.] Paris, 1965. .329(4408) Lef.

--- Jaurès et le socialisme des intellectuels. [Hist. du Travail et de la  
Vie Econ.] Paris [1968.] ~~.33509 Jaur. Lef.~~  
.335(4408) Lef.

--- Another copy. French Lib.

--- Le mouvement socialiste sous la Troisième République, 1875-1940.  
[Bibl. Hist.] 2 copies. Paris, 1963. ~~.335~~  
29(4408) Lef.

--- Le mouvement syndical de la libération aux événements de mai-juin  
1968. [Bibl. Hist.] Paris, 1969. .33188(44082-083) Lef.

--- Le syndicalisme dans le monde. [Que Sais-Je? 356.]  
Paris, 1949. .33188 Lef.

LEFRANC (PIERRE).

--- Sir Walter Raleigh, écrivain; l'œuvre et les idées.  
Paris, 1968. .8283 Ral. Lef.

LEFRANC (ROBERT).

--- ed. Les techniques audio-visuelles au service de l'enseignement.  
Sous la direction de R.L. Ce cahier a été rédigé par H. Canac, H.  
Dieuzeide ... Preface de L. Cros. Avant-propos de R. Vettier.  
[Cahiers de Pédagogie Mod.]  
Paris, 1961. Appl. Ling. Lib.

--- The use of short 8mm. films in European schools. [Counc. for Cult.  
Co-operation of the Counc. of Europe, Educ. in Europe, Sect. 4, No.8.]  
Strasbourg, 1967. .37133523(4) Lef.

LEFRANC DE POMPIGNON (JEAN JACQUES) Marquis.

--- Poésies sacrées et philosophiques, tirées des livres saints. Nouv. éd.  
considérablement augm., & enrichie de gravures.  
Paris, 1763. E.B. .84153

## ADDITIONS

LEFRANC (GEORGES).

--- Les organisations patronales en France, du passé au présent. [Bibl. Hist.]

Paris, 1976.

.338(44)06 Lef.

--- Le mouvement socialiste sous la Troisième République, 1875-1940. [Bibl. Hist.]

Paris, 1963.

Hist. Lib.

--- Le mouvement syndical sous la Troisième République. [Bibl. Hist.]

Paris, 1967.

.33188(4408) Lef.

--- Another copy.

C.E.G.S.

--- Le mouvement syndical, de la Libération aux événements de mai-juin 1968. [Bibl. Hist.]

Paris, 1969.

C.E.G.S.

--- Le syndicalisme en France. 11e éd. ... 106e mille. [Que Sais-Je?]

Paris, 1981.

.33188(44) Lef.

LEFRANC (ROBERT).

--- The combined use of radio and television and correspondence courses in higher education. See COUNCIL OF EUROPE. COUNCIL FOR CULTURAL CO-OPERATION.

--- The combined use of radio and television and correspondence courses in higher education; European university and post-university distant study systems. See COUNCIL OF EUROPE. COUNCIL FOR CULTURAL CO-OPERATION.

--- Training of teachers in the use of audio-visual media. [Counc. of Europe, Course for Cult. Co-operation, Educ. in Europe Ser.]

[Strasbourg, 1974.]

C.E.G.S.



LE FRANC DE POMPIGNAN (JEAN JACQUES) Marquis [continued].

--- Voyage de Languedoc et de Provence. See CHAPELLE (C.E.L.) and  
BACHAUMONT (F. LE C. DE). Voyages amusants.

LE FRANÇAIS DE LALANDE (JOSEPH JÉRÔME). See LALANDE.

LE FRANÇOIS (A.B.) pseud. of ALEXANDRE BAILLY.

--- Mysteries of the old castles of France, or, secret intrigues of the  
kings and queens, princes and princesses and other great personages  
of the times. By a society of arch seers under the direction of A.B.  
Le F. Tr. by S.T. Haley.  
Lond. [1848.] O.S. .9(44) Lef.

LE FRANÇOIS (CH. ANT.).

--- Grammaire universelle, classique et polémique. 3 vols.  
Paris, 1824. Ct.9.50-52.

LEFRANÇOIS (GABRIEL).

--- Le vocabulaire du navire, anglais-français; recueil de termes  
techniques employés en construction navale, etc. 2e éd. rev. et augm.  
Paris, 1953. Ref. .623803:.44 Lef.

LE FRANÇOIS DE LALANDE (JOSEPH JÉRÔME). See LALANDE.

LEFRANÇOIS-PILLION (LOUISE).

--- L'art du XIV<sup>e</sup> siècle en France. Suivi d'un chapitre sur le vitrail  
par J. Lafond. Paris [1954.]  
~~7(44024-6) Lef.~~  
-7(44024-026) Lef.

LEFROY (AUGUSTUS HENRY FRAZER).

--- Leading cases in Canadian constitutional law.  
Toronto, 1914. Keith Coll.I.6.  
\*\*\* Berriedale Keith Collection.

--- 2nd ed. with additional cases by R.F. McWilliams. *Law Lib.*  
Toronto, 1920. ~~.346(74) Lef.~~

--- A short treatise on Canadian constitutional law. With an historical  
introd. by W.P.M. Kennedy.  
Toronto, 1918. Keith Coll.I.7.  
\*\*\* Berriedale Keith Collection.

ADDITIONS

LE FRANCE DE POMPIGNAN (JEAN GEORGES) Abp.

--- Le véritable usage de l'autorité séculière dans les  
matières qui concernent la religion. Par M. l'Év. D.P.  
[i.e. J.G. Le F. de P.]

Avignon, 1753.

JA 2987/1

\*\*\* Adam Smith Collection.

LEFRANCOIS (GUY R.).

--- Psychology.

Belmont, Calif. [1980.] F .15 Lef.

LEFRERE (PAUL).

--- See DOWIE (JACK) and L. (P.).

LEFROY (CHRISTOPHER EDWARD).

[---] The brigands in Egypt. Solution of the international crisis. Letters to an Englishman by Peter the Hermit. Tr. from the French.  
Lond., 1882. Zp.9.46/4.

[---] Letters [by J. Coker, J. Hinton, and others] that have lately appeared in the Oxford and Cambridge papers, under different signatures, on the crusade of the nineteenth century [of the British and Foreign Bible Society]. Collected and re-published ... by Peter the Hermit.  
2nd ed. Lond., 1812. QP. 148/2.

[---] Pamphlets on the crusade of the nineteenth century. (With some others.) By Peter the Hermit. 5 pts. (in 1).  
Lond., 1812-14. C\* 25.42.

\*\*\* The first pt. is another ed. of the 'Letters,' with an additional title-page and additions.

LEFROY (GEORGE ALLISTER).

--- The mechanics of spouted beds. [Th.]  
Cambridge, 1966. Engin. Lib.

LEFROY (HAROLD MAXWELL-). See MAXWELL-LEFROY (HAROLD).

LEFROY (THOMAS).

--- Memoir of Chief Justice Lefroy, by his son, T.L.  
Dublin, 1871. ~~C.S.~~ .34(415)092 Lef.Lef.

LEFROY (Right Hon. THOMAS LANGLOIS).

--- Memoir. See LEFROY (T.)

LEFROY (WILLIAM).

--- The Christian ministry; its origin, constitution, nature and work, etc.  
[The Donnellan Lect. University of Dublin, 1887-8.]  
Lond., 1890. Y\* 5.6.

LEFSCHETZ (SOLOMON).

--- Algebraic geometry. Lond., 1953. ~~.516 Lef.~~  
JCM Lib.

[Continued overleaf.]

## ADDITIONS

### LEFROY (LAETITIA).

- The Adoption Advice Service - Dublin; the first  
three years, May 1977 - May 1980. [Barnardo's.]  
[Dublin, 1980.] P .36273(415) Lef.
- Another copy. Soc. Work Lib.

### LEFROY (Sir JOHN HENRY).

- Memorials of the discovery and early settlement  
of the Bermudas or Somers Islands 1515 [or rather  
1511] - 1685. Comp. from the Colonial records ...  
2 vols. Lond., 1877-79. M.C.3.18<sup>1-2</sup>.

\*\*\* ~~Mackinnon Collection.~~  
*Sir John Murray Collection.*

### LEFROY (W. CHAMBERS).

- The ruined abbeys of Yorkshire. New & rev. ed.  
Lond., 1908. .7267(4274) Lef.

LEFSCHETZ (SOLOMON) [continued].

--- Algebraic topology. [Amer. Math. Soc. Colloq. Publ. 27.]  
New York City, 1942.

~~.51303 Lef.~~  
JCM Lib.

--- L'analysis Situs et la géométrie algébrique. [Borel, Coll. de Monog.  
sur la théorie des fonctions.]  
Paris [1924.]

.517508 Bor<sup>28</sup>.

--- ed. Contributions to the theory of nonlinear oscillations. 5 vols.  
[Ann. of Math. Stud. 20, 29, 36, 41, 45.]

Princeton.

.53132 Lef.

\*\*\* Mimeographed typescript.

1. [By] S.P. Diliberto, L.L. Rauch, etc. 1950.

2. [By] M.L. Cartwright, E.A. Coddington, etc. 1952.

3. [By] G. Seifert, F. Haas, etc. 1956.

4. [By] H. Antosiewicz, R. Bass, etc. 1958.

5. [By] J.P. LaSalle, J. Jarnik ... Ed. by L. Cesari, J. La  
Salle and S.L. 1960.

--- Another copy. Vol. 1. Engin. Lib.

--- Differential equations; geometric theory. [Pure and Appl. Math.  
Vol. 6.]

New York, 1957.

~~.51738 Lef.~~  
JCM Lib.

--- 2nd ed. New York [1963.] Computer Unit Lib.

--- Another copy. Tech. Maths. Lib.

--- Géométrie sur les surfaces et les variétés algébriques. [Villat,  
Mém. des Sci. Math. 40.]

Paris, 1929.

~~.5104 Mém.~~  
JCM Lib.

--- Introduction to topology. [Princeton Math. Ser. 11.]

Princeton, 1949.

~~.51383 Lef.~~  
JCM Lib.

[Continued overleaf.]

ADDITIONS

LEFSCHETZ (SOLOMON).

— Applications of algebraic topology; graphs and networks,  
the Picard-Lefschetz theory and Feynman integrals.  
[Appl. Math. Sci. Vol. 16.]

New York, 1975.

JCM Lib.

LEFSCHETZ (SOLOMON) [continued].

--- Lectures on differential equations. [Ann. of Math. Stud. 14.]  
Princeton, 1946. JCM Lib.

--- 2nd pr.  
Princeton, 1948. Engin. Lib.

--- Stability of nonlinear control systems. [Math. in Sci. and Engin.  
13.]  
New York, 1965. Engin. Lib.

--- Two other copies. JCM Lib.

--- Topics in topology. 2nd pr. [Ann. of Math. Stud. No. 10.]  
Princeton, 1951. JCM Lib.

--- Topology. [Amer. Math. Soc. Colloquium Publ. 12.]  
New York, 1930. JCM Lib.

--- See FOX (RALPH HARTZLER), SPENCER (DONALD CLAYTON) and TUCKER  
(ALBERT WILLIAM) eds. Algebraic geometry and topology. A symposium  
in honor of S.L.

--- See LA SALLE (JOSEPH PIERRE) and L.(S.)

LEFT BOOK CLUB.

--- [Membership forms and leaflets.]  
Lond. [c. 1938.] S.B.P .65558(42) Lef.

--- See LEWIS (JOHN) Ph.D. The L.B.C.; an historical record.

LEFT (The) in Britain during 1975 and 1976; a bibliographical guide.  
An author, title and chronological index to accompany the  
Harvester/Primary Social Sources Microform Collection. Comp. by  
L. Langridge. Pts. 1-2 (in 1). [Harvester/Primary Soc. Sources.]  
Brighton, 1982. Ref. .335(42085) Lef.

LEFT (The) in Britain during 1977 and 1978; a bibliographical guide.  
An author, title and chronological index to accompany the  
Harvester/Primary Social Sources Microform Collection. Comp. by  
B. Harris. [Harvester/Primary Soc. Sources.]  
Brighton, 1982. Ref. .335(42085) Lef.

LEFT (The) in Britain during 1979 and 1980; a bibliographical guide.  
An author, title and chronological index to accompany the  
Harvester/Primary Social Sources Microform Collection. Comp. by  
S. Stephens. [Harvester/Primary Soc. Sources.]  
Brighton, 1983. Ref. .335(42085) Lef.

LEFT (The) in Britain during 1981 and 1982; a bibliographical guide.  
An author, title and chronological index to accompany the  
Harvester/Primary Social Sources Microform Collection. Comp. by  
S. Joshua. Pts. 1-2 (in 1). [Harvester/Primary Soc. Sources.]  
Brighton, 1984. Ref. .335(42085) Lef.

LEFT (THE) NEWS. Nos. 13-37. May 1937 - May 1939.  
[Lond.] S.B. .65558(42) Lef. Lef.

\*\*\* Wanting nos. 15, 20-26, 29, 31, 33-36.



ADDITIONS

LEFT INDEX; a quarterly index to periodicals of the left.  
1984, no. 1- Spring 1984-

Santa Cruz.

Ref...3354016 Lef.

LEFT (THE) REVIEW. Vols. 1-3(in 8). October, 1934-May, 1938. [Eng.  
Little Mag. No. 3.]  
Lond., 1968. Per. .82 Lef.

LEFTON (MARK).

--- SKIPPER (JAMES K.) and McGAGHY (CHARLES H.).

--- eds. Approaches to deviance; theories, concepts, and research  
findings. [Appleton-Century-Crofts Sociol. Ser.]  
New York [1968.] Law Lib.

LEFTWICH (ADRIAN).

--- Redefining politics; people, resources and power.  
Lond., 1983. .32011 Lef.

--- ed. South Africa; economic growth and political change. With  
comparative studies of Chile, Sri Lanka and Malaysia. Contributors:  
J. Barber [and others].  
Lond., 1974. C.A.S.

LEFTWICH (JAMES ADOLF).

--- La Jolla's house of many legends [Casa de las Joyas designed by  
Herbert Palmer].  
La Jolla [1978.] ~~P. 72884(79498) Lef.~~  
P. 728(79498) Lef.

LEFTWICH (RALPH WINNINGTON).

--- An index of symptoms, with diagnostic methods. 5th ed.  
Lond., 1915. .61607 Lef.

--- On syphonage and hydraulic pressure in the large intestine, with  
their bearing upon the treatment of constipation, appendicitis ...  
Lond., 1903. .61236 Lef.

[Continued overleaf.]

LEFTWICH (RALPH WINNINGTON) [continued].

--- Shakespeare's handwriting and other papers.

Worthing [1921.]

~~.92 Sha. Lef.~~  
~~.82233 Lef.~~

LEFTWICH (RICHARD HENRY).

--- The price system and resource allocation. Rev. ed.

New York, 1965.

~~3385 Lef.~~  
~~33852 Lef.~~

~~--- 3rd ed. --- New York [1966.]~~

~~R.R. (Econ.)~~

~~--- Another copy.~~

~~R.R. (Econ.)~~

LEFUSE (M.).

--- The life and times of Arabella Stuart.

Lond., 1913.

~~R\* 3.44.~~  
~~9(42055-061) Stu. Lef.~~

ADDITIONS

LEFTWICH (RICHARD HENRY).

--- The price system and resource allocation. 4th ed.  
[Holt Int. Ed.]

Lond. [1970.]

Business Stud. Lib.

--- 3rd ed. New York [1966.]

~~Business Stud. Lib.~~

33852 Lef.

LEGACY (The) of Egypt. See GLANVILLE (S.R.K.) ed.

LEGACY (The) of Greece. See LIVINGSTONE (R.W.) ed.

LEGACY (The) of India. See GARRATT (G.T.) ed.

LEGACY (The) of Islam. See ARNOLD (Sir T.W.) and Guillaume (A.) eds.

LEGACY (The) of Israel. See BEVAN (E.R.) and SINGER (C.) eds.

LEGACY (The) of the Middle Ages. See CRUMP (C.G.) and JACOB (E.F.) eds.

LEGACY (The) of Persia. See ARBERRY (A.J.) ed.

LEGACY (The) of Rome. See BAILEY (C.) ed.

LE GAL (ÉTIENNE).

~~--- Apprenons à ponctuer. Pourquoi, comment il faut ponctuer.  
[Bibl. des Chercheurs et des Curieux.]~~

~~Paris, 1933. R.R. (French).~~

--- Ne dites pas ... mais dites ... Barbarismes, solécismes,  
locutions vicieuses. Préface de M.É. Bourciez. Nouv. éd.  
rev. et augm. 61e mille. [Bibl. des Chercheurs et des  
Curieux.]

Paris, 1948.

~~French Lib.~~  
4483 Le G.

--- Nouv. éd., rev. et augm. 71e mille.

Paris, 1961.

.4483 Le G.

--- Another copy.

French Lib.

--- Le parler vivant au XXe siècle; l'usage en face de la règle.

[Paris, 1961.]

.44 Le G.

--- Another copy.

~~French Lib.~~  
-44 Le G.

## ADDITIONS

LE GAL (ETIENNE).

--- Cent manières d'accommoder le français ...

Paris, 1932.

.4483 LeG.

--- Apprenons à ponctuer. Pourquoi, comment il faut ponctuer.  
[Bibl. des Chercheurs et des Curieux.]

Paris, 1933.

.4419 Le G.

--- Ne dites pas ... mais dites ...; barbarismes, solécismes,  
locutions vicieuses. Préface de É. Bourciez. 22e mille.

Paris, 1925.

.4483 Leg.

LE GAL (YVES).

--- Influence des dérivés formiminés sur la biosynthèse des purines  
chez [*Escherichia coli*] B. [Th.]

[Paris, 1968.]

E.M.L.

LEGAL AID ACT, 1974.

--- See HARRIS (BRIAN) and RICKARD (ROGER). Legal aid and advice; a  
guide to the Legal Aid Act, 1974 ...

LEGAL aid and world poverty; a survey of Asia, Africa and Latin America.  
(Papers presented at the inaugural meeting of the Committee on Legal  
Services to the Poor in the Developing Countries held in New York,  
November 13 - 15, 1972.) [Praeger Special Stud. in Int. Econ. and  
Development.]

New York, 1974.

Law Lib.

LEGAL aid in South Africa. See CONFERENCE ON LEGAL AID IN SOUTH AFRICA,  
Durban, 1973. Legal aid in South Africa.

LEGAL AID (SCOTLAND) ACT, 1949.

--- The Legal Aid (Scotland) Act, 1949. See LAW SOCIETY OF SCOTLAND.  
The legal aid and advice (Scotland) compendium, containing the  
Legal Aid (Scotland) Act, 1949, and related publications.

LEGAL aspects of economic integration ... See ACADEMIE DE DROIT  
INTERNATIONAL DE LA HAYE. Legal aspects ...

LEGAL aspects of international terrorism. See AMERICAN SOCIETY OF  
INTERNATIONAL LAW. Legal aspects ...

## ADDITIONS

LEGAL aspects of the new international economic order. [Mainly papers presented at a seminar organised by the Centre for Research on the New International Economic Order with the support of the International Law Association and held at St. John's College Oxford in March 1979.] Ed. by K. Hossain.

Lond., 1980.

.34157 Leg.



Dear Mr. Tolson:

I have the honor to acknowledge the receipt of your letter of the 11th instant regarding the matter mentioned therein.

I am sorry that I cannot give you a more definite answer at this time, but I am sure that you will understand the reasons therefor.

I am, Sir, very respectfully,  
Yours truly,  
[Signature]

Very truly yours,  
[Signature]

Enclosed for you are two copies of the report mentioned in your letter of the 11th instant.

I am, Sir, very respectfully,  
Yours truly,  
[Signature]

I am, Sir, very respectfully,  
Yours truly,  
[Signature]

LEGAL (A) bibliography of the British Commonwealth of Nations. Vols. 1-7.  
[Sweet & Maxwell Publ.] Lond. Ref. .34(42 B.E.)016 Leg.

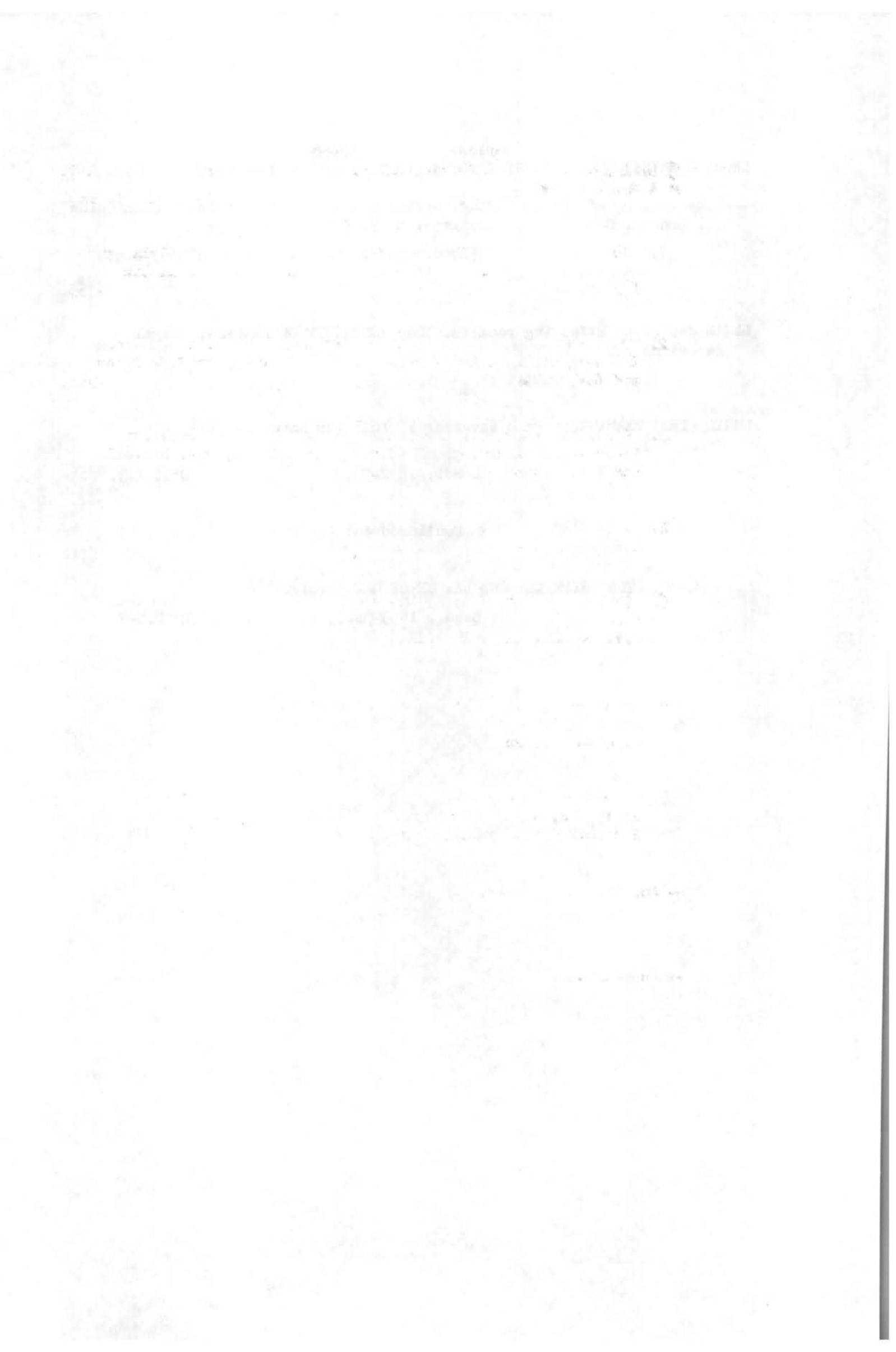
1. English law to 1800; including Wales, the Channel Islands and the Isle of Man. 2nd ed. Comp. by W.H. Maxwell and L.F. Maxwell. 1955.
2. English law from 1801 to 1954, including Wales, the Channel Islands and the Isle of Man. 2nd ed. Comp. by J.S. James and L.F. Maxwell. 1957.
3. Canadian and British-American colonial law from earliest times to December 1956. Comp. by C.R. Brown, P.A. Maxwell and L.F. Maxwell. 1957.
4. Irish law to 1956. 2nd ed. Comp. by C.R. Brown, L.F. Maxwell and W.H. Maxwell. 1957.
5. Scottish law to 1956. Together with a list of Roman law books in the English language. 2nd ed. Comp. by L.F. Maxwell and W.H. Maxwell. 1957.
6. Australia, New Zealand and their dependencies from earliest times to June 1958. With lists of reports of cases ... 2nd ed. 1958.
7. The British Commonwealth, excluding the United Kingdom, Australia, New Zealand, Canada, India and Pakistan. 2nd ed. Comp. by L.F. Maxwell. 1964.

--- Another copy. Vols. 1-2, 5, 7.

Stat. Ref. .34(42 B.E.)016 Leg.

--- Another copy. Vols. 1-7.

Law Lib.



LEGAL COMMISSION OF INQUIRY INTO THE BURNING OF THE REICHSTAG.

--- The burning of the Reichstag; official findings of the Legal Commission  
... London, Sept. 1933. Chairman: D. N. Pritt. 2nd impr.

[Lond.] 1933. P .9(43086) Leg.

LEGAL decisions affecting bankers. See INSTITUTE OF BANKERS. Legal  
decisions ...

LEGAL (THE) EXAMINER. From November 5, 1831 (to March 6, 1833).  
Vols. 1-3.

Lond., 1832-33.

E\*28.1-3.

Continued as:

LEGAL (THE) EXAMINER AND LAW CHRONICLE. Vols. 1-4.

Lond., 1833-34.

E\*28.4-7.

LEGAL HISTORY CONFERENCE.

\*\*\* For later conferences see BRITISH LEGAL HISTORY CONFERENCE.

1st, Aberystwyth, 1972

--- Legal history studies, 1972. Papers presented to the ... Conference ... 18-21 July 1972. Ed. by D. Jenkins.

Cardiff, 1975.

.34(42)09 Leg.

--- Two other copies.

Law Lib.

2nd, Cambridge, 1975

--- Legal records and the historian. Papers presented to the Cambridge Legal History Conference ... and in Lincoln's Inn Old Hall ... 1974. See BAKER (JOHN HAMILTON) ed.

3rd, Edinburgh, 1977

--- Law-making and law-makers in British history. Papers presented to the ... Conference, 1977. Ed. by A. Harding.

Lond., 1980.

.34(42)09 Leg.

LEGAL HISTORY REVIEW, Leiden. See TIJDSCHRIFT VOOR RECHTSGESCHIEDENIS.

LEGAL history studies, 1972 ... See LEGAL HISTORY CONFERENCE, Aberystwyth, 1972. Legal history studies ...

LEGAL ISSUES OF EUROPEAN INTEGRATION. Vol. 1-

Deventer.

1974-

C.E.G.S.

- LEGAL (THE) OBSERVER, or Journal of Jurisprudence ... November, 1830  
(to October, 1835). Vols. 1-10.  
Lond., 1831-35. E.18.2-11.
- LEGAL problems of an enlarged European Community. Ed. by M.E. Bathurst,  
K.R. Simmonds ... [Brit. Inst. Stud. in Int. and Comp. Law, No. 6.]  
Lond., 1972. Law Lib.
- LEGAL (The) process; an introduction to decision-making by judicial,  
legislative, executive and administrative agencies. By C.A. Auerbach,  
L.K. Garrison ... San Francisco [1961.] Law Lib.
- LEGAL profession in Korea; the judicial scrivener and others. By  
J. Murphy, T.R. Lee, S.Y. Lee ... [Korea Law Stud. Ser. No. 2.]  
Dobbs Ferry, 1967. Law Lib.
- LEGAL reform in Scotland. See BLACK (D.D.) Legal reform ...
- LEGAL (The) right to arms in Scotland. [Herald and Genealogist.]  
Westminster [186 - ?] QP. 1014/28.
- LEGALITY (The) of the court held by His Majesty's Ecclesiastical  
Commissioners defended. See CARE (H.). The legality ...
- LE GALL (JEAN PIERRE).
- Droit commercial. 3e année. [Mementos Dalloz.]  
Paris, 1968. Law Lib.
- L'obligation de garantie dans le louage des choses. Préface  
de A. Tunc. [Bibl. de Droit Privé, Tom. 36.]  
Paris, 1962. Law Lib.
- LE GALL (JOËL).
- Recherches sur le culte du Tibre. [Th.] [Paris Univ. Inst. d'Art et  
d'Archeol. Publ. Tom. 2.]  
Paris, 1953. .292212 Le G.

[Continued overleaf.]

LEGAL problems of an enlarged European Community. Ed. by  
M.E. Bathurst, K.R. Simmonds ... [Brit. Inst. Stud. in  
Int. and Comp. Law, No. 6.]  
Lond., 1972. Law Lib.

LEGAL problems of multinational corporations. Papers ...  
prepared for discussion at an International Conference  
on Legal Problems of Multinational Enterprises ...  
Lond. ... 1976.) Ed. by K.R. Simmonds.  
Lond., 1977. Law Lib.

LEGAL records and the historian. See LEGAL HISTORY CONFERENCE,  
Cambridge, 1975. Legal records ...

LE GALL (JEAN PIERRE).

--- French company law. [Europ. Comm. Law Lib. No. 1.]  
Lond., 1974. C.E.G.S.

LE GALL (JOËL).

--- La religion romaine de l'époque de Caton l'Ancien  
au regne de l'empereur Commode. [Regards sur l'Hist.]  
Paris [1975.] .292 Le G.

LE GALL (JOËL) [continued].

--- Le Tibre, fleuve de Rome, dans l'antiquité. Préface de C. Picard.  
[Th.] [Paris Univ. Inst. d'Art et d'Archeol. Publ. Tom. 1.]

Paris, 1953.

.91(376) Le G.

LE GALLEY (DONALD PAUL).

--- ed. Space science. The authors: L. Davis, V.R. Eshleman,  
D.D. Flickinger, etc. [Univ. of California, Engin. and  
Physical Sci. Extension Ser.]

New York [1963.]

Astronomy Lib.



ADDITIONS

LE GALLEY (DONALD PAUL).

— ed. Ballistic missile and space technology ... See  
SYMPOSIUM ON BALLISTIC MISSILE AND SPACE TECHNOLOGY,  
5th, Los Angeles, 1960.

<sup>l</sup>  
LA GALLIENNE (RICHARD).

--- George Meredith; some characteristics. With a bibliography by  
J. Lane. (And Some notes on George Meredith in America, by W.M.  
Fullerton.) 2nd ed. Lond., 1890. V\* 13.47\*.

--- The religion of a literary man. (Religio scriptoris.)  
Lond., 1893. Yc.7.25.

LEGALLOIS (CÉSAR JULIEN JEAN). See LEGALLOIS (JULIEN JEAN CÉSAR).

LEGALLOIS (JULIEN JEAN CÉSAR).

--- Œuvres de C.L. ... Avec des notes de M. Pariset ... [With a 'Notice  
sur l'auteur,' by E. Legallois]. 2 tom. (in 1).  
Paris, 1824.

~~O.S. 611.12.~~  
S.B. 612072 Leg.

--- Expériences sur le principe de la vie, notamment sur celui des  
mouvements du coeur ... Paris, 1812. S.B. .61207204/1.

--- Another copy. \*H.29.28.

--- Experiments on the principle of life and particularly on the  
principle of the motions of the heart ... including the report  
made to the first class of the Institute, upon the experiments  
relative to the motions of the heart ... Tr. by N.C. and J.G.  
Nancrede. Philadelphia, 1813. O.S. .612072 Leg.

LE GALLOIS (PIERRE).

--- Traité des plus belles bibliothèques de l'Europe. Des  
premiers livres qui ont été faits ...  
Paris, 1680. \*M.30.35.

LEGARE (DANIEL).

--- An experimental inquiry into the effects of tobacco fumes on the  
system ... (An inaugural dissertation for the degree of Doctor of  
Medicine ... of the University of Pennsylvania ... 1805.)

Philadelphia, 1805.

~~O.S. .6104/5.~~  
S.B. 6104/7

--- Another copy.

~~O.S. .6104/5.~~  
S.B. 6104/7

## ADDITIONS

LE GALL(OT) (JEAN).

--- Description générative et transformationnelle de la langue française. Avec des travaux pratiques et leurs corrigés. [Nathan-Univ.]

[Paris, 1975.]

.445 Le G.

LEGARÉ (ANNE).

--- Les classes sociales au Québec.

Montréal, 1977.

.30144(714) Leg.

LEGASSICK (MARTIN).

--- Class and nationalism in South African protest ... See SYRACUSE, New York. UNIVERSITY. PROGRAM OF EASTERN AFRICAN STUDIES. Eastern African studies. 15.

LEGAST (ANNE).

--- La fauna en la orfebrería Sinú. [Fund. de Investig. Arqueol. Nac., Banco de la República.]

Bogotá, 1980[1981].

Archaeol. Lib.

LEGAT (MICHAEL).

--- An author's guide to publishing. Repr.

Lond., 1982.

Ref. .6555 Leg.

LEGATE (DAVID M.).

--- Stephen Leacock; a biography. [Laurentian Lib. 63.]

Toronto, 1978.

.8197 Lea. Leb.

LĒGATUM ARNAE MAGNĀEANUM, Copenhagen.

--- Katalog over den Arnamagnāeanske håndskriftsamling. Udgivet af  
Kommissionen for det Arnamagnāeanske Legat. 4 Bds. (in 2).

København, 1888-1894.

S.R. Ref.

.091(48) Leg.

--- ed. See EDDA. ICELANDIC AND LATIN. Edda Sæmundar hinns Fróða.

--- ed. See GUNNLAUGSSAGA. Sagan af Gunnlaugi Ormstungu.

LE GAUFFRE ( - ).

--- Recit veritable de ce qui s'est fait & Passé aux exorcismes de plusieurs  
religieuses de la ville Louviers en presence de Monsieur le Penitencier  
d'Evreux & de Monsieur le Gauffre.

Paris, 1643.

De.10.87.

LEGAULT (ALBERT).

--- comp. See INTERNATIONAL INFORMATION CENTRE ON PEACE-KEEPING  
OPERATIONS. Peace-keeping operations ...

--- and LINDSEY (GEORGE).

--- The dynamics of the nuclear balance. Rev. ed.

Ithaca, 1976.

.341672 Leg.

LĒGAUT (MARCEL).

--- [Pières d'un croyant.] Meditations of a believer. Tr. by  
S.O. Palleske and S. Palleske.

Lond., 1956.

New Coll. Lib.

LEGAY (JEAN MARIE).

--- and TOMASSONE (R.).

--- eds. Biométrie et écologie. See BIOMÉTRIE et écologie.

[Continued overleaf.]

LEGAY (JEAN MARIE) [continued].

--- TOMASSONE (R.) and JOLIVET (E.).

--- eds. Biométrie et biologie cellulaire. See BIOMÉTRIE et biologie cellulaire.

--- eds. Biométrie et temps. See BIOMÉTRIE et temps.

LEGEAIS (RAYMOND).

--- L'autorité parentale; étude de la loi no. 70-459 du 4 juin 1970 et des textes qui l'ont complétée. Préface de J. Carbonnier.

Paris [1973.]

Law Lib.

--- Les règles de preuve en droit civil; "permanences et transformations". Préface de R. Savatier.

Paris, 1955.

Law Lib.

LEGEND (A) of Argyle. See CAREY (DAVID).

LEGEND OF AQHAT. See RAS SHAMRA TABLETS. AQHAT.

LEGEND OF DANIEL. See RAS SHAMRA TABLETS. AQHAT.

LEGEND (The) of Genevieve. See MOIR (D.M.).

LEGEND OF THE HAIRY ANCHORITE.

--- See WILLIAMS (CHARLES ALLYN). The German legends of the hairy anchorite.

--- See WILLIAMS (CHARLES ALLYN). Oriental affinities of the legend of the hairy anchorite.

## ADDITIONS

LEGEAR (CLARA EGLI).

--- comp. The Hotchkiss map collection; a list.  
See LIBRARY OF CONGRESS, Washington. MAP DIVISION.

LEGEND (The) of Arthur in the Middle Ages; studies presented  
to A.H. Diverres by colleagues, pupils and friends. Ed.  
by P.B. Corput [and others.] [Arthurian Stud. 7.]  
Cambridge, 1983. .39822 Art. Leg.

--- Another copy.

French Lib.

~~LEGEND OF KERET.~~

~~La Légende de Keret roi des Sidoniens. Publiée d'après une tablette de Ras-Shamra par Charles Virolleaud. [Mission de Ras-Shamra. Tom. 2.] Paris, 1936. 913(3944) Mis.~~

~~See GRAY (J.). Lecturer on Hebrew. The Krt text in the literature of Ras-Shamra.~~

LEGENDA aurea. See VORAGINE (J. DE) Abp.

LEGENDA lignea; with an answer to Mr. Birchley's Moderator (pleading for a toleration of Popery) and a character of ... saints revolted to the Church of Rome. [Preface signed D.Y.] Lond., 1653. B.24.88.

LEGENDÆ Catholicæ; a lytle boke of seyntlie gestes. [Ed. by W.B.D.D. Turnbull.] Edin., 1840. ~~RC.5.60.~~ S.B. 82119 Leg.

LEGENDE (ADRIEN MARIE).

--- Beweis, dass das Verhältniß des Kreisumfanges zum Durchmesser und das Quadrat desselben irrationale Zahlen sind. See RUDIO (F.). Archimedes, Huygens, Lambert, Legendre.

--- Éléments de géométrie, avec des notes. 7e éd. Paris, 1808. 0.14.11/1.

--- 9e éd. Paris, 1812. Yx.9.93.

--- 10e éd. Paris, 1813. 0.14.12.

--- 14e éd. Paris, 1859. Zf.9.38.

--- Éléments de géométrie, par A.M.L. Nouv. éd., avec additions et modifications par ... A. Blanchet ... suivie de la 14e éd. donnée par A.M.L. Paris, 1845. X.12.39/1.

[Continued overleaf.]

## ADDITIONS

LEGEND OF KERET. See RAS SHAMRA TABLETS. KERET.

LEGEND (The) of Mary Queen of Scots [by T. Wenman?]  
and other ancient poems, now first published from  
MSS. of the sixteenth century. With an introduction,  
notes and an appendix [by J. Fry].

Lond., 1810.

\*S.24.6.

LEGENDA sactorum trium regum. See JOHN, of Hildesheim. Legenda ...

LÉGENDE (La) de Tristan au moyen âge; actes du colloque des  
16 et 17 janvier 1982. Publ. par les soins de D.  
Buschinger. [Göppinger Arbeiten z. Germanistik, 355.]

Göppingen, 1982.

.39822 Tri. Lég.



LEGENBRE (ADRIEN MARIE) [continued].

- Elements of geometry and trigonometry, with notes. Tr. from the French ... [by T. Carlyle]. Ed. by D. Brewster ... With notes and additions [by the author] and an introductory chapter on proportion [by the translator].  
Edin., 1822. JA 411
- Another ed. Edin., 1824. 0.4.35.
- Another ed. Revised and adapted to the course of mathematical instruction in the United States, by C. Davies.  
Philadelphia, 1844. I\* 18.66.
- Essai sur la théorie des nombres.  
Paris, an vi [1798?] ~~X.8.28.~~  
E.B. 51281 Leg.
- 2e éd. (And Supplément.) 2 pts. (in 1).  
Paris, 1808-16. X.8.29.  
\*\*\* Second supplement (1825) wanting.
- 3e éd. Théorie des nombres. 2 tom.  
Paris, 1830. \*0.19.70-71.
- Exercices de calcul intégral sur divers ordres de transcendentes et sur les quadratures. 3 tom.  
Paris, 1811-17. \*0.25.7-9.
- Mémoire sur les transcendentes elliptiques.  
Paris, an 2 [1793.] \*I.16.71/1.
- Nouvelles méthodes pour la détermination des orbites des comètes; avec un supplément [and a second supplement] contenant divers perfectionnemens de ces méthodes, et leur application aux deux comètes de 1805. 3 pts. (in 1).  
Paris, 1806. I\* 16.13.
- Tables of the logarithms of the complete  $\Gamma$  - function to twelve figures. Originally computed by A.M.L. [Tracts for Computers, IV.]  
Lond., 1921. F .51 T.F.C.

[Continued overleaf.]

LEGENDE (ADRIEN MARIE) [continued].

--- Another copy.

Math. Lib.

--- Traité des fonctions elliptiques et des intégrales Eulériennes, avec des tables pour en faciliter le calcul numérique. 3 tom.

Paris, 1825-28.

\*0.19.72-74.

--- Tables of the complete and incomplete elliptic integrals. Reissued from tome II of Legendre's Traité des fonctions elliptiques, Paris, 1825. With an introd. by K. Pearson. With autographed portrait of Legendre. Lond., 1934.

~~51736 Leg~~  
JCM Lib.

--- See LAGRANGE (J.L., comte de). Abhandlungen über Variations-Rechnung. Tl. 2. Abhandlungen von Lagrange, Legendre, und Jacobi.

LEGENDE (MAURICE).

--- L'esprit de l'Espagne. 10 pts. (in 1). [Les Lettres, Déc., 1920 - Mai, 1922.]

Paris, 1920-22.

.9(46)04 Leg.

\*\*\* No titlepage. With cover for Les Lettres, 1er Janvier, 1921.

--- Portrait de l'Espagne. 2e éd.

Paris, n.d.

.9(46)01 Leg.

--- See GRECO (EL) [DOMENICO THEOTOCOPULI]. Domenikos Theotokopoulos called El Greco. By M.L. and A. Hartmann.

LEGENDS and ballads. [The Penny Poets, No. 36; The Masterpiece Lib.]

Lond. [189 - .]

~~O.S.P. 82408 Leg.~~  
P. 82104 Leg.

LEGENDS of the Braes o' Mar. See GRANT (JOHN) of Glencairn.

LEGENDS of the north. See BUCHAN (PATRICK).

LA GENTIL ( - DE LA BARBINAIS). See LA BARBINAIS LE GENTIL ( - DE).

## ADDITIONS

### LEGENBRE (CAMILLE).

- French Canada in crisis; a new society in the making?  
See MINORITY RIGHTS GROUP. Report, No. 44.

### LEGENBRE (AIMÉ FRANÇOIS).

- [La civilisation chinoise moderne.] Modern Chinese  
civilisation. Tr. ... by E.M. Jones. Repr.  
Taipei, 1971. .9(5104)01 Leg.

### LE GENDRE (GILBERT CHARLES) Marquis de Saint-Aubin sur Loire.

- Traité historique et critique de l'opinion. 4e éd.  
9 tom. Paris, 1758. \*EE.8.8-16.

### LE GENDRE (LOUIS).

- Nouvelle histoire de France, depuis le commencement de  
la monarchie, jusques à la mort de Louis XIII. 3 tom.  
Paris, 1718. ~~Vc. 1.30-32.~~  
E.B.F. 9(44) Leg.

### LEGENBRE (PIERRE).

- ed. L'administration du XVIIIe siècle à nos jours.  
[Thémis, Sect. Textes et Doc. 10.]  
Paris [1969.] .35(44033-083) ~~0022~~ Leg.

--- Another copy. C.E.G.S.

- Histoire de l'administration de 1750 à nos jours.  
["Thémis", Man. Juridiques, Écon. et Pol.]  
Paris, 1968. .35(44034-083) Leg.

### LEGENHAUSEN (LIENHARD).

- See KÖNIG (EKKEHARD) and L. (L.).

LEGENDS of Strathisla ... See SIM (R.). Legends ...

LE GENTIL (CONSTANT).

- Origines du droit; essai historique sur les preuves sous les législations juive, égyptienne, indienne, grecque et romaine ...  
Paris, 1863. Law Lib.

LE GENTIL (GEORGES).

- Camoëns; l'oeuvre épique et lyrique. [Connaiss. des Lett. 39.]  
Paris [1954.] .86912 Cam. Le G.

- La littérature portugaise. [Coll. Armand Colin, 180.]  
Paris, 1935. .86909 Le G.

- Les Portugais en extrême Orient. Fernão Mendes Pinto, un précurseur de l'exotisme au XVIIe siècle.  
Paris, 1947. .91(5) Le G.

LE GENTIL (JEAN).

- continuator. See ODESPUN DE LA MESCHINIÈRE (L.). Recueil des actes ... et mémoires concernant le clergé de France.

LE GENTIL (PIERRE).

- La Chanson de Roland. [Connaiss. des Lett. 43.]  
Paris, 1955. .84111 Cha. Le G.

- Two other copies. French Lib.

- La littérature française du moyen âge. [Coll. Armand Colin, No. 369.]  
Paris [1963.] .8409<sup>A-C</sup> Le G.

- ~~--- Another copy. R.R. (French).~~

- Another copy. French Lib.

- La poésie lyrique espagnole et portugaise à la fin du moyen âge.  
2 ptes. Rennes. .8611-2 Le G.

1. Les thèmes et les genres. 1949.
2. Les formes. 1952.

ADDITIONS

LE GENTIL (PIERRE).

- Villon. [Repr.] [Connais. des Lett. 59.]  
Paris [1974.] French Lib.
- Another copy. French Lib.
- Another copy. .84125 Le G.
- La chanson de Roland. 2e éd., rev. et mise à jour,  
illustrée. [Connais. des Lett. 43.]  
Paris [1967.] .84111 Cha. LeG.

LE GENTIL (PIERRE) [continued].

--- Le virelai et le villancico; le problème des origines arabes.  
[Coll. Portugaise, vol. 9.]

Paris, 1954.

.80914 Le G.

LE GENTIL DE LA GALAISIÈRE (GUILLAUME JOSEPH HYACINTHE JEAN BAPTISTE).

--- Voyage dans les mers de l'Inde, fait par ordre du roi, à  
l'occasion du passage de Vénus sur le disque du soleil, le 6 juin, 1761,  
& le 3 du même mois 1769. Tom. 1-2.

Paris, 1779-81.

~~E.B.~~ 9104 Le G.

JA 1026-1027

\*\*\* Forbes Bequest.

--- Another ed. Tom. 1-2. en Suisse [Geneva?] 1780.

\*P .28.48-49.

LÉGER, St., Bp. of Autun.

--- Vie de Saint Léger ... [By a monk of Saint-Symphorien d'Autun.]  
[Guizot, Coll. d. Mém. 2.]

Paris, 1823.

Yk.11.2.

--- La vie de Saint Léger. See LINSKILL (J.). Saint Léger ...

--- Sanct Leodegar. See DIEZ (F.C.) ed. Zwei altromanische  
Gedichte.

LÉGER (ALÉXIS SAINT-LÉGER). See PERSE (SAINT-JOHN) pseud. of.  
A. ST.-L. LÉGER.

LEGER (CAROLUS VICTOR).

--- Suntne variae cerebri aut aliorum organorum laesiones pathologicae  
quae apoplexiam inferre aut mentiri possint? [Th.]

Parisiis, 1824.

QP. 877/21.

LÉGER (CHARLES) Economist.

--- La démocratie industrielle et les comités d'entreprise en Suède.  
Préface d'A. Marchal. [Cahiers de la Fondation Nat. des Sci. Pol.  
14.]

Paris, 1950.

.331152(485) Lég.

ADDITIONS

LE GENTIL (PIERRE).

— See MÉLANGES de langue et de littérature médiévales offerts à  
P. Le G.

LÉGER (CHARLES) of the Musée de Meudon.

--- Courbet. [Maîtres d'Autrefois.]

Paris, copyright 1929.

F.75(4406-08) Leg. ~~Fine Art Lib.~~

--- See BALZAC (HONORÉ). APPENDIX. Balzac mis à nu et les dessous de la société romantique.

LÉGER (FERNAND).

--- [Fonctions de la peinture.] Functions of painting. Ed. and introduced by E.F. Fry, with a preface by G.L.K. Morris. [Doc. of 20th-Cent. Art.] (Tr. by A. Anderson.)

Lond., 1973.

.75(4408) Lég.

~~--- Another copy.~~

~~Fine Art Lib.~~

#### EXHIBITION CATALOGUES

--- Léger and purist Paris. [Catalogue of an exhibition at] the Tate Gallery, 18 November 1970 - 24 January 1971. [Comp. by J. Golding and C. Green.]

Lond., 1970.

.75(4408) Lég.

--- Another copy.

Fine Art Lib.

~~--- Fernand Léger. [Catalogue of an exhibition held at the] Grand Palais, octobre 1971 - janvier 1972. (Exposition... réalisée par la Réunion des Musées Nationaux.)~~

~~Paris, 1971.~~

~~Fine Art Lib.~~

#### APPENDIX

--- See GREEN (CHRISTOPHER) Art Historian. L. and the avant-garde.

LEGER (FRANÇOIS).

--- Les influences occidentales dans la révolution de l'Orient; Inde-Malaise-Chine, 1850-1950. 2 vols. [Civil. d'Hier et d'Aujourd'hui.]

Paris [1955.]

.9(5:4) Leg.



## ADDITIONS

LÉGER (FERNAND).

— Fernand Léger. [Text by E. Tadini.] [Maestri del Colore, 31.]

Milano [1964.]

Fine Art Lib.

— Fernand Léger; drawings and gouaches. [By] J. Cassou and J. Leymarie. (Translation from the French by W.K. Haughan.)

Lond., 1973.

F .75(4408) Lég.

— Fernand Léger. Text by W. Schnalbach. Tr. by R. Allen, with J. Emmons. [Lib. of Great Painters.]

New York, 1976.

F .75(4408) Lég.

— Fernand Léger; the complete graphic work. [Ed. by] L. Saphire. F. Mourlot; preface. (*And Supplement*)

New York [1978.]

F .75(4408) Lég.

— Oeuvres de Fernand Léger, 1881-1955. Catalogue établi par C. Laugier et M. Richet. [Coll. du Musée National d'Art Moderne.]

[Paris, 1981.]

F .75(4408) Lég.

### EXHIBITION CATALOGUES

— Léger and purist Paris. [Catalogue of an exhibition at the Tate Gallery, 18 November 1970 - 24 January 1971. [Comp. by J. Golding and C. Green.]

Lond., 1970.

Fine Art Lib.

— Léger's Le grand déjeuner. [Catalogue of an exhibition organized by G. Hedberg held at] (the Minneapolis Institute of Arts ... [and] the Detroit Institute of Arts ...) [Introductory essay by R.L. Herbert.]

Minneapolis [1980.]

.75(4408) Lég.

— Another copy.

Fine Art Lib.

— Léger et l'esprit moderne, 1918-1931; une alternative d'avant-garde à l'art non-objective ... [Catalogue of an exhibition at the] Musée d'Art Moderne de la Ville de Paris, 17 mars - 6 juin 1982, Museum of Fine Arts, Houston, 9th July - 5th September 1982, Musée Rath, Genève, 4 novembre 1982 - 16 janvier 1983. (Commissaire général: B. Contensou. Commissaires de l'exposition G.C. Fabre, M.-O. Briot.) [Fr. and Eng.]

[Paris, 1982.]

.75(4408) Lég.

LÉGER (JEAN).

--- Histoire générale des églises évangéliques des vallées de Piemont,  
ou Vaudoises. Divisée en deux livres ... 2 pts. (in 1).

Leyde, 1669.

E.B.F .2844 Leg.

LEGER (LOUIS).

--- A history of Austro-Hungary from the earliest time to the year 1889  
... Tr. from the French by Mrs. Birbeck Hill. With a preface by E.A.  
Freeman.

Lond., 1889.

Q\* 15/1.60.

--- Le monde slave; études politiques et littéraires. 2e éd., rev. et  
augm. 2 ser.

Paris, 1897-1902.

Ze.S.C.4.2<sup>1-2</sup>.

\*\*\* Sér. 2 is of 1st ed.

--- Russes et Slaves; études politiques et littéraires. 2e sér.

Paris, 1896.

Ze.S.C.4.1.

--- La Russie intellectuelle; études et portraits.

Paris, 1914.

\*T.1.34.

--- See FRIC (J.V.) and L.(L.)

--- and BARDONNAUT (GEORGES).

--- Les racines de la langue russe.

Paris, 1894.

Zt.11.51.

LEGER (LUCIEN).

--- DUCROQUET (ROBERT) and LEGER (HENRY).

--- Maladies du squelette, etc.

Paris, 1949.

C.M.L.

--- and PATEL (JEAN).

--- Système porte-rate. [Nouv. Traité de Technique Chirurgicale,  
Tom. 13.]

Paris, 1967.

C.M.L.

LÉGER (THÉODORE) D.M.P.

--- The magnetoscope; a philosophical essay on the magnetoid  
characteristics of elementary principles, and their relations  
to the organisation of man.

Lond., 1852.

QP. 295/4.

--- Quaestio danturne membranarum mucosarum varia exanthemata  
causis, symptomatibus, nec non anatomicis characteribus dignoscenda?

[Th.]

Parisiis, 1826.

QP. 878/7.

LEGER (THEODORUS).

--- An strumarum curatio specifica? [Th.]

Parisiis, 1824.

QP. 877/22.

LEGERUS (ANTHONIUS).

--- resp. See SENGUERDIUS (W.) praes.

LEGES Alamannorum. See GERMANY. STATUTES.

LEGES Barbarorum. See FISCHER (H.F.W.D.) ed.

LEGES Burgundionum. See BURGUNDY. LAWS.

LEGES DUODECIM TABULARUM. See TWELVE TABLES.

LEGES Langobardorum. See LOMBARDY. STATUTES.

## ADDITIONS

LEGES Henrici Primi. See ENGLAND. STATUTES. Leges Henrici Primi.

LEGES Visigothorum. See VISIGOTHIC LAW.

LEGG (FRANK E.).

--- joint-author. Gravel beneficiation in Michigan. See AMERICAN CONCRETE INSTITUTE.

LEGG (JOHN WICKHAM).

--- A guide to the examination of the urine.

Lond., 1869.

QP. 323/2.

--- On the bile, jaundice, and bilious diseases.

Lond., 1880.

\*G.1.18.

--- Parenchymatous degeneration of the liver, and other organs caused by raising the natural temperature of the body. [Trans. Path. Soc. Lond., Vol. 24, 1873.]

QP. 429/4.

--- ed. Three coronation orders. [Henry Bradshaw Soc. 19.]

Lond., 1900.

RI.3.

--- ed. Tracts on the Mass. [Henry Bradshaw Soc. 27.]

Lond., 1904.

RI.2.

--- A treatise on haemophilia, sometimes called the hereditary haemorrhagic diathesis. Lond., 1872.

\*F.6.49.

--- ed. See CANTERBURY. CHRISTCHURCH. Inventories of Christchurch ...

--- ed. See CHURCH OF ENGLAND. BOOK OF COMMON PRAYER. The clerk's book of 1549.

--- ed. See CHURCH OF ENGLAND. CONSECRATION OF CHURCHES. English orders for consecrating churches in the 17th century.

--- ed. See ROMAN CATHOLIC CHURCH. BREVARIES. GENERAL. The second recension of the Quingnon breviary.

--- ed. See ROMAN CATHOLIC CHURCH. MISSALS. REGULAR. BENEDICTINE. Missale ad usum Ecclesie Westmonasteriensis.

ADDITIONS

LEGESSE (ASMAROM).

--- Gada; three approaches to the study of African society.  
New York [1973.] .572(63) Leg.

LEGEZA (IRENEUS LÁSZLÓ). See LÁSZLÓ LEGEZA (IRENEUS).

LEGG (ALICIA).

--- ed. Sol LeWitt ... See LEWITT(SOL).

LEGG (JOHN WICKHAM).

--- ed. The Sarum missal. See ROMAN CATHOLIC CHURCH. MISSALS.  
LOCAL. Salisbury.

LEGG (KEITH R.).

--- Patrons, clients and politicians; new perspectives on  
political clientelism. [Working Papers on Development, 3.]  
Berkeley [1976?] C.A.S.

LEGG (LEOPOLD GEORGE WICKHAM).

--- List of diplomatic representatives and agents, England and France,  
1689-1763. [Firth, Notes on the diplomatic relations of England  
and France.] Oxford, 1909. Ym.6.46.

--- Matthew Prior; a study of his public career and correspondence.  
Cambridge, 1921. .82151 Leg.

--- ed. Select documents illustrative of the history of the French  
Revolution. The Constituent Assembly. 2 vols.  
Oxford, 1905. Q\* 7.28-29.

--- joint-ed. See BRITISH DIPLOMATIC INSTRUCTIONS, 1689-1789.

LEGG (S.C.E.)

--- ed. See BIBLE. NEW TESTAMENT. GREEK. Novum Testamentum Graece  
secundum textum Westcotto-Hortianum. Evangelium secundum  
Matthaeum (Marcum) ...

LEGG (STUART).

--- The Heartland. Lond., 1970. .9(501-03) Leg.

LEGGAT (JOHN).

--- See ABELL (SYDNEY GEORGE), L. (J.) and OGDEN (W.G.)

LEGGATT (ALEXANDER).

--- joint-author. The Revels history of drama in English. Vol. 3.  
1576-1613. See REVELS (The) history of drama ...

--- Shakespeare's comedy of love.  
Lond., 1974. .82233 Leg.

ADDITIONS

LEGG (RODNEY).

--- ed. See AUBREY (JOHN). Monumenta Britannica.

LEGGATT (A.P.).

--- and HOBSON (D.C.).

--- See DEPARTMENT OF TRADE AND INDUSTRY. General entries.  
London and County Securities Group Limited ... Report by A.P.L.  
and D.C.H.

LEGGATT (ALEXANDER).

--- Ben Jonson; his vision and his art.

Lond., 1981.

.82234 Leg.



LEGGATT (TIMOTHY<sup>W</sup>).

--- ed. Sociological theory and survey research; institutional change and social policy in Great Britain. See SOCIOLOGICAL theory and survey research ...

LEGGE (ALFRED OWEN).

--- The growth of the temporal power of the papacy; a historical review, with observations upon the 'Council of the Vatican' ...

Lond., 1870.

Yg.9.24.

--- Pius IX; the story of his life to the Restoration in 1850. With glimpses at the national movement in Italy. 2 vols.

Lond., 1875.

Br.2.2-3.

LEGGE (CHARLES DEREK).

--- and WALLER (ROSS DOUGLAS).

--- comps. Handlist of studies in adult education, 1951. Comp. by C.D.L. and R.D.W. for the Universities Council for Adult Education.

Lond., 1952.

Ref.P .374016 Leg.

LEGGE (DAVID).

--- ed. Skills; selected readings. [Penguin Mod. Psychol.]

Harmondsworth, 1970.

.158433 Leg.

--- Another copy.

Machine Intelligence & Perception Lib.

--- Another copy.

Psychol. Lib.

LEGGE (FRANCIS).

--- Forerunners and rivals of Christianity: being studies in religious history from 330 B.C. to 330 A.D. 2 vols.

Cambridge, 1915.

New Coll. Lib.

## ADDITIONS

LEGGATT (TIMOTHY W.).

--- The training of British managers; a study of need and demand. A report written by T.W.L. for the Institute of Manpower Studies. [Nat. Econ. Development Off. Management Educ. Training and Development Committee.]

Lond., 1972.

.65807 Leg.

LEGGE (CHARLES DEREK).

--- comp. Adult education; research in progress in Britain, 1973. A list of on-going research projects concerned with all types of education for adults. Comp. on behalf of the Standing Conference on University Teaching and Research in the Education of Adults ...

Manchester [1973.] Main Ref. .374(42)072  
Leg.

Cover-title.

--- The education of adults in Britain. [Open Univ. Press Ser. in Adult and Continuing Educ.]

Milton Keynes, 1982. .374(42) Leg.

--- The education of adults in Britain. [Open Univ. Press, Ser. in Adult and Continuing Educ.]

Milton Keynes, 1982. .374(42) Leg.

--- Another copy. .374(42) Leg.

LEGGE (DEREK). See LEGGE (CHARLES DEREK).

LEGGE (HELEN EDITH).

--- James Legge, missionary and scholar.

Lond., 1905.

Zr.10.87.

LEGGE (Right Hon. HENRY BILSON).

--- See BUTLER (JOHN) Bp. Some account of the character of ... H.B.L.

LEGGE (J.W.).

--- See LEMBERG (R.) and L. (J.W.)

LEGGE (JAMES).

--- ed. and tr. The Chinese classics. With a translation, critical and exegetical notes, prolegomena, and copious indexes [Chinese and Eng.] Vols. 1-5 (in 8).

Hongkong, 1861-72.

.8951(731) Leg.

\*\*\* No more published.

1. Confucian analects, the Great Learning, and The doctrine of the mean.
2. The works of Mencius.
3. The Shoo-King, or the book of historical documents. 2 pts.
4. The She-King, or the book of poetry. 2 pts.
5. The Ch'un Ts'ew, with the Tso Chuen. 2 pts.

--- 2nd ed., rev. 5 vols. (in 4).

Taipei, 1966.

.8951(731) Leg.

--- tr. The Chinese classics. Tr. into English, with ... essays and ... notes. Revised and reproduced from the author's work containing the original text, &c. Vols. 1, 3.

Lond.

1. The life and teaching of Confucius. [Repr.] 1909.  
New Coll. Lib.
3. The She King, or, the book of poetry. 1876. S\* 14.7.

[Continued overleaf.]

ADDITIONS

LEGGE (HELEN EDITH).

--- A short history of the ancient Greek sculptors.  
With introd. by P. Gardner.

Lond., 1903.

.7333 Leg.

LEGGE (J.S.).

--- comp. and ed. Who's who in Australia. See WHO'S WHO IN  
AUSTRALIA.

LEGGE (JAMES) [continued].

--- tr. The sacred books of China; the texts of Confucianism. 4 pts.  
[Sacred Bks. of the East, 3, 16, 27-28.]  
Oxford, 1879-85. O.S. .29(5) Sac.

--- tr. The sacred books of China; the texts of Tâoism. 2 pts.  
[Sacred Bks. of the East, 39-40.]  
Oxford, 1891. O.S. .29(5) Sac.

--- tr. See FA-HIAN. A record of Buddhistic kingdoms.

--- See LEGGE (HELEN EDITH). J.L., missionary and scholar.

LEGGE (JAMES GRANVILLE).

--- Rhyme and revolution in Germany; a study in German history,  
life, literature and character, 1813-1850.  
Lond., 1918. .9(4307) Leg.

LEGGE (JOHN D.).

--- Australian colonial policy; a survey of native administration  
and European development in Papua. Publ. under the auspices of  
the Australian Institute of International Affairs and the  
Institute of Pacific Relations.  
Sydney, 1956. .3253(94:95) Leg.

--- Britain in Fiji, 1858-1880.  
Lond., 1958. ~~.3253(42:9611) Leg.~~  
.3253(42:9611) Leg.

LEGGE (MARY DOMINICA).

--- Anglo-Norman in the cloisters; the influence of the orders  
upon Anglo-Norman literature. [Edin. Univ. Publ., Land. & Lit.  
2.]  
Edin., 1950. ~~Sp. 12.10.~~  
.447(01):271(42) Leg.

--- Another copy. Di.5.2.

--- Another copy. French Lib.

[Continued overleaf.]

ADDITIONS

LEGGE (JOHN D.).

- Indonesia. [The Mod. Nat. in Hist. Perspective.]  
Englewood Cliffs, copyright 1964. .9(91) Leg.

LEGGE (KAREN).

- Power, innovation, and problem-solving in personnel  
management.  
Lond. [1978.] .6583 Leg.
- Another copy. Business Stud. Lib.
- See GOWLER (DAN) and L. (K.)
- and MUMFORD (ENID).
- eds. Designing organisations for satisfaction and  
efficiency. [Personnel Rev. Mon.]  
Farnborough [1978.] .658314 Leg.

LEGGE (MARY DOMINICA).

- Anglo-Norman in the cloisters; the influence of the  
orders upon Anglo-Norman literature. [Edin. Univ. Publ. Lang.  
& Lit. 2.]  
Edin., 1950. S.B. .447(01):.271(42)  
Leg.

LEGGE (MARY DOMINICA) [continued].

--- ed. Anglo-Norman letters and petitions from All Souls MS. 182.  
[Anglo-Norman Texts, 3.]

Oxford, 1941.

.8406 Ang.

--- Anglo-Norman literature and its background.

Oxford, 1963.

.447(01) Leg. †

--- Another copy.

French Lib.

---The significance of Anglo-Norman. [Lecture] delivered on ...  
26th November 1968. [Edin. Univ. Inaug. Lect. No. 38.]

[Edin., 1969.]

P .447(01) Leg.

--- Another copy.

Da.

--- ed. See BALIN, le Savage. Le roman de Balain.

--- joint-ed. See BENEDICT, St., Abbot of Monte Cassino. [Regula.]  
The Rule of St. B.; A Norman prose version.

LEGGE (THOMAS).

--- Richardus Tertius [a play in Latin verse.] See TRUE. The  
true tragedy of Richard the Third.

LEGGE (Sir THOMAS MORISON).

--- Industrial maladies. Ed. by S.A. Henry. [Oxford Med. Publ.]

Lond., 1934.

C.M.L.

--- Two other copies.

Soc. Med. Lib.

--- and GOADBY (KENNETH WELDON).

--- Lead poisoning and lead absorptinn; the symptoms, pathology and  
prevention ...

Lond., 1912.

F\* 7.68.

ADDITIONS

LEGGE (MARY DOMINICA).

--- Anglo-Norman literature and its background.

Oxford, 1963.

S.B. .447(01) Leg.

LEGGE (RAINE) Countess of Dartmouth. See DARTMOUTH (RAINE  
LEGGE, Countess of).

LEGGE (THOMAS).

--- T.L.'s Richardus Tertius. A critical ed. with a  
translation. [Ed. by] R.J. Lordi. [Renaissance Drama.]

New York, 1979.

.82239 Leg.



LEGGE (WILLIAM) Viscount Lewisham, 1st Earl of Dartmouth. See DARTMOUTH (WILLIAM LEGGE, 1st Earl of).

LEGGE (WILLIAM HENEAGE) 6th Earl of Dartmouth. See DARTMOUTH (WILLIAM HENEAGE LEGGE, 6th Earl of).

LEGGE (WILLIAM SEYMOUR).

--- See NORRIS (P.W.) and L.(W.S.)

LEGGE (WILLIAM WALTER) 5th Earl of Dartmouth. See DARTMOUTH (WILLIAM WALTER LEGGE, 5th Earl of).

LEGGET (ROBERT FERGUSON).

--- Cities and geology. With a foreword by Q. Zaruba.

New York [1973.] .55:.30136 Leg.

--- Another copy. Engin. Lib.

--- Another copy. Geol. Lib.

--- Geology and engineering. With a foreword by P.G.H.Boswell.

New York, 1939. Geol. Lib.

--- 2nd ed. [Int. Ser. in the Earth Sci.]

New York, 1962. Geol. Lib.

--- 2nd ed., repr.

New York [1967.] Engin. Lib.

--- Railroads of Canada. [Railroad Histories of the World.]

Vancouver [1973.] .3851(71) Leg.

--- Rideau Waterway. Rev. ed.

Toronto, 1972. .38646(7137) Leg.

[Continued overleaf.]

• ADDITIONS

LEGGET (ROBERT FERGUSON).

— Ottawa waterway; gateway to a continent.  
Toronto [1975.] .3863(7138) Leg.

— Canals of Canada. [Canals of the World.]  
Vancouver, 1976. Engin. Lib.

LEGGET (ROBERT FERGUSON) [continued].

--- ed. Soils in Canada. See ROYAL SOCIETY OF CANADA. SECTION IV.

--- Standards in Canada. (A study prepared for the Economic Council of Canada and the Science Council of Canada.)

Ottawa, 1971. Stat. Ref. .3896(71) Leg.

LEGGETT (BOBBY JOE).

--- The poetic art of A.E. Housman; theory and practice.

Lincoln, Nebraska [1978.]

.82191 Hou. Leg.

LEGGETT (JOHN C.).

--- Class, race, and labor; working-class consciousness in Detroit.

New York, 1968. .301444(77434) Leg.

--- New ed. [Galaxy Bk.]

Lond., 1971.

Politics Lib.

LEGGETT (WILLIAM F.).

--- Ancient and medieval dyes.

Brooklyn, N.Y., 1944. .63386:.6383 Leg.

LEGGEWIE (ROBERT).

--- See CLOUARD (HENRI) and L.(R.)

## ADDITIONS

LEGGETT (GEORGE).

--- The Cheka: Lenin's political police; the All-Russian Extraordinary Commission for Combating Counter-Revolution and Sabotage, December 1917 to February 1922.

Oxford, 1981.

.351742(470841) Leg.

LEGGETT (STANTON).

--- joint-author. Planning flexible learning places. See PLANNING flexible learning places.

LEGGETT (JEREMY K.).

--- ed. TRENCH-forearc geology; sedimentation and tectonics on modern and active plate margins. See TRENCH-forearc geology ...

LEGGO (WILLIAM).

--- The history of the administration of the... Earl of Dufferin, late Governor General of Canada.

Montreal, 1878.

.9(7105) Duf. Leg.

LEGH (Family of) of Lyme.

--- See BEAMONT (W.) ed. and tr. Warrington in 1465, as described in a contemporary rent roll of the Legh family.

LEGH (GEORGE).

[---] A letter to ... Mr. Stebbing; being remarks upon his late book relating to sincerity ... By a Christian.

Lond., 1718.

\*D.22.21/3.

\*\*\* The British Museum Catalogue attributes the authorship to Gilbert Dalrymple.

LEGH (MARY HELENA CORNWALL).

--- See MEATH (R. BRABAZON, Earl of), L. (M.H.C.) and JACKSON (E.)

LEGH (PETER).

--- Hints for an essay on anemology and ombrology ...

Lond. [1840?]

QP. 375/8.

--- The music of the eye, or, essays on the principles of the beauty and perfection of architecture as ... adapted to ... the ancient theories of taste, in the three first chapters of Vitruvius ...

Lond., 1831.

O.17.67.

LEGH (THOMAS).

--- Narrative of a journey in Egypt and the country beyond the cataracts.

Lond., 1816.

Yd.11.37.

--- 2nd ed.

Lond., 1817.

P.6.22.

LEGION pseud.

--- To the editor of the World [concerning the profligacy of the Prince of Wales, afterwards George IV, King of Great Britain]. Dec., 1791. See MILES (W.A.). To the Prince of Wales ...

LÉGION D'HONNEUR.

--- Annuaire officiel. Cet annuaire contient les noms de tous les membres de l'Ordre de la Légion d'Honneur au 1er avril, 1929.

Paris.

F .9297(44) Lég.

ADDITIONS

LEGHORN (LISA).

--- and PARKER (KATHERINE) *Artist.*

--- ~~Artist.~~ Woman's worth; sexual economics and the world of women.

Boston, 1981.

.396 Leg.

LEGIO VII Gemina. See INSTITUTO LEONÉS DE ESTUDIOS ROMANO-VISIGÓTICOS. Legio VII Gemina.

LEGIPONT (OLIVIER).

--- Monasticon Moguntiacum, sive succincta veterum monasteriorum in archi-  
episcopatu Moguntino ... notitia ...

[Prague] 1746.

RQ.5.65/1.

LEGISA (LINO).

--- Zgodovina slovenskega slovstva. Uredil L.L. s sodelovanjem A. Gspana.  
1-5.

Ljubljana.

.8918409 Leg.

1. Do začetkov romantike. (Napisali A. Gspan L.L., M. Matičetov,  
B. Merhar, M. Rupel in F. Tomšič.) 1956.
2. Romantika in realizem 1. 1959.
3. Realizem 2. 1961.
4. Nova struja, 1895-1900, in nadaljnje oblike realizma in  
naturalizma. 1963.
5. Obdobje moderne. 1964.

LEGITIMIST (THE) KALENDAR for ... 1910. Ed. by E.J. Foulds. 4th year of  
issue. [Royalist Club.]

Lond.

Bb.7.49.

LE GLAY (ANDRÉ JOSEPH GHISLAIN).

--- ed. See FRANCE. MINISTÈRE DES AFFAIRES ÉTRANGÈRES. Négociations  
diplomatiques entre la France et l'Autriche ...

LE GLAY (EDWARD).

--- ed. See RAOUL DE CAMBRAI. Li romans de Raoul de Cambrai.

LEGLAY (MARCEL).

--- Les Gaulois en Afrique. [Coll. Latomus, Vol. 56.]

Bruxelles, 1962.

.9(397:364) Leg.

[Continued overleaf.]

## ADDITIONS

LEGIŠA (LINO).

--- Zgodovina slovenskega slovstva. 6,-7.

Ljubljana.

.8918409 Leg.

6. V ekspresionizmu in novi realizem. 1969.

7. Slovstvo v letih vojne, 1941-1945.  
Spisal V. Smolej. 1971.



LEGLAY (MARCEL) [continued].

--- Saturne Africain; histoire. [Bibl. des écoles Fr. d'Athènes et de Rome.  
Fasc. 205.] Paris, 1966. .292211(397) Leg.

LEGLER (HENRY EDUARD).

--- Library ideals. By H.E.L. Comp. and ed. by his son, H.M. Legler.  
Chicago, 1918. .0201 Leg.

~~LEGLISE (PAUL).~~

~~The theatrical distribution of cultural films. See COUNCIL OF EUROPE.  
COUNCIL FOR CULTURAL CO OPERATION. The theatrical distribution ...~~

LEGMAN (GERSHON).

--- The horn book; studies in erotic folklore and bibliography.  
New Hyde Park [1964.] Scott. Stud. Lib.

--- 2nd pr. New Hyde Park, 1966. .398 Leg.

--- Pills to purge melancholy; a bibliographical note. (Repr. from Midwest  
Folklore, 1959, Vol. 9, No. 2.)

[Bloomington] 1959. P.0167848(42) Leg.

P.7548(4206) Leg.

--- See FRANKLIN (BURT) and L. (G.)

LEGNANO (GIOVANNI DA).

--- Tractatus de bello, de represaliis et de duello ... Ed. by T.E. Holland.  
(Tr. by J.L. Brierly.) [Class. of Inter. Law.]  
Oxford University Press, 1917. Law Lib.

LE GOBIEN (CHARLES).

--- Histoire des Isles Mariannes, nouvellement converties à la religion chrestienne  
... Paris, 1700. E.B. .2662(967) LeG.

## ADDITIONS

LEGLAY (MARCEL).

- Saturne africain; monuments. 2 tom.  
Paris. .913(397) Leg.
1. Afrique proconsulaire. [1961.]
  2. Numidie-Mauretanies. 1966.

LEGLER (JOHN B.).

- See LEVEN (CHARLES L.), L, (J.B.) and SHAPIRO (P.)

LEGMAN (GERSHON).

- The fake revolt.  
New York, 1967. Scott. Stud. Lib.

LEGNANI (MASSIMO).

- ed. Regioni e stato dalla Resistenza alla Costituzione.  
See CONVEGNO SU REGIONI E STATO DALLA RESISTENZA ALLA  
COSTITUZIONE, Milan, 1973.

LEGNER (ANTON).

- ed. Die Parler und der Schöne Stil, 1350-1400;  
europäischer Kunst unter den Luxemburgern ...  
Ausstellung des Schnütgen-Museums in der Kunststahle  
Köln. See SCHNÜTGEN MUSEUM, Cologne.
- ed. Monumenta Annonis ... [Catalogue of] eine Ausstellung des  
Schnütgens-Museums der Stadt Köln ... 1975. See SCHNÜTGEN-  
MUSEUM, Cologne.

LE GOFF (CÉLESTIN LOUIS).

- A photographer. See CHARTRES. CATHEDRAL. 34  
Notre-Dame de Chartres ... Introduction ... de M. le  
chanoine Delaporte. Photographies de C.L. Le G.

LE GOFF (JACQUES).

- L'apogée de la chrétienté, v. 1180 - v. 1330.  
[Paris] 1982. F .9(4017)01 LeG.
- La civilisation de l'Occident médiéval. [Coll. les Grandes  
Civilisations, Vol. 3.]  
Paris, 1965. .9(401) LeG.
- ed. Hérésies et sociétés dans l'Europe pré-industrielle, 11e-18e  
siècles. See COLLOQUE DE ROYAUMONT, 1962.
- Les intellectuels au moyen âge. [Le Temps Qui Court, 3.]  
Paris [1957.] .9(401)01 LeG.
- Marchands et banquiers du moyen âge. 3e éd., rev. [Que Sais-je?  
No. 699.]  
Paris, 1966. .382(401) LeG.
- Le moyen âge. Vol. 2. [Hist. Univ. 11.]  
Paris. .9(401)01 LeG.
2. 1060-1330. [1971.]
- La naissance du purgatoire. [Bibl. des Hist.]  
[Paris, 1981.] .2365 LeG.
- Pour un autre Moyen Age; temps, travail et culture en Occident.  
18 essais.  
[Paris, 1977.] French Lib.
- Time, work & culture in the Middle Ages. Tr. by  
A. Goldhammer.  
Chicago, 1980. .9(401)01 LeG.

[Continued overleaf.]

LE GOFF (JACQUES) [continued].

--- The town as an agent of civilisation, c.1200-c.1500. See  
CIPOLLA (CARLO MARIA) ed. The Fontana economic history of Europe.  
Vol. 1, chapter 2.

LE GOFFIC (CHARLES).

--- and THIEULIN (ÉDOUARD).

--- Nouveau traité de versification française, à l'usage des classes  
de l'enseignement secondaire ... 4e éd.

Paris, 1903.

French Lib.

LE GOFFIC (PIERRE).

--- See FUCHS (CATHERINE) and LE G. (P.)

LEGON (THE) OBSERVER. Vol. 1-

1966-

Legon.

C.A.S.

LE GONIDEC (JEAN FRANÇOIS MARIE MAURICE AGATHE).

--- Dictionnaire breton-français de le G., précédé de sa grammaire  
bretonne et enrichi ... des mots gallois et gaëls correspondants  
au breton par Th. Hersart de la Villemarqué.

Saint-Brieuc, 1850.

Ref. .4 Bre.

--- Another copy.

\*T.19.56.

--- Dictionnaire français-breton de Le G., enrichi d'additions et  
d'un essai sur l'histoire de la langue bretonne, par Th. Hersart  
de la Villemarqué.

Saint-Brieuc, 1847.

\*T.19.55.

--- Grammaire celto-bretonne.

Paris, 1807.

\*T.28.42/3.

[Continued overleaf.]

LE GONIDEC (JEAN FRANÇOIS MARIE MAURICE AGATHE) [continued].

--- Another copy.

C.R.17.5.18.

\*\*\* Cameron Collection.

--- Nouv. éd.

Paris, 1838.

C.R.4.1.6.

\*\*\* Cameron Collection.

LEGOUAS (FRANÇOIS MARIE VICTOR).

--- Nouveaux principes de chirurgie rédigés suivant le plan de l'ouvrage  
de G. de Lafaye, et d'après les principes des auteurs modernes ...

Paris, 1812.

H.13.14.

--- 3e éd.

Paris, 1817.

Yy.10.13.

LEGOUIS (ÉMILE).

--- The appeal of English letters to a French student. Being the twelfth  
Earl Grey Memorial Lecture delivered at King's Hall, Armstrong College,  
Newcastle-on-Tyne, February 24, 1930.

Oxford, 1930.

~~Bm.6.50.~~

P.82:84 Leg.

--- ed. Dans les sentiers de la Renaissance anglaise. Nouv. éd., rév. et  
augm.

Paris, 1955.

.821308 Leg.

--- Défense de la poésie française à l'usage des lecteurs anglais.

Lond., 1912.

O.S. .841 Leg.

--- Edmund Spenser. [Les Grands Écriv. Étrangers.]

Paris, 1923.

English Lib.

~~.92 Spe. Leg.~~

~~--- Another copy.~~

~~English Lib.~~

~~--- 2e éd.~~

~~Paris, 1923.~~

~~English Lib.~~

--- G.G. de Beaurieu et son Élève de la nature, 1763. [Taylorian Lect. 1925.]

Oxford, 1925.

.804 T.L.

--- Geoffroy Chaucer. [Les Grands Écriv. Étrangers.]

Paris, 1910.

O.S. .82117 Leg.

--- Another copy.

English Lib.

[Continued overleaf.]

LEGOUIS (ÉMILE) [continued].

--- Geoffrey Chaucer. Tr. by L. Lailavoix.

Lond., 1913.

\*T.3.61.

~~--- Another copy.~~

~~R.R.~~

~~--- Repr. Lond., 1928.~~

~~R.R. (English Lib.)~~

--- La jeunesse de William Wordsworth, 1770-98; étude sur le 'Prélude.'  
[Ann. de l'Univ. de Lyon.]

Paris, 1896.

O.S. .82171 Leg.

--- The early life of William Wordsworth, 1770-1798; a study of "The Prelude".  
Tr. by J.W. Matthews, with a prefatory note by L. Stephen. *2nd ed., with  
additional appendix.* Lond., ~~1897~~ 1921.

~~English Lib.~~  
*.82171 Leg.*

~~--- 2nd ed., with additional appendix.~~

~~Lond., 1921.~~

~~.82171 Leg.~~

--- A short history of English literature. Tr. by V.F. Boyson and J. Coulson.  
Repr., with corr.

Oxford, 1950.

English (For. Stud.) Lib.

--- Repr., with corr.

Oxford, 1953.

.8209 Leg.

--- Repr., with corr.

Oxford, 1956.

.8209 Leg.

--- A short parallel between French and English versification. The  
Presidential address for 1925-6. [Publ. Mod. Human. Res. Ass. 9.]

Cambridge, 1925.

P .4462 Leg.

--- Spenser.

Lond., 1926.

.82131 Leg.

[Continued overleaf.]

ADDITIONS

LEGOUIS (ÉMILE).

— Quomodo Edmundus Spenserus ad Chaucerum se fingens  
in eclogis 'The Shepheardes Calendar' versum heroicum  
renovarit ac refecerit. [Th. Faculté des Lettres de Paris.]  
Paris, 1896. JA 3520

--- A short history of English literature. Tr. by V.F. Boyson  
and J. Coulson. Repr. with corr.  
Oxford, 1961. English Lib.



LEGOUIS (ÉMILE) [continued].

--- William Wordsworth and Annette Vallon.

Lond., 1922.

.82171 Leg.

--- Another copy.

English Lib.

--- Wordsworth in a new light.

Cambridge [Mass.], 1923.

~~.92 Wor. Leg.~~

.82171 Leg.

--- Another copy.

~~English Lib.~~

.82171 Leg.

--- and CAZAMIAN (LOUIS).

--- Histoire de la littérature anglaise.

Paris, 1924.

English Lib.

--- A history of English literature. 2 vols.

Lond.

.8209 Leg.

1. The Middle Ages & the Renaissance, 650-1660. By E.L. Tr. ...  
by H.D. Irvine. 1926.

2. Modern times, 1660-1914. By L.C. Tr. ... by W.D. MacInnes ...  
and the author. 1927.

~~New ed. rev. and reset. Two volumes in one.~~

~~Lond. [1930.]~~

~~English Lib.~~

--- ~~Rev. ed. Repr.~~

Lond., 1948.

R.R. (English).

--- Rev. ed. Repr. with additional chapters.

Lond., 1954.

English Lib.

--- ~~Rev. ed. ... Repr. with rev. bibliographies. Further rev.~~

~~Lond., 1960.~~

~~R.R. (English).~~

ADDITIONS

LEGOUIS (ÉMILE).

--- William Wordsworth and Annette Vallon. Rev. and enlgd. ed.  
[Hamden] 1967. .82171 Leg.

LEGOUIS (PIERRE).

--- André Marvell; poète, puritain, patriote, 1621-1678. Reissue.  
New York, 1965. .82743 Leg.

--- Andrew Marvell; poet, puritan, patriot.  
Oxford, 1965. .82743 Leg.

~~--- Another copy. R.R. (English).~~

--- Donne the craftsman; an essay upon the structure of the Songs and  
sonnets.  
New York, 1962. .82735 Leg.

\*\*\* Photo-repr. of original (1928) ed.

LEGOUVÉ (ERNEST). See LEGOUVÉ (GABRIEL JEAN BAPTISTE ERNEST WILFRID).

LEGOUVÉ (GABRIEL JEAN BAPTISTE ERNEST WILFRID).

--- L'art de la lecture. Nouv. éd., revue et augm.  
Paris [1897.] O.S. .8085 Leg.

--- Soixante ans de souvenirs. 2 pts.  
Paris, 1886-[87?]. Zr.4.24<sup>1-2</sup>.  
\*\*\* Pt. 1 is 3<sup>e</sup> éd.; pt. 2 is 5<sup>e</sup> éd.

--- See SCRIBE (E.) and L. (G.J.B.E.W.)

LEGOUVÉ (GABRIEL MARIE JEAN BAPTISTE).

--- Le mérite des femmes, et autres poésies.  
Paris, 1813. Zs.12.116.

LEGOUX (L.).

--- An elegiac acrostick on the death of a friend [Luigi Schiavonetti].  
Lond., 1811. D\*25.35/8.

ADDITIONS

LEGOUIS (PIERRE).

--- Andrew Marvell; poet, puritan, patriot. 2nd ed.  
Oxford, 1968. English Lib.

--- Another copy. .82743 Leg.

~~--- Another copy. English Lib.~~

LÉGOUTIÈRE (EDMOND).

--- Le surréalisme. [Ensembles Litt.]  
Paris [1972.] .8409<sup>H</sup> Leg.

LEGOUX (P.).

- Esquisse géologique de l'Afrique Occidentale Française. Texte de conférences faites par P.L. [Fr. West Africa. Gouv. Gén. Bull. du Serv. des Mines. No. 4.]

Dakar, 1939.

Geog. Lib.

LEGRAIN (GEORGES).

- Louqsor sans les Pharaons; légendes et chansons populaires de la Haute Égypte, recueillies par G.L.

Bruxelles, 1914.

O.S. .3982(623) Leg.

--- and NAVILLE (EDMOND).

- L'aile nord du pylône d'Aménophis III à Karnak. [Ann. d. Mus. Guimet, XXX, 1.]

Paris, 1902.

LL.15.3.

LEGRAIN (JEAN BAPTISTE).

- Decade contenant la vie et gestes de Henry le Grand, roy de France ...

Rouen, 1633.

\*S.22.52.

LEGRAIN (LÉON).

- Archaic seal-impressions. With an introductory note by Sir L. Woolley. [Publ. of the Joint Exped. of the Brit. Mus. and of the Univ. Mus., Univ. of Pennsylvania, to Mesopotamia. Ur Excavations, Vol. 3.]

Oxford pr., 1936.

F .913(351) Bri.

- ed. Business documents of the third dynasty of Ur. 2 vols. [Publ. of the Joint Exped. of the Brit. Mus. and of the Univ. Mus., Univ. of Pennsylvania, to Mesopotamia. Ur Excav. Texts, 3.]

Lond. pr.

F .913(351) Bri.

1. Plates.

1937.

2. Indexes, vocabulary, catalogue, lists.

1947.

- Empreintes de cachets élamites. [Mission Archéol. en Iran, Mém. Tom. 16.]

Paris, 1921.

F .913(359) Mis.

[Continued overleaf.]

LEGRAIN (LÉON) [continued].

--- Seal cylinders. With an introductory note by Sir L. Woolley. [Publ. of the Joint Exped. of the Brit. Mus. and of the Mus. of the Univ. of Pennsylvania to Mesopotamia. Ur Excavations, Vol. 10.]

Oxford pr., 1951.

F .913(351) Bri.

LEGRAND (ALEXANDRE L.).

--- De l'or dans le traitement des scrofules. Premier mémoire ... précédé d'un rapport fait à l'Institut ...

Paris, 1837.

Bound in \*G.24.13.

--- De l'or, de son emploi dans le traitement de la syphilis ... et dans celui des dartres syphilitiques; du mercure ... 2<sup>e</sup> éd. précédée du rapport fait à l'Académie Royale des Sciences par M. le Professeur Magendie.

Paris, 1832.

\*H.26.51.

LE GRAND (ANTOINE).

[---] Les caractères de l'homme sans passions, selon les sentimens de Seneque. [Anon.]

Paris, 1665.

N.21.45.

--- A. Le G. dissertatio de carentia sensus & cognitionis in brutis.

Norimbergae, 1679.

E.B. .1513 LeG.

--- A. Le G. historia naturae, variis experimentis & ratiociniis elucidata ...

Lond., 1673.

\*L.23.76.

--- A. Le G. institutio philosophiae secundum principia D.R. Descartes. Nova methodo adornata & explicata ... Ed. tertia.

Lond., 1675.

~~Y.42.64.~~

E.B. .1949 LeG.

--- Another copy.

N\*23.68.

--- Ed. quarta. Lond., 1680.

N\*20.53.

[Continued overleaf.]

## ADDITIONS

LEGRAND (ANDRÉ).

— L'Ombudsman Scandinave; études sur le contrôle de l'administration. Préface de Roland Drago. [Bibl. de Sci. Administrative, Tom. II.]

Paris, 1970.

C.E.G.S.

LE GRAND (ANTOINE) [continued].

- An entire body of philosophy, according to the principles of the famous Renate Des Cartes. In three books ... Written originally in Latin ... now ... translated ... The whole work illustrated with almost an hundred sculptures ... by R. Blome.

Lond., 1694.

~~Yt. 1.27.~~  
E.B.F. 1949 Le G.

LEGRAND (E.).

- Méthode de stylistique française à l'usage des élèves. 6<sup>e</sup> éd. 448 Leg.  
Paris, 1946. French Lib.

- Stylistique française; livre du maître. 9<sup>e</sup> éd. .448 Leg.  
Paris, 1946. French Lib.

LEGRAND (ÉMILE).

- Bibliographie hellénique, ou description raisonnée des ouvrages publiés en grec par des Grecs au xv<sup>e</sup> et xvi<sup>e</sup> siècles. 2 tom. (in 1).  
Paris, 1885. Zt.2.21.

- Bibliographie hellénique, ou description raisonnée des ouvrages publiés par des Grecs au dix-huitième siècle. Œuvre posthume complétée et publ. par L. Petit et H. Pernot. Tom. 1-2.  
Paris, 1918-28. .015(495) Leg.

- [Bibliographie hellénique ... au dix-huitième siècle.] 'Ελληνική βιβλιογραφία: συμβολή στο δεκάτο όγδοο αιώνα, Γ.Γ. Λαδά και 'Α.Δ. Χατζηδημου. Προσθηκές διορθώσεις και συμπληρώσεις στην 'Ελληνική βιβλιογραφία των Ε.Λ., L. Petit και H. Pernot. [Έκδοσεις του περιοδικού "Συλλεκτής", 'Αριθ. 1, 1964.]  
'Αθήνα, 1964. .015(495) Leg.

- ed. Bibliothèque grecque vulgaire. Tom. 1-7, 9.  
Paris, 1880-1902. W\*1.18-26.

- Another copy. Tom. 1. Yt.5.47.

[Continued overleaf.]



LEGRAND (ÉMILE) [continued].

--- ed. and tr. Chansons populaires grecques, publiées avec une traduction française et des commentaires historiques et littéraires. (Spécimen d'un recueil en préparation.) [Romaic and Fr.]

Paris, 1876.

Bl.Coll.6.33/2.

--- ed. and tr. Δημοτικά τραγούδια ... [Mod. Gr. and Fr.] [Legrand, Coll. de mon. pour servir à l'étude de la lang. néo-hell. 12.]

'Αθηνησιν, αωο [1870].

Bl.Coll.3.2/2.

--- ed. and tr. Recueil de chansons populaires grecques ... [Mod. Gr. and Fr.] [Legrand, Coll. de mon. pour servir à l'étude de la lang. néo-hell. Nouv. sér. 1.]

Paris, 1874.

Bl.Coll.2.29.

--- Another copy.

S.15/1.8.

--- Another copy.

L.A.B. .3988(495) Leg.

\*\*\* Lord Abercromby Bequest.

--- ed. Recueil de poèmes historiques en grec vulgaire, relatifs à la Turquie ... Publ., tr. et annotés par E. Legrand. [L'École des Langues Orient. Vivantes Publ. 5.]

Paris, 1877.

~~O.S. 8894 Leg~~  
889108 Leg.

--- ed. and tr. Tragudia ke paramythia tis Kalabrias ... [Gr. & Fr.] [Legrand, Coll. de mon. pour servir à l'étude de la lang. néo-hell. 14.]

Athinisin, 1870.

Bl.Coll.3.1/7.

--- and PERNOT (HUBERT).

--- eds. Chrestomathie grecque moderne.

Paris, 1899.

Zt.8.61.

LE GRAND (HARRY E.).

--- See STRINGFIELD (VICTOR TIMOTHY) and LE G. (H.E.)

## ADDITIONS

LEGRAND (GÉRARD).

--- La pensée des Présocratiques. [Pour Connaître la Pensée.]  
[Paris, 1970.] .182 Leg.

--- André Breton en son temps.  
Paris [1976.] .84191 Bre. Leg.

LEGRAND (IGNACE).

--- Le train de l'ambassade.  
Lond., 1944. S.B.P .84391 Leg.

LE GRAND (JACQUES). See MAGNI (JACOBUS).

LEGRAND (JACQUES GUILLAUME).

--- Essai sur l'histoire générale de l'architecture ... pour servir de texte explicatif au Recueil et parallèle des édifices de tout genre ... remarquables par leur beauté ... ou leur singularité, par J.N.L. Durand ... Nouv. éd. ... augmentée d'une notice historique sur J.G.L. [by C.P. Landon], avec portrait.

Paris, 1809.

Bound in O\*27.33.

--- Another ed.

Bruxelles, 1842.

I\*15/2.46.

\*\*\* This ed. does not contain the 'Notice historique sur J.G. Legrand.'

--- and LANDON (CHARLES PAUL).

--- Description de Paris et de ses édifices, avec un précis historique et des observations sur le caractère de leur architecture ... Ouvrage enrichi de plus de cent planches ... [continued successively by A.C. Quatremère de Quincy and N. Goulet.] 2 tom.

Paris, 1808.

\*P.28.36-37.

LEGRAND (JEAN BAPTISTE). See LEGRAND D'AUSSY (PIERRE J.B.).

LEGRAND (JEAN FRANÇOIS).

--- Dissertationes philosophicae et criticae. In Epicuream philosophiam Gassendi. De abditioribus rerum naturalium causis contra Campanellam. De variis Dei nominibus ... Solutio duorum aenigmatum Hippocratis et Martiani Capellae. (And Discours oratoires, et dissertations critiques.) 3 pts. (in 1).

Parisiis, 1658, 57.

N\*20.50.

\*\*\* The pagination of the first part runs 1-165, 64-181.

--- Another copy.

N\*20.49.

LE GRAND (JOACHIM).

--- [Histoire du divorce de Henry VIII, roy d'Angleterre.] See BURNET (GILBERT) Bp. A letter to Mr. Thevenot, containing a censure of Mr. Le Grand's History of King Henry the Eighth's divorce.

[Continued overleaf.]

LE GRAND (JOACHIM) [continued].

--- See LOBO (J.). A voyage to Abyssinia ... With a continuation of the History of Abyssinia ... and fifteen dissertations ... by Mr. Le Grand.

LEGRAND (LOUIS DÉSIRÉ).

[---] La Révolution française en Hollande; La République Batave. [Anon.]  
Paris, 1894. .9(49205) Leg.

LE GRAND (MARC ANTOINE).

--- See FUZELIER (L.) and LE G. (M.A.)

LEGRAND (MAXIME).

--- La vallée du Nil ... Paris [1892.] Zq.8.52.

LEGRAND (PHILIPPE E.).

--- ed. and tr. Bucoliques grecs. Texte établi et traduit par Ph. E.L.  
[Gr. and Fr.] 2 tom. [Coll. des Univ. de France.]  
Paris. ~~.8846~~ <sup>.88408</sup> Leg.

1. Théocrite. 1925.

2. Pseudo-Théocrite, Moschos, Bion, divers. 1927.

--- The new Greek comedy. Κωμωδία νέα ... Tr. by J. Loeb. With an  
introd. by J.W. White. Lond., 1917. ~~.8826~~ <sup>.882</sup> Leg.

--- La poésie alexandrine. [Coll. Payot.]  
Paris, 1924. .88109 Leg.

LE GRAND (YVES).

--- Optique physiologique. 3 tom. (in 2).  
Paris. Physiol. Lib.

[Continued overleaf.]

ADDITIONS

LE GRAND (JULIAN).

--- The strategy of equality; redistribution and the social services.

Lond., 1982. .3616(42) Leg.

--- Another copy. .3616(42) Leg.

--- 2nd impr.

Lond., 1983. Politics Lib.

--- and ROBINSON (RAY).

--- The economics of social problems.

Lond., 1976. .33:.36 Leg.

--- 2nd ed. The economics of social problems; the market versus the state.

Lond., 1984. .33:.36 Leg.

LE GRAND (YVES) [continued].

1. La dioptrique de l'oeil et sa correction. 2<sup>e</sup> éd., revue et  
augm. 1952.
2. Lumière et couleurs. [1948.]
3. L'espace visuel. Préface de J. Becquerel. 1956.

--- [Optique physiologique. Tom. 2.] Light, colour and vision. Approved  
translation by R.W.G. Hunt, J.W.T. Walsh, F.R.W. Hunt.

Lond., 1957. .61284 LeG.

--- Another copy. Architect. Lib.

--- Another copy. Psychol. Lib.

--- 2nd ed. Lond., 1968.

*Machine Intelligence Lib.*  
~~Engin. Lib.~~

~~--- Another copy.~~

~~Machine Intelligence  
& Perception Lib.~~

--- Another copy. Psychol. Lib.

--- [Optique physiologique. Vol. 3.] Form and space vision. Rev. ed.  
Tr. by M. Millodot and G.G. Heath.

Bloomington [1967.] .61284 Le G.

--- Another copy. Psychol. Lib.

LEGRAND D'AUSSY (PIERRE JEAN BAPTISTE).

--- Fabliaux ou contes du xii<sup>e</sup> et du xiii<sup>e</sup> siècle, fables et romans du  
xiii<sup>e</sup>, traduits ou extraits d'après d'après plusieurs manuscrits du  
tems; avec des notes ... Nouv. (seconde) éd., augmentée d'une  
dissertation sur les troubadours. 5 tom.

Paris, 1781. F\* 33.80-84.

[Continued overleaf.]

LEGRAND D'AUSSY (PIERRE JEAN BAPTISTE) [continued].

— Fabliaux or tales, abridged from French manuscripts of the xiith and xiiith centuries by M. Le G. Selected and translated into English verse by ... G.L. Way. With a preface, notes, and appendix by ... G. Ellis. New ed. corrected. 3 vols.

Lond., 1815.

S\* 30.31-33.

— Histoire de la vie privée des français ... 1<sup>e</sup> partie. 3 tom.

Paris, 1782.

\*F.30.39-41.

— See PARTÉNOPEUS DE BLOIS. Partenopex de Blois ... Freely translated from the French of M. Le Grand ... by W.S. Rose.

— See WILSON (GEOFFREY). A medievalist in the eighteenth century; Le Grand d'Aussy and the Fabliaux ou contes.

LEGRAND DU SAULLE (HENRI).

--- Le délire des persécutions.

Paris, 1871.

\*F.6.22.

--- La folie devant les tribunaux.

Paris, 1864.

F\*4.35.

LEGRAND-LANE (RAYMOND).

--- See PFLIMLIN (PIERRE) and L.-L. (R.)

LE GRAS ( - ).

--- La rethorique françoise, ou, les preceptes de la vraye eloquence,  
accommodez à l'usage des conversations, du barreau, & de la chaire ...  
2e éd. rev., corr. & augm. du Traité de la bienséance.

Paris, 1674.

E.B. .845 LeG.

LEGRAS (CHARLES).

--- Chez nos contemporains d'Angleterre.

Paris, 1901.

\*M.13.90.

LE GRAS (JOSEPH).

--- Diderot et l'Encyclopédie. 5e ed. [Grands Événements Litt. Sér. 1.]

Amiens, 1928.

.1945 LeG.

--- Another copy.

.1945 LeG.

--- Another copy.

French Lib.

LEGRAS (JULES).

--- Henri Heine; poète.

Paris, 1897.

~~Gibson Lib.~~  
83175 Leg.

--- Mémoires de Russie. 2 mille. [Coll. de Mém., Étud. et Doc. pour servir  
à L'Hist. de la Guerre Mondiale.]

Paris, 1921.

.9(4708) Leg.



LEGRAS (LUDOVICUS PETRUS JOSEPHUS).

- An auscultatio intermedia seu stethoscopia percussione thoracis aliisque explorandi modis praestantior. [Th.]  
Parisiis, 1824. QP. 877/7.

LEGRELLE (ARSENE).

- L'acceptation du testament de Charles II, roi d'Espagne, par Louis XIV.  
Gand, 1892. Q.4.58/1.

- Les conférences secrètes de Diessenhofen et Steckborn (1694).  
Braine-le-Comte, 1893. Q.4.58/3.

- La diplomatie française et la succession d'Espagne. 4 tom.  
Gand, 1888-92. Yq.7.29<sup>1-4</sup>.

- 2<sup>e</sup> éd. Tom. 6. La paix (1710-1725).  
Braine-le-Comte, 1899. Q.4.57.

\*\*\* Nearly all the copies of tom. 1-5 were destroyed by a fire at the printers. Much of the additional matter in the 2nd ed. is contained in the pamphlets bound along with the 'L'acceptation du testament de Charles II, roi d'Espagne, par Louis XIV.'

- L'Europe en 1713 après la guerre de la succession d'Espagne.  
Braine-le-Comte, 1897. Q.4.58/7.

- Louis XIV et Strasbourg; essai sur la politique de la France en Alsace, d'après les documents officiels et inédits. 4<sup>e</sup> éd.  
Paris, 1884. Zq.7.1.

- La mission de M. de Rébenac à Madrid, et la mort de Marie-Louise, reine d'Espagne (1688-1689).  
Paris, 1894. Q.4.58/5.

- Une négociation inconnue entre Berwick et Marlborough, 1708-1709.  
Gand, 1893. Q.4.58/4.

- Le régiment de Normandie pendant la guerre de la succession d'Espagne.  
Rouen, 1893. Q.4.58/2.

LEGRELLE (ARSENE) [continued].

--- La révolte des Camisards.

Braine-le-Comte, 1897.

Q.4.58/6.

LE GRICE (CHARLES VALENTINE).

[---] Conversations at Cambridge. [Anon.]

Lond., 1836.

Zv.12.67.

LEGRIS (P.).

--- La végétation de l'Inde; ecologie et flore. [Inst. Fr. de Pondichéry,  
Sect. Scient. et Tech. Trav. Tom. 6, 1963.]

Pondichéry [1963.]

.5815(54) Leg.

LEGRO (R.A.H.).

--- See DOORENBOS (J.) and L. (R.A.H.)

LEGROS (E.).

--- See HAMILTON (H. <sup>ENRY</sup>) and L. (E.)

*Teacher of English*

LEGROS (JACQUES).

--- See DESROSIERS (LUCE) and L. (J.)

~~LEGROS (LUCIEN ALPHONSE).~~

~~--- Les chars d'assant et le matériel à chenilles. [Extrait des Mémoires de  
la Soc. des Ingénieurs Civils de France. Bull. de juillet-septembre, 1924.]~~

~~Paris, 1921.~~

~~Engin. Lib.~~

~~--- Fracture of axles originating in drilled holes. [Excerpt from minutes  
of Proc. of the Instit. of Civil Engineers, 1905-06, Part 2.]~~

~~Lond., 1906.~~

~~Engin. Lib.~~

[Continued overleaf.]

ADDITIONS

LE GRIS (CLAUDE).

--- L'entrée du Canada sur la scène internationale, 1919-1927.  
Préface de J.W. Holmes.

Paris, 1966.

.327(71061-062) Leg.

LEGROS (ELISÉE).

--- See MÉLANGES DE FOLKLORE ET D'ETHNOGRAPHIE DÉDIÉS À LA  
MÉMOIRE D'E.L.

LEGROS (HENRI).

--- See DORSCH (HANS J.) and L. (H.)

LEGROS (LUCIEN ALPHONSE) [continued].

- ~~--- The influence of detail on the development of the automobile. [Excerpt  
from Proc. of the Instit. of Automobile Engineers, 1911-12.]~~  
~~Lond. [1911-12.]~~ ~~Engin. Lib.~~
- La meilleure utilisation de l'effort humain et la fatigue industrielle.  
[Extr. des Mém. de la Soc. des Ingén. Civ. de France ... 1926.]  
Paris, 1927. Engin. Lib.
- A note on the legibility of printed matter; prepared for the information  
of the Committee on Type Faces. 2nd ed.  
Lond., 1922. P .65524 Leg.
- ~~--- Presidential address. [Instit. of Automobile Engineers, Oct., 1916.]~~  
~~[Lond.] 1916.~~ ~~Engin. Lib.~~
- La production industrielle et l'habileté de l'ouvrier. [Extrait des  
Mém. de la Soc. des Ingénieurs Civils de France. Bull. de Sept.-Oct.  
1925.]  
Paris, 1926. P. 331204/1  
P. 331114 658 Leg.  
P. 331114 Leg.
- Skill - in relation to production. [Soc. des Ingénieurs Civils de  
France. Pres. address, 1925.]  
Lond. [1925.] P. 3317.658 Leg.  
P. 331114 Leg.
- Tanks and chain-track artillery. Pts. 1-2. [Repr. from the Automobile  
Engineer, Mar.-April, 1922.]  
Lond., 1922. F .6204/1
- Technical and non-technical management. [Soc. des Ingén. Civ. de France,  
Brit. Sect. 19th Ord. Gen. Meeting ... 1927.]  
Lond. [1927.] Engin. Lib.
- Traction across country. [Repr. from Engineering, Feb.-Mar., 1924.]  
Lond., 1924. F .6204/1

[Continued overleaf.]

LEGROS (LUCIEN ALPHONSE) [continued].

~~--- La traction hors route. [Extrait des Mémoires de la Soc. des Ingénieurs  
Civils de France, Bull. jan.-mars, 1924.]~~

~~Paris, 1924.~~

~~Engin. Lib.~~

~~--- Traction on bad roads or land, with ... discussion on Mr. A. Amos' paper  
on Utility of motor tractors for tillage purposes. [Excerpt from minutes  
of proc. ... of the Instit. of Mechanical Engineers, Jan. and Feb. 1916.]~~

~~Lond., 1916.~~

~~Engin. Lib.~~

~~--- The transmission of power from the engine to the road wheels in motor  
vehicles. [Paper ... read ... at Instit. of Mechanical Engineers, 1909.]~~

~~Lond., 1909.~~

~~Engin. Lib.~~

~~--- Typecasting and composing machinery. [Excerpt from minutes of proceedings  
of ... the Institution of Mechanical Engineers ... Dec., 1908.]~~

~~Lond. [1908.]~~

~~Engin. Lib.~~

~~--- The use of pressed steel in automobile construction. [Paper ... read ...  
at the Instit. of Mechanical Engineers, 1911.]~~

~~Lond., 1911.~~

~~Engin. Lib.~~

--- and ECKENSTEIN (O.).

--- Technical vocabulary. (Excerpt from Typographical printing-surfaces by  
L.A. Legros and J.C. Grant.)

Lond., 1915.

~~P. 65503 Leg.~~

P. 655303 Leg.

--- and GRANT (JOHN CAMERON).

--- Typographical printing surfaces; the technology and mechanism of their  
production.

Lond., 1916.

.6553 Leg.

LE GROS (W.B.).

--- Fables and tales [in verse], suggested by the frescoes of Pompeii and  
Herculaneum.

Lond., 1835.

\*S.26.1.

LE GROS CLARK (WILFRED EDWARD). See CLARK (WILFRED EDWARD LE GROS).

LEGROUX (ALEXIS CHARLES).

--- De l'aphasie. [Th.]

Paris, 1875.

Bound in G.1.22.

LE GRYS (Sir ROBERT).

--- tr. See BARCLAY (JOHN) Poet. J.B. his Argenis.

LEGTTERS (LYMAN HOWARD).

--- ed. Russia; essays in history and literature.

Leiden, 1972.

.891704 Leg.

LEGUAT (FRANÇOIS).

--- A new voyage to the East-Indies by F.L. and his companions ...  
[Tr. from the French.]

Lond., 1708.

P.21.32.

--- The voyage of F.L. ... to Rodriguez, Mauritius, Java, and the  
Cape of Good Hope ... Ed. and annotated by Captain Pasfield Oliver.  
2 vols. [Hakluyt Soc. 82-83.]

Lond., 1891.

RP.

--- Another copy. 2 vols.

RP.

LEGUAY (JEAN PIERRE).

--- La ville de Rennes au XVme siècle à travers les Comptes des  
Miseurs. [Th., Rennes, 1968.] [Univ. de Rennes, Fac. des Lett.  
et Sci. Hum. Publ.; Inst. Armoricaïn de Recherches Hist. de  
Rennes, Publ. No. 8.]

Paris [1970.]

.9(4487)01 Leg.

LE GUERN (MICHEL).

--- Sémantique de la métaphore et de la métonymie. [Lang. et Langage.]  
Paris [1973.] .444 LeG.

LEGUETTE (SERGE PIERRE).

--- L'avocat dans les 9 états de la Communauté européenne.  
Préface de L.-E. Pettiti.  
Versailles, 1978. C.E.G.S.

LE GUILLOU (LOUIS).

--- L'évolution de la pensée religieuse de Félicité Lamennais.  
Paris, 1966. .84471 LeG.

LE GUILLOU (MARIE-JOSEPH).

--- Mission et unité; les exigences de la communion. 2 vols.  
[Unam Sanctam, 33-34.]  
Paris, 1960. New Coll. Lib.

LE GUIN (CHARLES A.).

--- Roland de La Platière, a public servant in the eighteenth century.  
[Trans. of the Amer. Philos. Soc. N.S. Vol. 56, pt. 6.]  
Philadelphia, 1966. F .06(73) Ame.

LE GUIN (URSULA KROEBER).

--- The farthest shore. Repr. [Puffin Bks.]  
Harmondsworth, 1979. .8135 LeG.

--- The left hand of darkness. Repr. [Panther Bks.]  
St. Albans, 1977. .8135 Leg.

--- The tombs of Atuan. Repr. [Puffin Bks.]  
Harmondsworth, 1978. .8135 LeG.

ADDITIONS

LE GUIN (URSULA KROEBER).

— A wizard of Earthsea. Drawings by R. Robbins. Repr.  
[Puffin Bks.]

Harmondsworth, 1980. .8135 Le G.



LEGUM (COLIN).

- ed. Africa; a handbook to the continent.  
Lond., 1961. .9(6) Leg.
- Rev. and enlgd. ed. Africa; a handbook.  
Lond., 1965. Main Ref. .9(6) Leg.
- 2nd rev. and enlgd. ed., repr. [Hdbks. to the Mod. World.]  
Lond., 1967. Law Lib.
- joint-ed. Africa contemporary record. See AFRICA CONTEMPORARY RECORD.
- Bandung, Cairo and Accra; a report on the first Conference of  
Independent African States. [Africa Bur.]  
[Lond.] 1958. C.A.S.
- Congo disaster. [Penguin Special, 191.]  
Harmondsworth, 1961. .9(675) Leg.
- Another copy. C.A.S.
- Pan-Africanism; a short political guide.  
Lond., 1962. C.A.S.
- Another copy. C.A.S.
- [New ed.] 2nd pr. [Praeger Paperbacks, PPS-82.]  
New York, 1963. C.A.S.
- Rev. ed., 2nd pr. [Praeger Paperbacks, PPS-82.]  
New York, 1965. Law Lib.
- Another copy. Politics Lib.

[Continued overleaf.]

ADDITIONS

LEGUM (COLIN).

--- joint-author. Africa in the 1980s. See AFRICA in the 1980s.

--- Pan-Africanism; a short political guide. Rev. ed.  
Lond., 1965. .320159(6) Leg.

--- Ethiopia; the fall of Haile Selassie's empire.  
[Current Affairs Ser.]  
Lond., 1975. C.A.S.

--- Vorster's gamble for Africa; how the search for peace failed.  
Lond., 1976. C.A.S.

--- Another copy. .9(6806) Leg.

--- and HODGES (TONY).

--- After Angola; the war over Southern Africa...  
Lond., 1976. C.A.S.

LEGUM (COLIN) [continued].

--- and LEGUM (MARGARET ROBERTS, afterwards Mrs.).

--- South Africa; crisis for the West. [Pall Mall World Aff. Special  
Ser. Vol. 2.] Lond., 1964. .9(6805) Leg.

--- Another copy. C.A.S.

--- Another copy. Politics Lib.

LEGUM (MARGARET ROBERTS, afterwards Mrs.).

--- Labour in the farm economy. [South African Inst. of Race Rel.]  
Johannesburg, 1958. .33169(687) Leg.

--- [2nd ed.] Johannesburg, 1959. C.A.S.

--- See LEGUM (COLIN) and L. (M.R.) afterwards Mrs.

ADDITIONS

LEGVOLD (ROBERT H.).

--- Soviet policy in West Africa.

Cambridge, Mass., 1970. C.A.S.