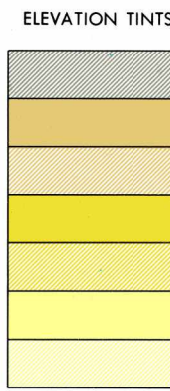


SERIES 1501 AIR SHEET ND 48-4 EDITION 5



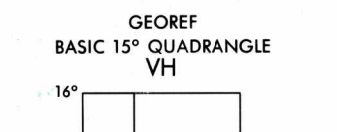
RELIABILITY OF THIS GRAPHIC CREDIBILITY DE CETTE GRAPHIQUE

Table with 3 columns: PLOTTING ACCURACY, AREA I, AREA II. Includes details on horizontal and vertical accuracy, graphic features, and road classification.



GLOSSARY - GLOSSAIRE

- List of geographical features and their symbols: A, An, Ap (village); Bôn (village); D, Dak (cours d'eau); Houay, Houei (cours d'eau); Khô (ruisseau); Khoueng (subdivision); Kon (premier division); Lâng (village); Nam (cours d'eau); Nong (pônd); Ngon (montagne); Nu (cours d'eau); Phou, Pou (montagne); Sé (fleuve, rivière); Sông (cours d'eau); Tãm (rivière); Tinh (subdivision); Xa, Xé (rivière).



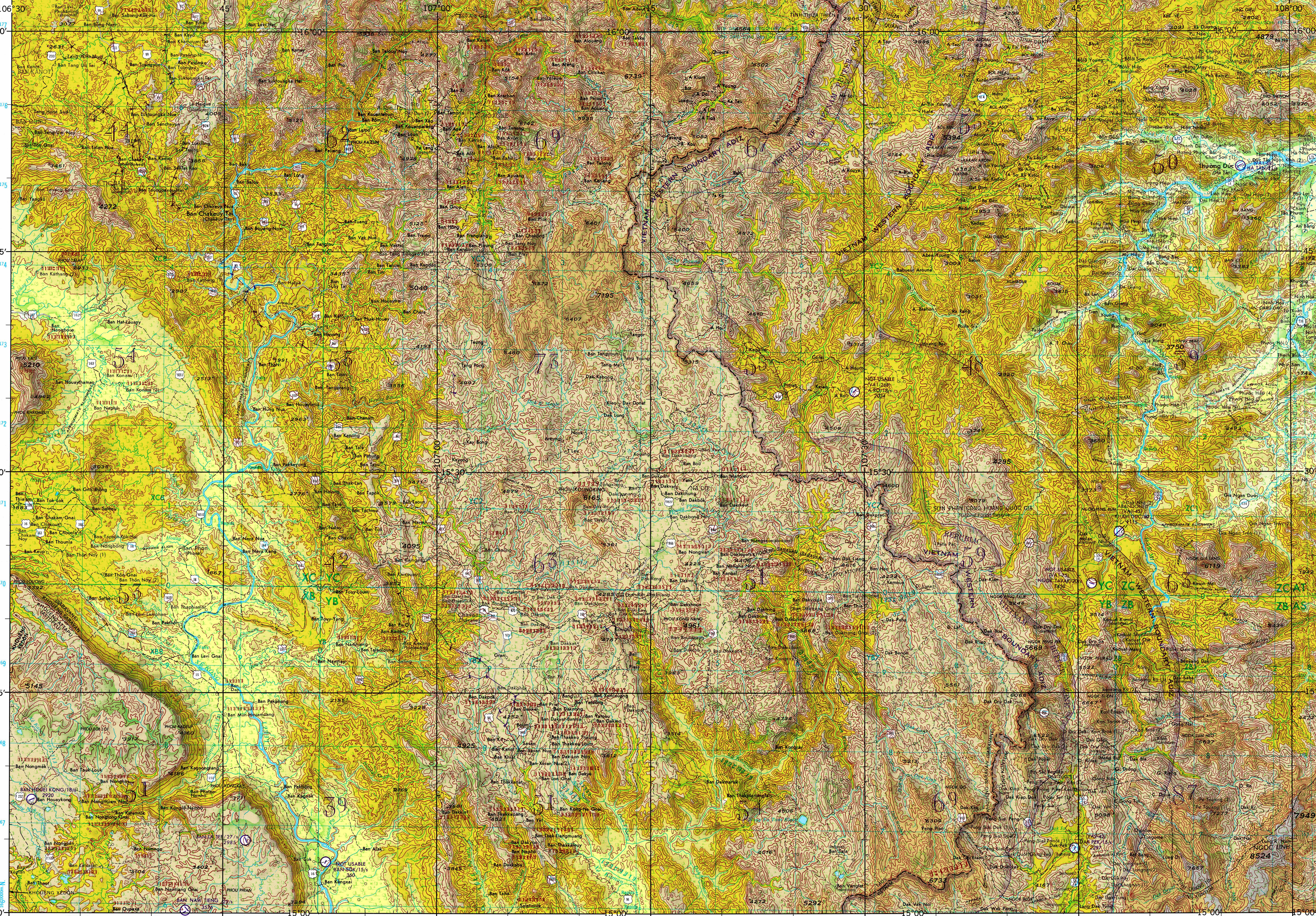
AIR INFORMATION CURRENT THROUGH 10 AUGUST 1972

MAGNETIC VARIATION FOR 1970 IS APPROXIMATELY 0°15' EASTERN OVER THE ENTIRE AREA

DISTRIBUTION RESTRICTED: SEE DOD MAP OR CHART CATALOG FOR GUIDANCE ON RELEASE OUTSIDE THE U. S. GOVERNMENT.

SCALE 1:250,000 CHAVAN, LAOS; VIETNAM

SERIES 1501 AIR SHEET ND 48-4 EDITION 5

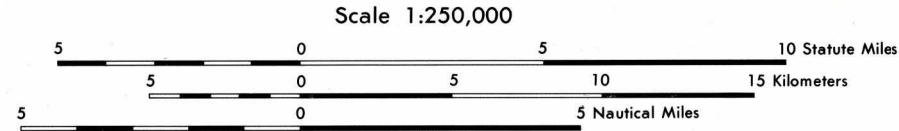


Prepared and published by the Defense Mapping Agency Topographic Center, Washington, D. C. Compiled August 1972.

ELEVATIONS IN FEET COTES EXPRIMEES EN PIEDS

- ROADS ROUTES: All weather, hard surface; surface douce, par route saison; Two or more lanes; One lane; Loose surface; surface meuble, par route saison; Two or more lanes; Two lanes; One lane. Includes symbols for cart track, trail, and railway.
- BOUNDARIES LIMITES: International; Primary administrative subdivision; Church, school, temple, pagoda; Spot elevation; normal; critical; Swamp or marsh; Rice; Marais ou marécage; Rizière; Woods; Bois.

JOINT OPERATIONS GRAPHIC (AIR)



CONTOUR INTERVAL APPROXIMATELY 330 FEET WITH SUPPLEMENTARY CONTOURS AT 165 FOOT INTERVALS

USERS ARE URGED TO REFER CORRECTIONS AND COMMENTS FOR INCREASING THE USEFULNESS OF THIS GRAPHIC TO: (US USERS) DIRECTOR, DEFENSE AGENCY AEROSPACE CENTER, ST. LOUIS, MISSOURI, 63118; (UK USERS) DIRECTORATE OF MILITARY SURVEY, MINISTRY OF DEFENCE, LONDON.

ELEVATIONS IN FEET COTES EXPRIMEES EN PIEDS

- AERODROMES (Military or Civil): EDNA/50/4; AERODROMES (Military or Civil): EDNA/75/5. Includes symbols for runway patterns, field limits, and sea-plane base.
- SEAPLANE BASE: B&D HYDRATIONS; SEAPLANE (EMERGENCY) HYDRATION (SECOURS).
- HELIPORT HELIPORT: Symbol for heliport.
- RADIO FACILITIES: RADIO RANGE U/F/M; MULTIPLE RADIO FACILITIES.

CONTROLLED AIRSPACE ATLANTIC ADIZ

- VISUAL AIDS AND OBSTRUCTIONS: 1108; Obstruction: 1108 (259). Includes symbols for radio facility, power transmission line, sea-plane base, and visual ground sign.
- TERRAIN ELEVATIONS - ALTITUDES DU TERRAIN: HIGHEST KNOWN elevation is 8524 feet at 15°04'N, 107°59'E.

HIGHEST TERRAIN elevations for each 15 MINUTE QUADRANGLE are represented in THOUSANDS and HUNDREDS of feet.

NOTES - NOTES: No obstructions 200 feet or more above ground level are known to exist in this area. THE REPRESENTATION OF INTERNAL BOUNDARIES IS NOT NECESSARILY AUTHORITY.

SERIES 1501 AIR SHEET ND 48-4 EDITION 5