

Table of Contents

Acknowledgments	vi
Factors Applicable to Usage	vii
Introduction	ix
Maps of Long Island Estate Areas	xviii
Surname Entries A – Z	1
<i>Appendices:</i>	
Architects	533
Civic Activism	539
Estate Names	549
Golf Courses on Former Town of Hempstead Estates	555
Landscape Architects	557
Maiden Names	561
Occupations	591
Rehabilitative Secondary Uses of Surviving Estate Houses	613
Statesmen and Diplomats Who Resided in the Town of Hempstead	615
Village Locations of Estates	619
America's First Age of Fortune: A Selected Bibliography	629
Selected Bibliographic References to Individual Town of Hempstead Estate Owners	639
Biographical Sources Consulted	647
Maps Consulted for Estate Locations	649
Illustration Credits	651

Introduction

The Town of Hempstead, for the most part, is located on the only plain east of the Appalachian Mountains. The boundaries of the approximately sixty thousand-acre Hempstead Plains roughly corresponds in the North to the present-day villages of New Hyde Park, Garden City, Garden City Park, Mineola, Carle Place, Westbury, and New Cassel; Sunrise Highway to the South; and from eastern Queens County in New York City to just east of the Nassau/Suffolk County border.¹ When early settlers first viewed the Plains in its pristine state, they saw a level topography, generously interspersed with small streams. Virtually treeless, it was instead covered by five- to six-foot-high grasses and a profusion of wildflowers.

As early as the 1600s the Plains had been designated as a commons to be used by all primarily for haying and as grazing land for cattle. It was not until 1784, when the Town of North Hempstead separated from the Town of Hempstead, that land was assigned to individual farmers and the cultivation of the Plains began in earnest. The scattered farms interspersed among the equally scattered villages gradually developed into thriving communities. Suburbanization, industrialization, and ultimately urbanization have created that which we see today.²

Flat and, for the most part, unobstructed by trees, the Hempstead Plains was conducive to the early introduction of sporting events. In 1665 Governor Richard Nicolls established the New Market Race Course, the country's first formal race track, in the northwestern section of the Town of Hempstead. Continued interest in horseracing led to the establishment of Belmont Park Racetrack in 1905 and Roosevelt Raceway in 1940.³

Hunting was formalized as a sport when in 1877 Robert Center, William C. Peet, August Belmont Purdy, and Frank Gray Griswold rented a farm from the heirs of Alexander Turney Stewart and established the Queens County Drag Hounds Club just east of Garden City on land that would later become Mitchel Field. In 1880 the club moved to Westchester County for two years after which it returned to the Island following its merger with the Rockaway Hunting Club.

In 1880 the Meadow Brook Hunt Club was organized on the future Mitchel Field site thus enabling the Rockaway Hunting Club, which had been established in 1878 in Far Rockaway by J. D. Ceever, Louis Neilson, George Work, Ernest C. La Montagne, Rene La Montagne, Edward Nicoll Dickerson, and William Voss, to lay claim to being the oldest country club in the United States in continuous use.⁴

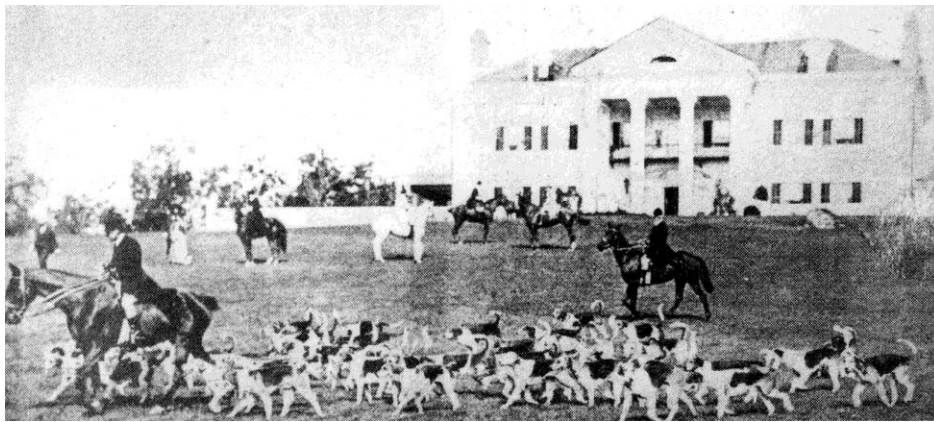
The problems encountered by the two clubs were legendary. The rapid development of Far Rockaway and the lack of adequate numbers of foxes in the area, which had plagued the Rockaway from its inception, induced the club



Rockaway Hunting Club

to relocate to its present site in Lawrence in 1884.⁵ The dramatic increase in both residential and commercial development was a constant concern to both clubs resulting in the secession of hunting at the Rockaway by 1920.⁶

The Meadow Brook chose to relocate their hunting activities to the Jericho area. However, even here they would face similar difficulties when Robert Moses proposed to construct the Northern State Parkway through their hunting grounds. A bitter dispute developed between the club's members and Moses. New York State Governor Alfred E. Smith's highly unusual and impractical solution was to create a tunnel under the parkway so that the foxes could reach the other side of the parkway. Presumably the terrified foxes, which were being chased by hounds and huntsmen, would have the common sense to use the underpass rather than chance crossing the roadway.⁷



*Meadow Brook Hunt Club at Foxhall Parker Keene's
Old Westbury Estate, Rosemary Hall, 1906*

The intense rivalry between the two hunting clubs gradually shifted to polo. Introduced into New York City in 1876 by James Gordon Bennett, it quickly became the rage among the Island's socially elite. In 1881 members of the Meadow Brook Hunt Club formally incorporated the Meadow Brook [original spelling] Polo Club. Its roster of players was a veritable who's who of the Island's social register.⁸ The club's "Big Four," Harry Payne Whitney, Devereaux Milburn, Sr., and Larry and Monty Waterbury, dominated international polo winning the Westchester Cup from Great Britain in 1909 and successfully defending it in 1911 and 1913. With the retirement of Whitney in 1914, the cup was lost and would not be regained until 1921 when Devereaux Milburn, Sr., Louis Ezekiel Stoddard, Sr., James Watson Webb, Sr., and Thomas Hitchcock, Jr. defeated the British team.⁹

The game reached its zenith in the 1920s and 1930s with polo players becoming the era's celebrities. The Meadow Brook, known as the "Heart of American Polo," with its eight fields each larger than seven football fields and its forty thousand-spectator International Field, became the site of the internationally prestigious United States Polo Open and Westchester Cup matches.¹⁰ On days that matches were held, the Island's roads were clogged with traffic as fans attempted to reach the polo fields while other fans were accommodated by special trains scheduled by the Long Island Rail Road. Indeed, polo had become so popular that when the DuPont Company was approached to sponsor a radio program to be aired at 3 o'clock

on Sundays, the company rejected the proposal stating, “Everyone is playing polo.”¹¹ World War II would take a significant toll on the popularity of polo on the Island as the country’s priorities addressed the war effort. Its diminished popularity continued after the war culminating in 1953 when the U.S. Polo Open moved from the Meadow Brook, where it had been held since 1923, to the Oak Brook Polo Club in Hinsdale, Illinois, as the hub of polo activities migrated westward.¹² A year later the Meadow Brook Polo Club’s site was sold to the federal government and became a runway for jet airplanes at Mitchel Field. The club’s activities were relocated to Jericho and in 1968 that site was sold for a housing development. No longer commanding the popularity of its heyday, the Meadow Brook Polo Club currently holds matches at Bethpage State Park and at the club’s field on Whitney Lane in Old Westbury while the Rockaway Hunting Club has shifted its emphasis to golf and tennis.



*Meadow Brook Polo Club's
International Field*

With the advent of World War I, the airplane was no longer viewed as a phenomenon; it was evolving into an important industry and Long Island was in the forefront. Estates that had been established by polo and hunting club members as well as others of the Island’s socially elite in the communities of Hempstead, Uniondale, Salisbury, and East Meadow gradually gave way to the development of the aviation industry. The large estates of William Sake Hofstra, *The Netherlands*, Sidney Dillon Ripley Sr., *The Crossways*, Elliot Roosevelt, Sr., *Half Way Nirvana*, Adolph Ladenburg, *Heathcote*, Jacques Lebaudy, *Phoenix Lodge*, and Oliver Hazard Perry Belmont, *Brookholt*, disappeared as the focus of the Plains changed.

While most people will recognize Roosevelt Field as the site of Charles Lindbergh’s 1927 transatlantic flight, few will be aware of or recognize the significance of Washington Avenue Field, Nassau Boulevard Field, Hempstead Plains Airfield, Camp Mills, Hazelhurst Field, Aviation Field #2, Curtiss Field, and Curtiss Airport in the creation and development of the aviation industry.¹³ Six years after the Wright Brothers’ 1903 flight at Kitty Hawk, Washington Avenue Field (sometimes referred to as Mineola Field) was established by the New York Aeronautic Society on land leased from the Garden City Company. Located adjacent to the present-day site of the Mineola Court House complex in Garden City, the field extended southward from Old Country Road and was bounded on the west by Garden City’s Washington Avenue.¹⁴ The very year the field was established, Glenn Curtiss would win the Scientific American Trophy and \$10,000 when he flew a fifteen-and-a-half-mile circuit over Mineola and Westbury in a historic fifty-eight-minute flight which originated and ended at Washington Avenue Field.¹⁵

The Hempstead Plains again came to the forefront of aviation history when in 1910 the First American International Aerial Tournament was held at the Belmont Park Racetrack. The week-long event attracted some forty contestants and more than seventy-five thousand spectators to watch the competitions between

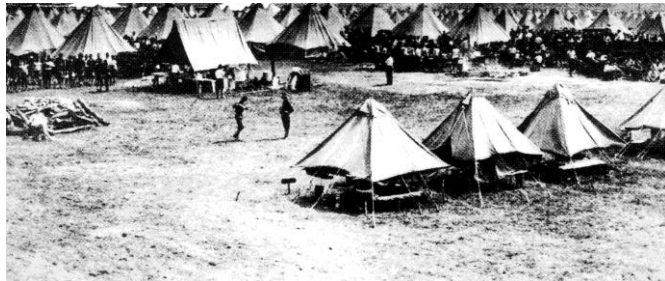
aviators from Europe and the United States. The event was somewhat marred when one of the highlights of the tournament, a race from Belmont Park Racetrack to the Statue of Liberty, a hotly contested event with national pride and international standing at stake, was won by the American entry John Moisant over the Englishman Claude Graham White in an extremely close and disputed finish.¹⁶

Garden City's Nassau Boulevard Field was established in 1910 because of the inadequacies at the Washington Avenue Field. The three hundred and fifty-acre field was located in the northwestern section of Garden City, roughly corresponding to the area between the village's present-day Nassau Boulevard and Merillon Avenue railroad stations. Much more extensive than the Washington Avenue Field, it consisted of thirty-one hangers, five grandstands, repair shops, a refreshment stand, an administrative building, and Giuseppe Bellanca's flying school. Just one year after the establishment of the field it hosted the Island's Second International Aerial Tournament. It was during this meet that Earl Lewis Ovington, the country's first airmail pilot, made the United States' first airmail delivery flying five and a half miles from the Nassau Boulevard Field to Mineola where at five hundred feet he tossed the mail pouch over the side near the Mineola post office.

The meet also saw the first demonstration of aerial reconnaissance by the military when Lieutenants Henry Harley "Hap" Arnold and Thomas DeWitt Milling successfully demonstrated how concealed enemy soldiers could be located from the air.¹⁷

By 1912 the constant complaints of excessive noise by the area's residents caused the Washington Avenue and Nassau Boulevard Fields to be relocated to the nine hundred-acre Hempstead Plains Airfield, which had been established in 1911 east of Garden City's Clinton Road. For its time, it was a truly impressive facility with thirty-five hangers, Glenn Curtiss' flying school, and four grandstands that could accommodate sixteen hundred spectators.¹⁸

Five years after the establishment of the Hempstead Plains Airfield, Camp Mills was established near the airfield as a training facility and a principal embarkation center for World War I soldiers. Named for Brigadier General Albert L. Mills, it quickly evolved from a tent encampment to an 838-building compound. Facilities sufficient to support fifty thousand troops included 9 administrative buildings,



Camp Mills

398 enlisted men's barracks, 36 officers' quarters, 108 lavatories, 105 mess halls, 69 quarantine huts, 2 delousing stations, and a 2,500-bed hospital. The site had its own water and sewer pump stations and an electrical sub-station. A Liberty Theatre, a library, and seven post exchanges were available to the troops; three stables and two haysheds were provided for the horses of the mounted troops.¹⁹ In 1918 Camp Mills was merged with the adjacent Aviation Field #2 to become Mitchel Field, a training facility for Army pilots. With the ending of hostilities, Mitchel Field became the only army post in the northeastern United States, the defense point for the metropolitan area, and a

center for aviation experimentation.²⁰ With the outbreak of World War II Mitchel Field became the headquarters of the army's First Air Force and continued its role as the primary defense for the New York metropolitan area. By 1945 the field had become the headquarters of the Air Defense Command for the entire United States.

Mitchel Field would also become a victim of the area's population density when in 1949 all tactical aircraft were moved off the Island to other air bases. It finally closed in 1961 with most of its property being conveyed to Nassau County. Mitchel Field was the last airfield used for military operations in Nassau County. Today it is the site of Hofstra University's northern campus, Nassau Veterans' Memorial Coliseum, the Long Island Children's Museum, the Nassau County Firefighters Museum, and the Cradle of Aviation Museum together with hotels, restaurants, and a host of office buildings.

Hazelhurst Field had been established in 1917 on the site of the former Hempstead Plains Airfield as a World War I army pilot training center, on property previously used by the New York National Guard. The naming of the field honored Second Lieutenant Leighton Wilson Hazelhurst, Jr., who was killed in an airplane accident on June 11, 1912, at College Park, Maryland.²¹ In 1918 Hazelhurst was renamed Roosevelt Field in honor of President Theodore Roosevelt's son Quentin, who had trained at Hazelhurst and who was killed in 1918 during aerial combat over France.²²

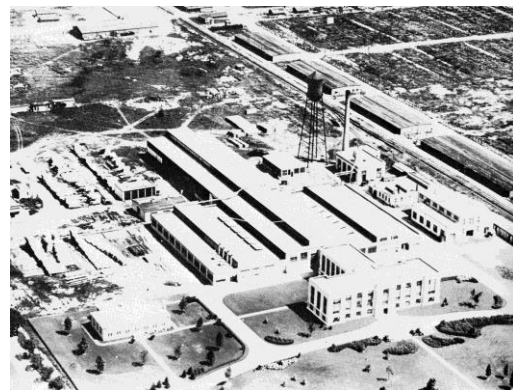
Abandoned by the military after World War I, Roosevelt Field became a civilian commercial airport. By the mid-1930s it had become the country's largest and busiest private airport. In the period between the two world wars Roosevelt Field became the center of aeronautical experimentation, daredevil air shows, and record-breaking cross-country and transatlantic flights. Its decline was precipitated by a massive increase in the area's population, its lack of proximity to Manhattan, and the development of LaGuardia Airport which began operation in 1939. The real estate development company of Webb and Knapp purchased two hundred and fifty acres of the field as well as one hundred and ten acres of the adjacent Westbury Golf Club in 1951 for the construction of Roosevelt Field Shopping Mall thus ending another chapter in aviation history on the Plains.²³

In 1920 the western half of Roosevelt Field was sold to the Curtiss Aeroplane and Motor Corporation and renamed Curtiss Field. In 1929 Curtiss Field was reincorporated into Roosevelt Field when the company built Curtiss Airport in Valley Stream. From 1930 to 1933 the Valley Stream facility was the largest commercial airport on Long Island but was forced to close in 1933 due to financial pressures caused by the Depression.²⁴

The Aviation Country Club was established on the Hempstead Plains in 1929 in what was a more unusual use of the aviation facilities as the post-Lindbergh mania for flying became a leisure activity for the Island's socially elite. Seventy-six of the club's one hundred and seventy-five members owned their own planes while most of the remaining membership were licensed pilots. The club which, sold and rented planes, had a landing field, hangar, mechanics, fuel, and a flight instructor. The four-bedroom clubhouse had an adjacent swimming pool and tennis courts. In 1948 the club, which never had an accident in its almost

twenty-year history, was sold to William Laird Levitt, Sr. and became part of Levittown.²⁵ For a while a few of the club's members entertained the idea of relocating the club to a small private airport in Commack but abandoned the idea due to lack of interest by the general membership. In 1950 the Aviation Country Club formally dissolved. The only reminder of the club's existence in the area is a street named Pilots Lane in Levittown.

Without question, the existence of the Island's approximately eighty airfields contributed to the continuing development of Long Island's aviation industry. In 1917 Glenn Curtiss built a plant in Garden City for the Curtiss Engineering Corporation. Devoted to aeronautical research and development, it was a separate company from his Curtiss Aeroplane and Motor Corporation, based in Hammondsport, New York.²⁶ The Garden City facility became a training ground for aeronautical engineers who were able to test their designs in the company's ten-foot-diameter wind-tunnel, which at the time was the largest in the country. In 1920 Curtiss decided to close his Hammondsport factory and move the headquarters of the Curtiss Aeroplane and Motor Corporation, as well as most of its airplane production, to Garden City where his company manufactured three-quarters of the nation's planes.²⁷ In 1929 the Curtiss Aeroplane and Motor Corporation merged with Wright Aeronautical Corporation to form the Curtiss-Wright Corporation. Two years later the firm relocated its manufacturing facilities to Buffalo, New York.



Curtiss Garden City factory, aerial view

Beginning with the Curtiss Engineering Corporation, the Island's aviation industry mushroomed into such industry leaders as Grumann (Bethpage and Calverton), Republic (Bethpage), Sperry Gyroscope (Garden City, Lake Success, and Bethpage), and Fairchild Camera and Instrument (Farmingdale), which, in turn, gave impetus to the Island's numerous aviation sub-contractors.

With the end of the Cold War and the resulting reduction in the military complex, aviation companies gradually began to merge and relocate off the Island. Today the industry, which employed about five thousand workers by the end of the 1930s and which had reached its peak of some ninety to one hundred thousand employees during World War II, accounts for only about twenty-five to thirty thousand of the Island's jobs.

In an odd twist of fate, the military bases and the aeronautical industry they spawned on the Hempstead Plains, once the powerhouse of the Island's economy, became victims of the post-war boom in residential and industrial development which they were instrumental in creating. The original flora of the Plains has been diminished as well by suburbanization to a fraction of its original sixty thousand acres. Seventy-nine acres, the Hempstead Plain Preserve just south of Charles Lindbergh Boulevard and nineteen additional acres located on the campus of Nassau Community College, are all that remain.²⁸ The estate homes in the Five Towns area, that have survived, have, in many instances, had their architectural integrity compromised by subsequent owners. What remains virtually untouched is what Garden City residents refer to as the original

estate area located in the central section of their village. The estate areas in the villages of Hempstead, East Meadow, Uniondale, and Salisbury are, however, forever gone.

Endnotes

1. The area south of Sunrise Highway for the most part was a swampy area into which the streams from the Plains to its north drained. Henry Hicks, with foreword by Judith A. Spinzia and afterwards by Natalie A. Naylor, "The Hempstead Plains and It's Flora, 1871," *Nassau County Historical Society Journal* 58 (2003), pp. 30-40.

2. The population of the Village of Hempstead has risen from 2,316 in 1870 to an estimated 53,896 in 2008 while that of Nassau County has increased from 31,134 to an estimated 1,351,625 during the same period.

3. Historians generally agree that the New Market Race Track was located in the northwestern section of the Town of Hempstead but there is a lack of consensus as to its exact location. They have placed the site of the tract in the present day villages of New Hyde Park, Garden City, and Garden City Park prior to its relocation in the early 1800s to a site three miles west of Jamaica in Queens County when it became the Union Race Track.



Vanderbilt Cup Race

The Belmont Park Racetrack is situated on the grounds of de Forest Manice's estate *Oatlands*. The track's original Turf and Field Clubhouse was the estate's main residence. See Manice entry in this volume.

Roosevelt Raceway was the site of an ill-fated automobile racetrack created to host the dormant Vanderbilt Cup races, a project that was abandoned after only two races. It became the site of Roosevelt Raceway in 1940. Harness racing ceased at Roosevelt Raceway in 1988.

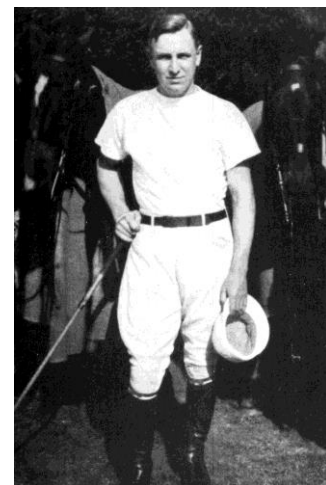
4. Charles S. Pelham-Clinton, "Fox Hunting Near the Metropolis" *The Cosmopolitan* 7 (May 1889), pp. 82-83, 87, and "Country Clubs and Hunt Clubs" *Scribners Magazine* July - Dec. 1895, p. 308.

5. Mrs. John King Van Rensselaer and Frederic Van De Water, *The Social Ladder* (New York: Henry Holt & Company, 1924), p. 288.

6. George de Forest Lord, *Now or Then* (Bloomington, IN: AuthorHouse, 2007), p. 13.

7. Cleveland Amory, *Who Killed Society?* (New York: Harper & Brothers, Publishers, 1960), p. 87.

8. For prominent Long Island polo players George Herbert Bostwick, Sr., Winston Frederick Churchill Guest, William Averell Harriman, Thomas Hitchcock, Jr. and Sr., David Stewart Iglehart, Foxhall Parker Keene, and Devereaux Milburn, Sr. see entries in Spinzia, *Long Island's Prominent North Shore Families: Their Estates and Their Country Homes, vol. I* (College Station, TX: VirtualBookworm, 2006); Charles Cary Rumsey, Sr., James Watson Webb, Sr., and Harry Payne Whitney in Spinzia, *Long Island's Prominent North Shore Families: Their Estates and Their Country Homes, vol. II* (College Station, TX: VirtualBookworm, 2006); August Belmont II, Oliver William Bird, Jr., and Elliot Roosevelt, Sr. in this volume.



Thomas Hitchcock, Jr.

9. Thomas Hitchcock, Jr. was awarded a ten-goal rating (the highest) in eighteen of nineteen seasons from 1922 through 1940 and is considered by many to be the greatest player in the history of polo. He was a member of the United States Polo Open teams in 1923, 1927, 1935, and 1936; a member of the Westchester Cup teams of 1921, 1924, 1927, 1930, and 1939; and captain of the United States Olympic Polo team of 1924.

10. Edward J. Smits, *Nassau Suburbia, USA: The First Seventy-five Years of Nassau County, New York 1899-1974* (Garden City: Doubleday & Company, Inc., 1974), p. 127.

11. Amory, *Who Killed Society?* p. 87

Polo made several contributions to the fashion world by introducing the camel hair polo coat, the polo shirt, and the button-down collar dress shirt, which was developed by Brooks Brothers in 1913.

12. The U.S. Polo Open ended a forty-one-year hiatus when in 1994 it returned to the Meadow Brook for two consecutive years.

13. The Hempstead Plains Airfield, Camp Mills, Hazelhurst Field, Aviation Field #2, and Curtiss Field were located slightly to the east of Garden City's Clinton Road; Curtiss Airport was in Valley Stream; and the Washington Avenue and Nassau Boulevard Fields were in Garden City.

14. Mildred Smith, *History of Garden City* (Garden City: Garden City Historical Society, 1980), p. 85.

15. See Curtiss entry in this volume for Glenn Curtiss' Garden City residence.

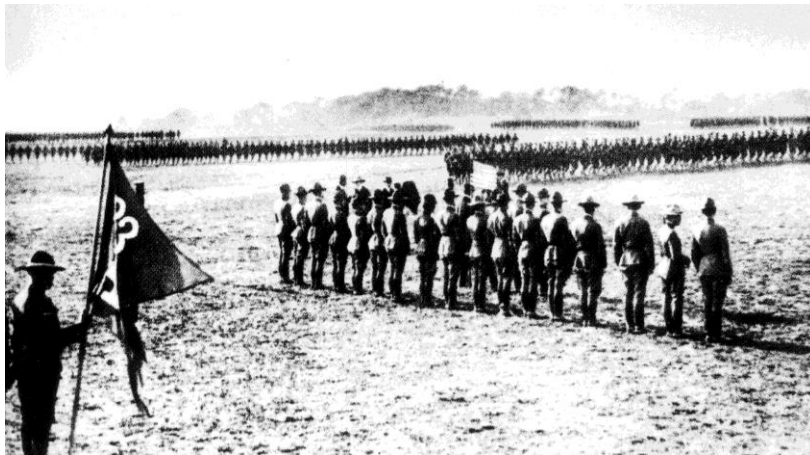
16. Bernie Bookbinder, *Long Island: People and Places Past and Present* (New York: Harry N. Abrams, Inc., 1983), p. 165.

17. Henry Harley "Hap" Arnold would become a five-star general in the Army and, later, in the Air Force. He is the only officer to hold a five-star grade in two different branches of the military. Thomas DeWitt Milling would end his military career as a brigadier general.

18. Smith, *History of Garden City*, pp. 70 and 86.

19. Smith, *History of Garden City*, p. 100.

Douglas MacArthur trained the Rainbow Division at Camp Mills prior to its embarkation for France during World War I.



Rainbow Division on parade at Camp Mills, 1917

20. James Harold "Jimmy" Doolittle, who during World War II was awarded the Medal of Honor for planning and leading the 1942 B-25 bomber raid on Japan from the aircraft carrier USS *Hornet*, was a member of Mitchel Field's Naval Testing Board, a high-speed airplane racer, a test pilot, and an aeronautical engineer, who took an active role in the development of instrument flying. In 1929, while stationed at Mitchel Field, he successfully tested Sperry's horizon and directional gyroscopes to take off, fly, and land a plane solely by the use of instruments thereby becoming the first pilot to ever "fly blind."

21. Also known as Aviation Field #2, Hazelhurst was later incorporated into Mitchel Field.

22. By 1918 Hazelhurst and Mitchel Field had become the two largest airfields in the United States.

23. Smits, *Nassau Suburbia, USA*, p. 108.

24. In 1956 the northern portion of Curtiss Airport would become Valley Stream's Green Acres Mall.
A plaque, originally installed at the Green Acres Mall but now on display at the American Airpower Museum in East Farmingdale, honors the Ninety-Nines, an international organization of licensed women fliers, organized in 1929 at Curtiss Airport. In 1931 the ninety-nine charter members elected Amelia Earhart the organization's first president.
25. For a description of William Laird Levitt, Sr.'s Mill Neck estate *La Colline*, see Spinzia, *Long Island's Prominent North Shore Families*, vol. I.
26. The Curtiss Aeroplane and Motor Corporation owned fifty-one percent of the Garden City-based Curtiss Engineering Corporation.
27. C. R. Roseberry, *Glenn Curtiss: Pioneer of Flight* (Syracuse, NY: Syracuse University Press, 1991), p. 429.
28. The nineteen-acre preserve at Nassau Community College is managed by The Nature Conservancy. The Hempstead Plains Preserve is supervised by Nassau County Department of Parks, Recreation, and Museums.



*Harold Jacobi, Sr. residence,
bedroom*

Atwater, Amariah George Cox, Sr. (1910-1997)

Occupation(s): industrialist - vice president for sales, William Wrigley, Jr., Co.,
Chicago, IL (chewing gum manufacturer);
director, William Wrigley, Jr., Co., Ltd., Canada
intelligence agent - head of the Office of Strategic Services for Middle
Eastern Theater during World War II

Civic Activism: president, Tavern Club, Arlington Racetrack;
president, Post and Paddock Club, Arlington Racetrack

Marriage(s): M/1 – 1932-div. 1936 – Betty Ann Bergmann (1913-1998)
M/2 – 1936-div. 1939 – Marjorie Elizabeth Millsap (1911-1999)
(aka Dorothy Lee)
- entertainers and associated professions - motion picture comedian
M/3 – 1941-div. 1949 – Angelita Kay Harmes (1915-2004)
- model
entertainers and associated professions - radio singer
M/4 – Nancy Fuller (1925-1975)

Address: 174 Roxbury Road, Garden City

Name of estate:
Year of construction: 1929
Style of architecture: Colonial Revival
Architect(s):
Landscape architect(s):
House extant: yes
Historical notes:

Amariah George Cox Atwater, Sr. was the son of Albert Leonard and Blanche Cox Atwater of Garden City.

In 1932 Amariah George Cox and Betty Ann Bergmann Atwater, Sr. were residing at the Roxbury Road address. [*The Brooklyn Daily Eagle* March 16, 1932, p. 21.]

Their daughter Claire married David Daniel Stuart.

Marjorie Elizabeth Millsap Atwater was the daughter of Homer and Bess Millsap. Marjorie had been previously married to Robert Booth, Jimmy Fidler, and Marshall Duffield. After her divorce from Atwater, she married Frank John Bersbach, Jr. and, subsequently, Charles Calderni.

Angelita Kay Harmes Atwater was the daughter of John Albert Ray and Leonora Angeline Conant Harmes. Angelita had previously been married to Seymour Laney.

Amariah George Cox and Angelita Kay Harmes Atwater, Sr.'s son Amariah George Cox Atwater, Jr. married Donna Johnson, the daughter of Donn E. and Beverly Jean Streedain Johnson. After Angelita's divorce from Amariah, she married William Rasmussen.

Nancy Fuller Atwater was murdered by her husband's forty-year-old male nurse Daniel Bedelian. Bedelian stabbed and bludgeoned Mrs. Atwater in her California home and stuffed her body into a fifty-five-gallon steel barrel which he then filled with concrete and dumped in a Pacoima, CA, junkyard. [*The New York Times* February 7, 1975, p. 11; *The Los Angeles Times* March 8, 1975, p. C9, April 18, 1975, p. D8, July 3, 1975, p. OCA2, and December 12, 1975, p. E1.]

[See preceding entry for additional family information.]

In 2005 the 2,588-square-foot house sold for \$1, 385,800.



front facade

Belmont, Oliver Hazard Perry (1858-1908)

Occupation(s): financier - partner, August Belmont & Co. (investment banking firm)
publisher - *The Verdict*
politician - member, United States Congress, 13th district, 1901-1903

Marriage(s): M/1 – 1882-div. 1885 – Sarah Swan Whiting (1861-1924)
M/2 - 1896-1908 – Alva Erskine Smith (1853-1933)
- writer - *Melinda and Her Sisters* (suffragist opera/with Elsa Maxwell); *One Month's Log of the Seminole*, 1916;
two unpublished autobiographies, 1917, 1933
journalist - numerous newspaper and magazine articles

Civic Activism:
woman's suffrage* - founder and president, Political Equality Association, NYC;
first president, National Woman's Party;
purchased building in Washington, DC, for National Woman's Party [now, known as the Sewall–Belmont House];
primary benefactor and president of board, Hempstead Hospital, Hempstead [not the present-day hospital also named Hempstead Hospital];
established, Brookholt School of Agriculture for Women at East Meadow estate;
built and supported, Sea Side Hospital for Sick Children, Great River;
built mission church for Our Lady of Loretto Roman Catholic Church, 1904, Hempstead;
paid for rectory furnishing for St Mark's Episcopal Church, Islip (the church was financed by her first husband, William Kissam Vanderbilt, Sr.)

Address: Front Street, East Meadow
Name of estate: *Brookholt*
Year of construction: c. 1897
Style of architecture: Colonial Revival
Architect(s): Richard Howland Hunt designed the 1897 house (for O. H. P. Belmont)
John Russell Pope designed a Georgian-style farmhouse, 1906 (for O. H. P. Belmont)*
Landscape architect(s): Hicks Nursery supplied plantings (for O. H. P. Belmont)

House extant: no; destroyed by fire, 1934

Nassau County Museum Collection has photographs of the estate.

Historical notes:

The house, originally named *Brookholt*, was built by Oliver Hazard Perry Belmont. It contained nine master bedrooms, nine bathrooms, and thirteen bedrooms for servants.

He was the son of August and Caroline Slidell Perry Belmont, Sr. of *Nursery Stud Farm* in North Babylon.

Sarah Swan Whiting Belmont was the daughter of Augustus and Sarah Swan Whiting, Sr. of Newport, RI. She separated from Oliver during their Paris honeymoon because of his excessive drinking and his affair with a French dancer. Oliver refused to recognize their daughter Natica as his child and disinherited her. In 1907, Natica married William Proudfit Burden. She died of asphyxiation in 1908 due to a faulty gas line to a lamp. Natica had been adopted by Sarah's second husband George Lockhart Rives. Sarah and George's son Francis married Helen Leigh Hunt, the daughter of Leigh Smith James and Jessie Nobel Hunt, and resided at *Mapleglades* in Hewlett Bay Park.

[See previous entry for information on the Belmont family.]

The estate was subsequently owned by Alexander Smith Cochran, who sold it in 1923 to the Cold Stream Golf Club.

[*The New York Times* November 18, 1923, p. XII.]

[For information about Alva Erskine Smith (Vanderbilt) Belmont's North and South Shore estates, see Spinzia, *Long Island's Prominent North Shore Families*, vol. 1 – Belmont entry – and *Long Island's Prominent South Shore Families* – Vanderbilt entry.]

The 1906 Georgian-style farmhouse on the estate property was demolished.

*For other Long Islanders involved in the suffrage movement see Raymond E. Spinzia, "Winning the Franchise: Long Island Activists in the Fight for Woman's Suffrage and Their Opponents, Long Island's Anti-Suffragists." www.spinzialongislandestates.com.

[For information about Alva Erskine Smith (Vanderbilt) Belmont, see Raymond E. Spinzia, "In Her Wake: The Story of Alva Smith Vanderbilt." *The Long Island Historical Journal* 6 (Fall 1993):96-105 and www.spinzialongislandestates.com.]

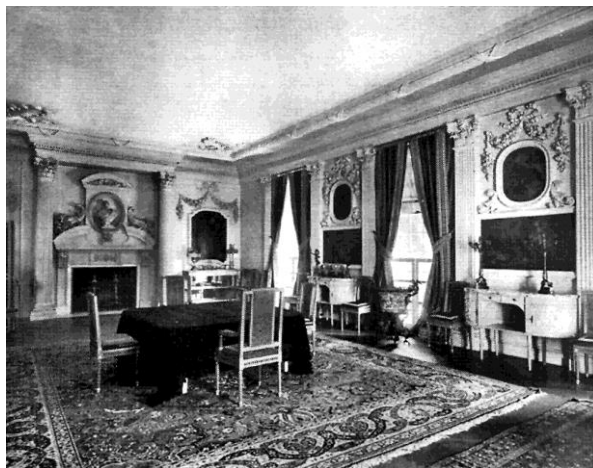
Oliver Hazard Perry Belmont residence, *Brookholt*



rear facade, 1902



side/front facade



dining room



side / front facade, 1902



stables

Chambers, Jay (1877-1922)
aka James A. Chambers

Occupation(s): artist - bookplate illustrator;
graphic artist, *New York World*

Civic Activism: directed and designed sets for numerous local and Brooklyn
theatrical productions;
designed sets for General Organization of South Side High
School, 1915;
donated 800 modern American and foreign bookplates to the
Flatbush Branch of the New York Public Library

Marriage(s): 1900-1922 – Laha Whittaker (1872-1958)
- Civic Activism: involved in numerous local school and
community theatrical productions;
president, Mothers Club of Lynbrook;
a founder, Lynbrook Public Library

Address: 228 Earle Avenue, Lynbrook

Name of estate:

Year of construction: 1915

Style of architecture: Long Island Farmhouse

Architect(s):

Landscape architect(s):

House extant: yes

Historical notes:

James A. Chambers was the son of James Slater and Elizabeth Mendora Chambers.

Laha Whittaker Chambers was the daughter of Charles and Mary Blanchard Chambers. Her name was Malaysian for princess.

James A. and Laha Whittaker Chambers' family was totally dysfunctional. James did not want or like children and seldom spoke to his sons. In spite of the fact that he made a good salary as an artist, he refused to repair the house or purchase adequate furniture. The kitchen was created by moving a service building against the house. The juncture of the two buildings leaked for ten or twelve years until his son Richard was old enough to climb onto the roof and repair it. The wallpaper in the house was old, faded and peeling. The ceiling in the living room/dining room collapsed revealing the laths. The yellow paint on the exterior of the house was faded and peeling.

In 1926, their twenty-three-year-old son Richard, who had taken to drink, committed suicide in the kitchen by turning on the stove's gas jets.

Their son Jay Vivian Chambers (aka Whittaker Chambers and David Whittaker Chambers), who was bi-sexual, married Esther Shemitz. He became a Soviet spy and testified before the House UnAmerican Activities Committee of Congress that Alger Hiss, who would later reside in East Hampton, was a member of the Communist Party. [See Spinzia, *Long Island's Prominent Families in the Town of East Hampton* – Hiss entry – and Whittaker Chambers, *Witness: Whittaker Chambers*. (New York: Random House, 1952).]



front facade, 2000

Lebaudy, Jacques (1868-1919)

Occupation(s): capitalist - owner, Huanchaca Silver Mine, Chile

Marriage(s): 1896-1919 – Augustine Delliere (1873-1950)
- entertainers and associated professions - French actress

Address: Valentine’s Road, Salisbury
Name of estate: *Phoenix Lodge*
Year of construction:
Style of architecture: Modified Colonial Revival
Architect(s):
Landscape architect(s):
House extant: no*
Historical notes:



front facade, c. 1919

The house was previously owned by William Morrow Knox Olcott, who called it *Phoenix Lodge*. In 1913, Olcott sold the house to Lebaudy, who continued to call it *Phoenix Lodge*.

He was the son of French sugar refining magnet Jules Lebaudy and Amicie Piou Lebaudy. Jacques’ sister was Countess Marie Teresa Jeanne Lebaudy de Fels.

In 1903, after inheriting \$8 million from his parents, Jacques converted his yacht *Frasquita* into a battleship and sailed to North Africa where he proclaimed himself Jacques I Emperor of the Sahara. After being rebuffed by the French and Spanish governments, both of which laid claims to portions of North Africa, Lebaudy came to Long Island. Becoming increasingly unstable, he was confined to the state hospital in Amityville. He was released by a court order from the Amityville facility but was again institutionalized after assaulting his wife, but, then, again released. While his wife and eighteen-year-old daughter were on the second floor of their Long Island mansion, Lebaudy attempted to burn down the house. Hearing the noise, Mrs. Lebaudy came down the stairs and shot him five times, killing him instantly.

In 1922, Augustine Delliere Lebaudy married her bodyguard Henri Sudreau and took up residence in France.

The Lebaudys’ daughter Marguerite married Henri Sudreau’s son Roger and also resided in France.

*In 1926, the estate was purchased by Lannin Realty Company. In 1935, several of the estate’s service buildings were destroyed by fire.

Robinson, Charles M. (b. 1856)

- Occupation(s): business manager, Barnum and Baily Circuses
politician - member, Ohio State Assembly
- Marriage(s): 1891-div. 1912 - Josephine DeMott (1865-1948)
- entertainer and associate professions –
circus bareback horse performer, Robinson Circus and Barnum and Baily Circus;
uncredited stunt circus performer for May Marsh in the motion picture “Polly of the Circus,” 1932;
performed shoulder stands on a moving horse in Billy Rose’s “Jumbo,” Hippodrome, NY, 1936
capitalist - trained horses to perform in the circus;
owner, horse riding school for girls, Garden City;
owner, dance studio, Fulton and Franklin Streets, Hempstead
educator - director of fashion and posture, Traphagen School of Fashion, NYC, 1934-1944
writer - *A Women’s Story of the Gold Rush*, 1921 (autobiography published in McCall’s magazine);
The Circus Lady, 1926 (autobiography);
co-author, *Five Girls Who Dared*, 1930;
Civic Activism: suffragist* - founder, Women of Barnum and Bailey Equal Rights Society, 1912;
president, local suffragist club;
participated in Mineola to Hempstead Suffrage Parade, 1913;
participated in Suffrage Aviation Parade, Hempstead Field, 1913

- Address: between Nassau and Hempstead Avenues, West Hempstead
Name of estate:
Year of construction: c. 1855
Style of architecture:
Architect(s):
Landscape architect(s):
House extant: no
Historical notes:

The house was built by Samuel E. Johnson. He served as a Kings County judge, Brooklyn school superintendent, and New York State Assemblyman. The fourteen-acre farm was later purchased by the Robinsons.

Charles M. Robinson was the son of the Robinson Circus owner John Robinson.

Josephine DeMott Robinson, who was a third-generation circus performer, was the daughter of James and Josephine Tourmiaire DeMott.

The Robinsons did not have children. Josephine would later adopt Verona Ruth Oakley, who married Harold Francis Merritt, Sr. and resided in Garden City. [See Merritt entry.]

In 1917, Josephine sold the house and property to William Collins, who, in 1940, sold it to a developer who drained the farm’s pond and built the Hempstead Manor housing development. A portion of the property became the site of the Hebrew Academy of Nassau County.

*For other Long Islanders involved in the suffrage movement see Raymond E. Spinzia, “Winning the Franchise: Long Island Activists in the Fight for Woman’s Suffrage and Their Opponents, Long Island’s Anti-Suffragists.” www.spinzialongislandstates.com



Tjaden, Olive Frances (1904-1997)

Occupation(s): architect - [See Architects appendix for selected list of commissions in the Town of Hempstead.]*

Civic Activism: director, Museum of Fine Arts, Fort Lauderdale, FL;
inspector, Federal Housing Administration;
vice-president, Alumnae Association of College of Architecture, Art, and Planning, Cornell University, Ithaca, NY;
member, business ethics committee, Town of Hempstead Zonta Club;
recording secretary, American Association of University Women, 1972;
publicity chair, Cornell Women's Club of Long Island;
bequeathed the major portion of her \$12 million estate to Cornell University

Marriage(s): M/1 – 1945-div.1969 – Carl Johnson
- architect
capitalist - real estate developer
M/2 – Roswell Charles Van Sickle (d. 1995)
- electrical engineer; worked on the Manhattan project that developed the atomic bomb
inventor - hydraulically operated circuit breaker with tandem piston construction

Address: 104 Eleventh Street, Garden City

Name of estate:

Year of construction:

Style of architecture: Norman Revival

Architect(s): Olive Frances Tjaden designed her own residence

Landscape architect(s): Olive Frances Tjaden designed her own landscaping

House extant: yes

Historical notes:

The house was built by Olive Frances Tjaden Johnson. She designed over two thousand buildings, four hundred of which were on Long Island. In addition, she planned the house for the 1939 World's Fair, Inwood Country Club in Atlantic Beach, apartment buildings in Lawrence, and the remodeling of the Congregational Church in Garden City.

Olive Tjaden entered Cornell University at the age of fifteen and completed the university's five-year architectural degree in four years. She was the only woman in her class of 1928 to graduate with an architectural degree and was the youngest registered architect in New York State. The university's Tjaden Hall and Van Sickle Art Gallery are named in her honor. In 1938, Olive was the first woman to be inducted into the American Institute of Architects and, for over two decades, was considered to be the most prominent woman architect in the Northeast. [Sarah Allaback, *The First American Women Architects* (Urbana, IL: University of Illinois Press, 2008), p. 40.]

She was the daughter of John and Hilda Francke Tjaden of Queens Village, NY.

*Although married twice, Tjaden used her maiden name professionally.

Her Garden City office was located at 109 Seventh Street.

She relocated to Florida in 1945.

Carl Johnson was the son of Alfred Johnson.



front facade, 2009

Olive Frances Tjaden residence



main floor peacock stained-glass door



*Hilda Francke Tjaden
(Mrs. John Tjaden)*



patio, outside peacock stained-glass door

Olive Frances Tjaden residence



rear garden



rear garden



sun room

Anti – Suffragists:

Backus, Harriet Ivins Davis
(Mrs. Henry Clinton Backus)
111 Seventh Street, Garden City

Gross, Andre Eugene
122 Salisbury Avenue, Garden City

Gross, Elinor Whitney Kendell
(Mrs. Andre Eugene Gross)
122 Salisbury Avenue, Garden City

Wickersham, Mildred Wendell
(Mrs. George Woodward Wickersham)
Marchfield, Hollywood Crossing, Lawrence

Wickersham, George Woodward
Marshfield, Hollywood Crossing, Lawrence

Wickersham, Miss Constance
[See G. W. Wickersham entry.]
Marshfield, Hollywood Crossing, Lawrence

Suffragists:

Anderton, Elizabeth Story Palmer
(Mrs. William Bancroft Anderton)
Ye Corners, Ocean Avenue, Lawrence

(Mrs. Lewis Livingston Delafield, Jr.)
**Norton Perkins Cottage, Ocean Avenue,
Lawrence**

Belmont, Alva Erskine Smith
(Mrs. William Kissam Vanderbilt, Sr.;
Mrs. Oliver Perry Belmont)
**Idlehour [I], Idle Hour Boulevard, Oakdale;
Brookholt, Front Street, East Meadow;
Beacon Towers, Sands Light Road, Sands Point**

Eldridge, Elizabeth Moore Huyck
(Mrs. Lewis Angevine Eldridge)
115 Greenwich Street, Hempstead

Francke, Marian Doane Rand
(Mrs. Albert Francke, Sr.)
Meadow Lane, Lawrence

Brisbane, Arthur
**Newbridge Road and Hempstead Turnpike,
East Meadow**

Glover, Anna Elizabeth
(Mrs. Nathaniel Matson)
[See Glover entry.]
**Foxhurst and Merrick Roads, Baldwin;
1249 Pacific Street, Brooklyn**

Brisbane, Phoebe Cary
(Mrs. Arthur Brisbane)
**Newbridge Road and Hempstead Turnpike,
East Meadow**

Glover, Rhoda Ann Hallock
(Mrs. John Irvin Glover)
Foxhurst and Merrick Roads, Baldwin

Burr, Frances Page
(Mrs. Winthrop Burr, Sr.)
Orchard Hall, Causeway, Lawrence

Haughey, Irene Test
(Mrs. William Wallace Haughey)
Garden City

Childs, Caroline Goldsmith
(Mrs. John Lewis Childs)
91 Tulip Avenue, Floral Park

DeLafield, Charlotte Hoffman Wyeth

Hubbell, Elza Strong Platt
(Mrs. George Loring Hubbell, Sr.)
**Lonsomehurst, 6 Cathedral Avenue,
Garden City**

Macy, Edith Wiesman Carpenter
(Mrs. Valentine Everit Macy, Sr.)
Hewlett

Macy, Valentine Everit, Sr.
Hewlett

Philips, Jessie Matheson Taylor
(Mrs. Frederic Dimon Philips)
Greyhouse, 365 Ocean Avenue, Lawrence

Robinson, Josephine DeMott
(Mrs. Charles M. Robinson)
**between Nassau and Hempstead Avenues,
West Hempstead**

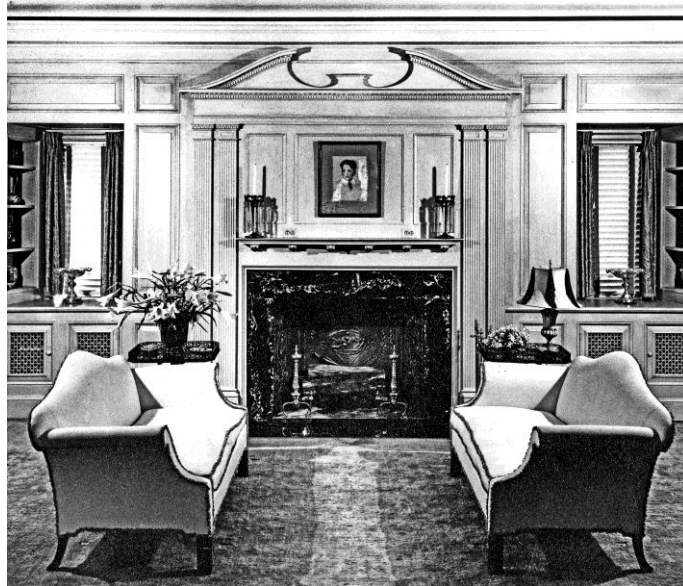
Sage, Margaret Olivia Slocum
(Mrs. Russell Sage)
**Cedarcroft / Cedar Croft, 105 Ocean Avenue
and Mallow Way, Lawrence**

Wright, Margery Rich White
(Mrs. Wilfred La Salles Wright)
Hempstead Avenue, Hempstead



Suffragist parade, New York, City, 1916

Harold Jacobi, Sr. residence



Villages

The village references used in this compilation are the current (2022) village or hamlet boundaries and should not be confused with zip code designations. When the owner who contracted for the original construction of the house is known, it is indicated by an asterisk.

BALDWIN

- * Baldwin, Francis
[See *Loft* entry.]
- * Glover, John Irwin
Loft, George William, *Lakeview*

BELLMORE

Casey, William Joseph, Jr.

CEDARHURST

- Brown, Frederick Rhineland
- Browne, Curtis Northrop
- Clafin, Avery
- d'Utassy, George
(aka George von d'Utassy)
- Edsell, Levi Perin
- Edsell, Ralph James, Sr.
- Elliman, Lawrence Bogert, Sr., *Cluny Lodge*
- La Montagne, Montaigu
- * Levy, Isaac D., *Roselle Manor*
- Orvis, Schuyler Adams, Sr.
- Pardee, Dr. Harold Ensign Bennett,
The Wild Oat
- Post, Stephen Rushmore
- Rasmus, Carl Gerhard
- Rawlins, Herbert Noel, Jr.
- Rawlins, Herbert Noel, Sr.
- Schley, Buchanan, Jr.
- Shaw, Munson Gallaudet, Sr.
- Slade, Prescott
- Slocum, Henry Warner, Jr.
- * Tilford, Frank
- Vandewater, Benjamin Cornelius
- Vandewater, James Horatio Poole
- Vandewater, Neil Horatio

EAST MEADOW

- Barnum, Joshua Willets, *Meadow Brook Farm*
- Barnum, Peter Crosby, *Meadow Brook Farm*
- * Belmont, Oliver Hazard Perry, *Brookholt*
- Brisbane, Arthur
- Cochran, Alexander Smith
- Jordan, Edward Bailey, Jr.
- Konta, Geoffrey, *East Meadows*
- Lowden, Richard, *Carman-Lowden Homestead*
- * Smith, James Clinch
- Terry, Thomas Henry, *Hempstead Farm*
- * Turnstall, Harry Alphonse
[Turnstall owned two houses in *East Meadow*.]
- * Vogel, Henry John

ELMONT

- * Manice, de Forest, *Oatlands*

FLORAL PARK

- * Childs, John Lewis
- Schwieters, John Francis

FRANKLIN SQUARE

Albert, Judith Forence Carman
Massimino, Michael James

FREEPORT

Levy, George Morton, Sr.

GARDEN CITY

- Ackerman, Raymond Pryor, Sr.
- Adams, John Trevor, Sr.
- * Addison, James, Jr.
- Anderson, Roy Bennett, Sr.
- Aten, Courtenay Nixon, Sr.
- Atwater, A. G. Cox, Sr.
- Atwater, Bert L.
- Backus, Henry Clinton
- Baker, Elwood Wilson
- Baldwin, William Mood, *Seven Acres*
- Barbatusly, Mark
[See *Ebinger* entry.]
- Becker, Claude M.
- Beebe, Henry Ward
- Beebe, John Eldridge, Sr.
- Belcher, Edwin Willoughby, Jr.
- * Bené, John Raymond
- Benkard, Henry Horton
- Berdell, Theodore Van Duzer
- Bishop, Clifford Monroe
- Black, Archibald
- Blanchard, George Holmes
- Bloomer, James Ralph
- Boardman, Andrew H.
- Bodine, William Henry Johnson, Jr.
- Bond, Walter Huntington
- Bossert, John
- Bowman, Archibald
- Breck, Duer du Pont
- Briggs, Albert Martin
- Brown, Arthur Alvin, Sr.
- Brown, Lewis Dean
- * Brown Lewis Philip
- Brush, Gilbert Palmer
- Burtis, Divine Franklin, III

Villages

GARDEN CITY (cont'd)

- * Carl, James Harvey, Jr.
Carlin, George Andrew
Cerriut, Jurge
[See H. E. Hoffman entry.]
Chalfant, Edward Newton
- * Chu, Ju Chin
Chu, Steven
Clute, Frank M.
Coffin, William Haskell, Sr.
(aka Haskell Coffin)
Combs, Clinton deRaimes, Sr.
Corroon, George Aloysius, Sr.
- * Cottone, Anthony
- * Coupe, Frank J.
Covert, Charles Edward
Coward, Loren Montague
Cruikshank, William Morris, Sr.
Curtiss, Glenn Hammond, Sr.
Daingerfield, Algernon Gray
Davidson, Thomas Charles, Sr.
Davies, Edward Livingston
de Aguilar, Francis Paul
Dean, Howard Brush, Sr.
De Mercado, Frank Eliot
- * DeMille, Nelson Richard
- * De Mott, Harry Mead
Denny, Archibald Marshall, Sr.
de Saulles, Charles Augustus Heckscher, Sr.
De Tienne, Dr. John Antoine
Doolittle, Frederick William, Jr.
- * Dooman, Dr. David Stoddard
Dow, Harold Gilman, Sr.
Downer, Jesse Halsey, Sr.
Downey, E. Kelly
Driggs, Edmund Hope, Jr.
Dunnell, Frank Lyman, Sr.
Dunning, Clarence Seymour, Sr.
Durand, Celestin Aloysious, Jr.
- * Durand, Celestin Aloysious, Sr.
Durand, Celestin Aloysious, III
Durand, James Francis, Sr.
- * Duryea, William H.
Duval, William Hamlyn, III
Earnshaw, Geoffrey S.
- * Ebinger, Walter Dohrmann
Egginton, Hersey
Egly, Henry Harris
Einhaus, Harry Madison
Emmons, Walter Reed, Sr.
Enequist, John Theodore, Jr.
- * Enequist, William Lars
Englis, William Franklin, Sr.
English, William K.
Engs, Russell Larned, Sr.
Fairchild, Willard, Sr.
(aka Charles Willard Fairchild)
Fanning, Edward Jerome
Farquhar, William Joslyn, Sr.
Fearey, Morton Lazell
- * Fensterer, Dr. Gustave Adolf, Sr.
Ferguson, David, Sr.
Ferris, Dr. Henry Clay, Sr.
Ferris, Morris Patterson
Fletcher, Thomas Clement
Floyd, Nicoll, Jr.
- * Floyd, Nicoll, III
Forgarty, James Francis, Sr.
- * Forman, Harold Baldwin
Fowler, Rosemary O'Connor
Fraser, Dougall Charles, Sr.
Fraser, John W.
Frew, Walter Edwin
- * Fulton, Ralph Whittier
Gardner, Bertram
Gaston, George Albert
- * Geer, Enos Throop, Sr.
- * Geoghegan, Joseph Gregory
Gerard, Ernest Dudley
Gerard, George Henry
Gerard, Henry Dudley
(aka Dudley Gerard)
Gesell, Dr. Herbert Ross, Sr.
Gleason, Marshall Wilfred
Gormley, John Vincent
- * Gray, James McIlvaine
- * Greason, Samuel, Jr.
Griffin, Dominic Bodkin, Sr.
- * Gross, Andre Eugene
- * Gulick, Ernestus Schenck
- * Gurney, Thomas Nichols
Halsted, Gilbert Coutant, Jr.
- * Halsted, Harold Camerden
Hamilton, Campbell Thorpe
Hamlin, Francis Bacon, Sr.
Hammond, Harry Stevens, Sr.
Hammond, John Stevens, Sr.
Hanemann, Edward Lewis
Harryman, Mildred C.
[See A. W. B. Wood entry.]
Hart, Alexander Richmond
Hart, Augustin Snow, Sr.
Hastings, The Reverend A. Abbott
Haughey, William Wallace
Heath, Cuyler
- * Hendrickson, Charles Le Roy
- * Hewitt, Thomas M.
- * Hewitt, William Wilson, Sr.
- * Hoag, Charles H.
- * Hodgson, Robert John, Jr.
- * Hoffman, Horace E.
Hollis, W. C.
[See Fogarty entry.]
Horton, Chauncey Todd, Sr.
Houghton, Owen Edward, Jr.
Howe, Wallis Eastburn, Jr.
Hubbell, George Loring, Jr.
- * Hubbell, George Loring, Sr., *Lonesomehurst*
Hubbell, John Platt, Sr.
- * Hubbell, Ralph Peters, Sr.
- * Hubbell, Sherwood

Villages

GARDEN CITY (cont'd)

- Hunter, Fenley
(aka Richard Fenley Hunter)
- * Huntington, Ellery Channing, Jr.
- Hussey, Robert F.
[See W. H. Duryea entry.]
- Hussey, Thomas Jefferson
- Hutchinson, William Furman
- * Irwin, Louis Henry
- * Irwin, Marion Griffin
- Ivison, Sterling Hollingshead, Sr.
- Jackson, Rickard Gilbert
- Jewell, John Voohees, Jr.
- Jewell, John Voorhees, Sr.
- Johnson, Lee
- Jones, Bethune Wellington
- Jones, Howard S.
- Keating, William J.
- Kendall, William Beals
- Kimball, Frank Allan
- Kirkman, Alexander Sampson, Sr.
- Knapp, Robert Cole
- Kobbe, Carolyn Wheeler
- Koehler, Robert H.
- Koons, Franklin Stevenson
- Lamy, Henry Bernard, Jr.
- Lannin, Joseph John
- Lasher, Dr. Frank Hermance
- * Lawrence, Clifford Winfield, Jr.
- * Lehrenkrauss, Charles Frederick
- Littleton, Martin Wilson, Sr.
(aka Martin W. Littleton, Jr.)
- * Mabon, Samuel Clifton
- Mallett, Percy Smith
- Mallouk, George Elias
- Mariani, John Francis, Sr.
- McKinny, Alexander, Jr.
- McKinny, Alexander, Sr.
- McVitty, Edward Quinby, Sr., *Garstead*
- * Meeker, Samuel Mundy, Jr.
- Meissner, William Christen
- Mellen, Chase, Sr.
- Meneely, Charles Dickinson
- Merritt, Edward Charles, Sr.
- Merritt, Harold Francis, Sr.
- Miller, John Robinson, Jr.
- Miller, John Robinson, Sr.
- Minton, Henry Miller
- Mooney, Franklin Drake, Sr.
- * Moore, Arthur Standish
- Moore, Rufus Ellis
- Moran, Michael Arthur
- Moran, Robert G.
- Morehouse, David
- Morrell, Robert Whiting
- Morrow, Dr. Albert Sidney, Sr.
- Morse, Roy Bertram
- * Mortimer, Mrs. Edith
[See A. W. B. Wood entry.]
- Moyers, Bill
- Munson, Lawrence Josiah
(aka Lauritz Josiah Monsen)
- Murphy, William Gordon, Jr.
- Murray, Francis King
- Naething, Charles Frederick
- Nichols, John Treadwell
- * O'Brien, Justin Cameron
- O'Connor, Eugene Franklin, Jr.
- Ohnewald, George Henry
- Olena, Alfred Douglas
- * Orr, Henry Steers
- Osborne, Lawrence Woodhull
- * Ossman, John, Jr.
- Osterhout, Howard
- Otto, Carl Ludwig, Sr.
- Page, Walter Hines, Sr.
- * Pancake, Carl Oakley
- Parker, Don M., Sr.
- Parker, Glowacki Redfield
- Parsons, Argyll Rosse, Sr.
- Peace, Arthur W.
- * Peacock, Grant Allen, Sr.
- Pearsall, Harris Montgomery
- Pell, William Watson
- Pennington, Charles Gordon
- Pennington, Harold Douglas
- * Persell, Harry Alexander
- Peterkin, DeWitt, Sr.
- Peters, Ralph, Jr.
- * Peters, Ralph, Sr., *Wyndymeede*
- Pettit, Townsend Baldwin, Sr.
- * Pidgeon, Ashley E.
- Piel, Rudolph Alfred
- * Plunkett, Henry Wlloughby
(aka Harry Plunkett Grattan)
- Pratt, James Edward
- Pratt, James Guy
- Pratt, Robert Edward, Sr.
- Putnam, Hobart Hayes
- Reeves, Edward Duer, Sr.
- Rhett, William Brisbane, Sr.
- Ripley, Joseph Pierce
- Roche, The Reverend Spencer Summerfield
- Roever, Charles Sigmund
- Rose, Reginald Perry
- Rowe, Reginald Manchester, Sr.
- St. John, Edward Atkinson
- St. John, Frank Lamar, Jr.
- Salmon, Hamilton Henry, Jr.
- Salmon, Hamilton Henry, III
(aka Hamilton Henry, Jr.)
- Sayer, Murray
- Schley, Henry Spaulding, Sr.
- Smith, Clarence Browning
- Smith, Cyrus Porter, Sr.
- Smith, Herbert Ludlam, Sr.
- Snyder, William Robert
- * Southworth, Theodore
- Sperry, Lawrence Burst
- Spinzia, Ralph
- Stoddard, Caswell Wheeler

Villages

GARDEN CITY (cont'd)

Stricker, John Fritz
Stuberfield, William Francis
Studwell, Joseph Colson Knapp
Swett, The Reverend Canon Paul Flynn, Sr.
Sylvester, Peter Charles
Tapscott, Ralph Henry
* Tarbell, Gage Eli
Taylor, Dr. Quintard, Sr.
Taylor, Willard Underhill, Sr.
Thomas, Edward Clarke Oertel
Tibbs, Benjamin Hatfield
* Tjaden, Olive Frances
Tompers, George Urban
Townley, The Reverend Frank Maxwell
Townsend, Edward Nicoll, Jr.
Townsend, Edward Nicoll, Sr.
Townsend, Robert
Tunmore, John Septimus
Tunstall, Harry Gabriel
Turnbull, John Gourlay, III
Twining, Charles, *Iris Acre*
Tyner, Gerald Kerwin
Underhill, Rawson Kip, Sr.
* Underhill, Enoch William
Van Vranken, Dr. John Kellum, Sr.
Van Zandt, Federick Neville
Vaughan, Donald Cuyler, Sr.
Veitch, Charles Whitely
Voegel, Harry William
* Waddell, Wallace MacNab, Sr.
Ward, Sylvanus Dwight
Ward-Smith, Kenneth, Sr.
Warinner, Asa
[See W. H. Duryea entry.]
* Warren, Northam, Sr.
Weed, Leroy Jefferson
Welton, Dr. Thurston Scott
Whitney, Arthur Edward
Wigglesworth, Henry
Wildermuth, George C.
Wilson, Marshall Orme, Sr.
Winkhaus, John Theodore, Sr.
* Wood, Arthur William Blake
Wood, Frederick J.
* Woodruff, Timothy Lester
* Woodward, William G., Sr.
* Wyld, Robert Hasbrouck
Young, Benjamin Swan
Youngs, William Jones

HEMPSTEAD

Addison, Charles Lambert
* Alexandre, James Henry, Sr.
Almirall, Raymond Francis, *Ma Chaumière*
Amerman, William H. H., Jr.
Anderson, Ellery Oswald, *Waycroft*
* Bannerman, Parry Elwood
Barrett, Gilbert Conklin, Sr.

Belmont, August, II, *Blemton Manor*
Bromfield, Percy Butler
Bromfield, Percy Rushmore
Brown, Albert Winton, Sr.
Cameron, Walter Scott
Carlin, George Andrew
Carroll, Royall Phelps
Chamberlin, Dr. William Taylor
Chenault, Dr. Hortenius
Chenault, Kenneth Irvine
Cooper, Peter
Corwith, Lester F.
Courtenay, Adrian Henry, Sr.
Crandall, Dr. Floyd Milford, *The Pines*
Cruikshank, James
Duncan, Alexander Butler, *The Meadows*
Duryea, Wright, *Shortacre*
Edwards, Jesse
Eldridge, Lewis Angevine, Sr.
Fisher, Dr. Lamont H.
Forshay, Ralph Hoyt
Frost, Newberry Halstead
Hanemann, Edward Lewis
Harlow, Frank Strobridge, *Willisleigh*
Harper, Joseph Abner
Harriman, Edward Henry
* Hofstra, William Sake, *The Netherlands*
Hoppin, Samuel Howland
Hurry, Renwick Clifton
Ingraham, Frederick, Sr.
Ingraham, Richard, III
Jones, Dr. Dunham Carroll, *Bleak House*
Kellum, John
Kendrick, Frederick William, *Boxley*
* Kennedy, Henry Van Rensselaer, *Three Oaks*
* Kernochan, James Lorillard, *The Meadows*
Kilmer, Dr. Theron Wendell, Sr.
(aka Theron Sylvester Norton, Jr.)
Leighton, Alexander E.
Leighton, George Bridge
Leighton, John Langdon
Ludlum, Dr. Charles Henry
* Lyon, Edmund Burton, *Nearacre*
MacDowell, Noah, Jr.
Mulford, Charles Willian, *Langsyne*
Mulford, Miss Fannie, *Langsyne*
Mulford, Miss Harriet, *Langsyne*
Myers, Charles
Paterson, Basil Alexander
Paterson, David Alexander
Pease, Walter Albert, Jr., *Bethpage*
Pettit, Townsend Baldwin, Sr.
Rawlins, George Foster
Russell, Frank Henry
Stevenson, Maxwell, *The Lodge*
Tew, Benjamin Taylor
Thompson, Dr. Benjamin Franklin
Townsend, Robert Tailer, Sr.
Townsend, Stephen Van Rensselaar, Sr.
Vanderveer, Charles, Jr.
Van Vranken, Dr. Garrett Daniel

Villages

HEMPSTEAD (cont'd)

- Van Vranken, John Kellum, Sr.
Ward, Rodney Allen
Weller, Augustus Nobel
Whipple, Dana de Peyster, Sr.
Wright, Mary Eliza Bedford, *The Box*
Wright, Wilfred La Salles
* Young, Willis Henry, Sr., *Willisleigh*

HEWLETT

- Ayer, Frederick, II
Bertschmann, Jean Jacques
Blaine, Graham Burt
Bonner, Douglas Griswold, Sr.
Cartwright, Henry Rogers, Jr., *Applecot*
Chambers, William Ely, Sr., *Cornerware*
Cobb, Henry Ives, Jr.
Cox, Dr. Gerard Hutchinson, Sr.
Farr, John, Jr.
Gruner, Otto Harry, Sr.
Livingston, Johnston, II, *Homeacre*
(aka Johnston Livingston, Jr.)
* Macy, Valentine Everit, Sr.
Malcolm, George Ide, Jr.
Malcolm, George Ide, Sr.
Matthews, John
Miller, Lawrence McKeever, Sr.
Moller, Hans Eskildsen
Philbin, Stephen Holladay
Robins, Thomas, IV
* Sizer, Theodore
Southgate, Richard
Welsh, Joseph Wickes, Jr.
Whipple, Julian Van Ness, *Rustee Granit*
Whitlock, Bache McEvers, Jr., *Meadowview*

HEWLETT BAY PARK

- Allison, Dr. Benjamin Roy
Ballantine, Herbert Wilgus, Sr.
Beadleston, Chauncey Perry
Bigelow, Bushnell
Blanchard, Walter Scott, Sr.
Boulton, Howard, Sr.
Braman, Chester Alwyn, Jr.
Brett, George Platt, Jr.
Buck, Harold Winthrop
* Cady, Everett Ware, Sr.
* Carter, Russell Steenback, *The Villa Blue*
Chambers, William Ely, Sr., *Cornerware*
Childs, Edwards Herrick
Cobb, Boughton, Sr., *The Chimney Corner*
Coe, Elmore Holloway
* Connable, Arthur W., *Boxwood*
Crane, Clinton Hoadley
Davis, William Shippen, Sr.
Delafield, Lewis Livingston, III
Deshler, Charles Franklin, Jr.
Finlayson, Daniel Aylesbury, Jr.

- Fuller, Paul, Jr., *Four Winds*
Goodhue, Francis Abbot, Jr.
Goodwin, Robert Henning, *Cedar Corners*
Green, Harry Thomas Sinclair
Greenleaf, John Cameron, Sr.
Griswold, John Augustus, Sr.
Gwynne, Walter Lee
Hanemann, John Theodore, Sr., *Aboha Hanta*
Harper, Joseph Henry, Jr.
Harrar, Dr. James Aitken
* Harris, Tracy Hyde, Jr., *Wistaria Lodge*
Iverson, Maynard Cady
Jones, Thomas Catesby, Sr., *Green Plains*
Kane, John Patrick, Jr.
Kilbreth, James Truesdell, Jr., *Bush Corners*
King, Hugh Purviance, Sr.
Kingsland, Harold Nutting
Kip, Ira A., Jr.
Lancaster, John Edward, Jr.
Larkin, John Adrian, Sr.
Lewis, Henry Llewellyn Daingerfield, Jr.,
Merriemfield
Lovering, Joseph Swain, II, *Sunny Ridge*
* Macy, Carleton, *Meadowwood*
* Macy, Carleton, *Wonderwhy*
* Macy Carroll, *Birch Corners*
Maitland, James William
Meany, Shannon Lord, Sr.
Miller, Danforth, Sr., *Birch Corners*
Morris, Alfred Hennen
* Morris, Stuyvesant Fish, Jr.
Norris, Donald Lee, Sr.
Olney, Sigourney Butler, Sr.
Osborne, Robert Klipfel
Parker, Henry Seabury, Sr., *The Farm*
Philbin, Ewing Reginald, Sr., *Pine Tree House*
(aka Erving Reginald Philbin, Sr.)
Pierce, Walter Bryant, Jr.
Pratt, Frederick Theodore
Proctor, William Ross, Jr.
Ridder, Joseph Edward, Sr.
Rives, Francis Bayard, *Mapleglades*
Robins, Samuel Davis, Sr.
Russell, Dr. Thomas Hendrick, *Channel's End*
Schultz, Albert Bigelow, Sr.
* Scott, John Frederick, *Rosebank*
Slee, James Noah, Jr.
Slesinger, Laurence Anthony
Steinberg, Julius
Stevenson, Joseph Hutchinson, *The Farm*
Stevenson, Richard Wilson, Jr., *The Farm*
Strong, Edwin Allen
Van Rensselaer, Bernard Sanders
Van Tine, Addison Allen
Veeder, Paul Lansing, *Meadowwood*
Voss, William, *Merriemfield*
* Whiton, Henry Devereux
Wright, John B.
Zara, Francesco A.

Villages

HEWLETT HARBOR

- Akin, Albert John, II, *Homewood*
Auerbach, John Hone, Sr., *Seawane*
* Auerbach, Joseph Smith, *Seawane*
Dwyer, Martin, Sr.
Francklyn, Reginald Gebhard
Kaplan, Louis
 [See *Lissberger* entry.]
Kingsley, Darwin Pearl, Jr., *High Tide*
Lissberger, Benjamin, *Twin Gables*
Loft, George William
 [See *Lissberger* entry.]
Long, William Henderson, Jr., *Noranda*
* Marshall, Levin Rothrock, Sr., *Hawkswood*
Milholland, James Clarke
Mixer, George, Sr., *Strode*
Nicoll, De Lancey, Jr., *Three Acres*
Paine, Edward Stetson
Peabody, Rushton, Sr., *Cherry Bounce*
* Pearce, Arthur Williams
Pier, Roy, *Breezy Way*
Rolston, Brown, Sr.
Sellar, Norrie, Sr.
Thomas, Theodore Gaillard, III
Thompson, James Walter
Timpson, Carl William, Sr., *Windy Top*
Voss, William Hude Neilson

HEWLETT NECK

- Blackwood, Arthur Temple
Delafield, Robert Hare, Jr.
* Dwight, Philip J.
French, Seth Barton, Sr.
* Handy, Courtlandt Waite
Heymsfeld, Ralph
 [See *Handy* entry.]
Herrick, Harold Edward, Sr.
* Hewlett, Roger Sanderson
* Jacobi, Sanford
Kobbe, Frederick William
Locke, Campbell, Sr.
Logan, John Alexander, III
* Morris, McLean Forman, Sr.
Robb, Hampton
Roosevelt, Oliver Wolcott, Sr.
Searle, John Endicott, Sr.
Stephan, Albert Ralph
Steven, William Dixon
Stewart, Samuel Bradford, Jr.
Tucker, St. George Brooke
Van Rensselaer, Kiliaen Maunsell, II
Van Rensselaer, Maunsell, Jr., *The Haven*
Varlet, Viscount René Georges
Veeder, Francis Lansing
Wallace, Edward Secomb
Warren, Charles Elliott, Sr., *Still Pond*

LAWRENCE

- Adams, Charles Closson, Sr., *Oak Lodge*
Adams, William, Jr.
Adams, William, III, *Landfall*
Adams, William Herbert
Alexandre, Frderick Francis, Sr., *Nieman*
Almy, Frederick, Jr.
Anderton, Dr. William Bancroft, *Ye Corners*
Auchincloss, Joseph Howland, Sr.
Auchincloss, Samuel Sloan, Sr., *Whale Acres*
* Ballantine, John Herbert, II
Barnard, John Augustus, *Tigh-na-Curach*
Barnard, John Lawrence
Barnes, Roderic Barbour
Bateson, Edgar Farrar, Sr.
Belsterling, Charles Starne
Benedict, Le Grand Lockwood, Sr., *Nooke*
Bentley, Edward Manross, *Cherrygarth*
Bentley, Edward Sailsbury, Sr., *Cherrygarth*
Bierwirth, John Edward
Bierwirth, Dr. Julius Carl
Blagden, Thomas
Blaine, Graham Burt, Sr.
Bogert, Henry Lawrence, Jr.
* Boulton, William Bowen, Sr., *Avila*
Bowker, Horace, Sr.
Breed, William Constable, *Whale Acres*
Brooks, Ernest, Sr., *The Moorings*
Brown, Mary Crosby Renwick, *Windward*
Brownback, Garrett A.
Burr, Robert Page, Sr.
* Burr, Winthrop, Sr., *Orchard Hall*
Burton, John Howes, *Albro House*
* Burton, Robert Lewis, *Albro House*
Carpenter, Edward Novell
Chapman, Henry Otis, Jr.
 [See *S. Merritt II* entry.]
Clark, Samuel Adams, Sr.
* Crane, Warren Seabury, *East View*
Dall, Charles Whitney, Sr.
Dall, Stewart Maurice, Sr.
Darlington, The Rev. Gilbert Sterling Bancroft
de Aguilar, Elizabeth Pendleton Slattery
Delafield, Lewis Livingston, Jr.,
 Norton Perkins Cottage
Derby, Robert Mason, Sr.
De Veau, George Putnam
Devereux, Alvin, II
Dixon, Courtland Palmer, II, *The Causeway*
Dixon, William Palmer, Jr.
Du Bois, Arthur Mason
Dunham, Carroll, III, *Stone Lodge*
Dunstan, James Samuel, *Brightside*
Eaton, Walter Bradley, *The Corral*
Eddy, William Higbie, Sr.
Edsell, Ralph James, Jr.
Elwell, Richard Derby, Sr.
* Erhart, William Herman, *Five Oaks*
Ferris, Morris Douw, Sr.
Finch, Stephen Baker, Sr.
* Forrest, Richard Earp, *Longwood*

Villages

LAWRENCE (cont'd)

- Francke, Albert, Sr.
 Gamel, Isaac
 Garde, John Franklin, Jr.
 Geer, William Montague, Jr.
 Gildersleeve, Raleigh Colston, *Red House*
 Goadby, Arthur McMaster, *Wistaria*
 Green, Walton Atwater, Sr.
 Greenberg, Henry
 [See W. Burr, Sr. entry.]
 Greene, Herbert Gouverneur
 Grew, Henry Sturgis, Jr.
 Hamill, Robert Lyon, Sr.
 Hard, Anson Wales, Sr., *Driftwood*
 Hard, DeCourcy Lawrence, Sr., *Briarwood*
 * Harper, Joseph Henry, Sr., *Brightside*
 Harrison, Milton Strong, Jr.
 Hatch, Alden R., *Somerleas*
 Hatch, Frederic Horace, *Somerleas*
 * Hazard, William Ayrault, Sr., *Meadow Hall*
 Herrick, Harold, *The Meadows*
 Hewlett, George H., *Rock Hall*
 * Hewlett, James Monroe
 Hinckley, Julian
 Hinckley, Samuel Neilson, *Son Ridge*
 * Hinckley, Samuel Parker, *Sunset Hall*
 Hodges, John King
 Holmes, Emlen Williams, II
 Hoxie, I. Richmond, Sr.
 Hurd, George Frederick
 Ivison, William Crane, *Wilcemay Farm*
 Keene, James Robert
 Kelly, Dr. Aquin S.
 * Kniffin, Howard Summers, Sr., *Restleigh*
 Knopf, Samuel
 Koehne, John Lawrence, Sr.
 Koehne, Richard Sperry, Sr.
 * Ladd, William Fowle, Jr.
 Lanman, Jonathan Trumbull, Sr.,
 Orchard Hall
 Lawrence, Alfred Newbold, I
 Lawrence, John L., Sr., *Moorlands*
 Lawrence, Newbold Trotter, Sr., *Homewood*
 Lefferts, Franklin Baker
 * Lefferts, Marshall Clifford, Sr., *Hedgewood*
 Lewis, Edison
 Livingston, John Griswold, Sr.
 Locke, Campbell, Sr.
 * Lord, Daniel de Forest, V, *Sosiego*
 Lord, Franklin Butler, Sr.
 Ludlow, Alden, Rodney, Jr.
 Lynch, Edmund Ambrose, Sr.
 Lynch, George Philip, Sr.
 Macy, George Henry, *The Bungalow*
 Maitland, James William
 * Mann, Samuel Vernon, Jr., *Grove Point*
 Marmo, Anthony
 Marshall, May Louise Bamber
 Martin, Thomas Stephen, *Mistletoe Way*
 McKee, Lanier, *Recess*
 McWilliam, Culver B.
 * Merrill, Payson, Sr.
 Merritt, Schuyler, II
 * Meyerkort, Clara Oakley
 Meyerkort, John, Jr.
 (aka Jack Meyerkort, Jr.)
 Miller, William Wilson, *Villa Nancy*
 Moller, Charles George, Jr., *Wayside*
 Moller, Charles George, III
 Morrow, Robert
 Mumford, Philip Gurdon, *Journey's End*
 Newton, Arthur Ulysses
 Niles, George Casper
 Norris, Alfred Lockwood
 Norris, Alfred Oliphant
 Olney, Peter Butler, Jr.
 Olney, Peter Butler, Sr., *Meadowside*
 Palmer, E. T.
 Pardee, Dr. Ensign Bennett,
 Edgewater Cottage
 Pardee, Dr. Irving Hotchkiss,
 Edgewater Cottage
 Patterson, Edward Liddon, *Rock Hall*
 * Peabody, Richard Augustus, *Terrace Hall*
 Peck, Arthur Knowlton, Sr.
 Peck, Lee Wallace
 Pell, Walden, Jr., *Oak Lawn*
 * Perkins, Norton, *Whale Acres*
 Philbin, Jessie Holladay
 * Philips, Frederic Dimon, *Greyhouse*
 Philips, William Frederic, *Fairway*
 Pinkus, Frederick S.
 (aka Solomon Friederick Pinkus;
 Frederick Solo Pinkus)
 Pittman, Ernest Wetmore
 Polk, Frank Lyon, Sr.
 * Porter, Henry Hobart, Jr., *Lauderdale*
 Potter, Lars Sellstedt, Jr.
 Pratt, Reginald Tyler
 Prescott, William F.
 Pritchard, Clarence Franklin
 Quinby, John Gurley, Jr.
 Raymond, William, Sr.
 Rees, Harold Baxter, Sr.
 Richard, Auguste, *Tenant Farm*
 Richards, Junius Alexander, Sr.
 Roberts, Albert Samuel, Jr., *Longwood Hall*
 Robinson, Beverley Randolph
 * Rogers, Edward Sidney
 Ruperti, Justus, *Marigolds*
 Rutter, John Alexandre, Sr.
 Rutter, Nathaniel Edward, Jr.
 Sage, Russell, *Cedarcroft / Cedar Croft*
 * Sampson, Sally Phillips Blagden
 Sanford, George Baylies, *The Byways*
 Sargent, Charles Sprague, Jr.
 Seymour, Origen Storrs, II, *Sosiego*
 Sherman, Charles E., *The Brae*
 * Sklar, Dr. Leo, *Byrnewood*
 * Slade, Francis Henry
 Sloan, Benson Bennett, Sr., *Ballyracket*
 * Sloan, Thomas Donaldson, Sr., *Wilton Gables*

Villages

LAWRENCE (cont'd)

- Smith, Augustine Jacquelin, *Sunnyside*
Stanton, Louis Lee, Jr.
Stanton, Louis Lee, Sr.
Stevens, Alexander Henry
* Stevens, Byam Kirby, III
Stevens, Eben, *The Mount*
Stewart, John Henderson, Jr.
Stone, Herman Foster, *The Moorings*
* Strauss, Peter, Sr.
Sturgis, Henry Sprague
Sturgis, William James, Sr.
Talmage, John Frelinghusen
Talmage, Prentice, Sr.
Taylor, Jennie McCombe
 [See A. S. Roberts entry.]
* Taylor, Talbot Jones, Jr., *Talbot House*
Taylor, Talbot Jones, III
Taylor, William Reed Kirkland, Sr.
Thayer, Benjamin Bowditch, Jr.
Thompson, Joseph TodHunter, *Holly Holm*
Thorpe, Warren Parsons, Sr.
Throop, Enos Thompson, IV
Tyner, John Hill
Walsh, James William, Jr.
Walsh, James William, III
Wardwell, Helen R.
 [See F. D. Philips entry.]
Weeks, Herbert Augustus, *Meenahga*
Weeks, Louis Seabury, Sr.
Welsh, Joseph Wickes, Sr.
White, Thomas Francis, Jr.
White, Thomas Francis, Sr.
White, Victor Gerald, Sr.
Whitman, Alexander Harvey, Sr.
Whitman, Eben Esmond, Sr.
Wickersham, Cornelius Wendell, *Briarwood*
* Wickersham, George Woodward, *Marshfield*
Williams, Ichabod Thomas, II
Williams, Thomas, II
Williams, Thomas Resolved, *Windemere*
Wood, Howard Ogden, Jr.
Woolverton, William Henderson, Jr.
Work, James Henry, Jr., *Engleside*
Work, James Henry, Sr., *The Gowans*
Wyeth, Leonard Jarvis, IV

LIDO BEACH

Bernstein, Lester

LYNBROOK

Chambers, Jak
 (aka James A. Chambers)
Chambers, Whittaker
 [See Jay Chambers entry.]
Hillman, Sidney

MERRICK

- Arledge, Roone Pinckney, Jr.
Cammann, Herbert Schuyler, *Lindenmere*
* Cammann, Herman Henry, *Lindenmere*
Cammann, Schuyler Van Rensselaer,
 Lindenmere
Cohen, Bennett R,
Greenfield, Jerry
Krugman, Paul Robin
Sturgis, William, Jr.

MINEOLA

Gerstner, Louis Vincent, Jr.

OCEANSIDE

Iger, Robert Allen

POINT LOOKOUT

Hillman, Sidney

ROCKVILLE CENTRE

- Feldstein, Martin Stuart
Goodwin, Doris Helen Kearns
Hawke, John Daniel, Jr.
* Hyland, John Francis
Kamen, Dean Lawrence
Roth, Arthur Thomas
Silvers, Robert Benjamin
Skelos, Dean George
* Stray, Edward James, Sr.

SALISBURY

- Davie, Preston, Sr., *The Oasis*
Ellis, Ralph Nicholson, Sr.
Eustis, George Peabody
Eustis, James Biddle, Sr.
* Ladenburg, Adolph, *Heathcote*
 (aka Moritz Adolph Emil Ladenburg)
Lebaudy, Jacques, *Phoenix Lodge*
Olcott, William Morrow Knox, *Phoenix Lodge*
* Roosevelt, Elliott, Sr., *Half Way Nirvana*

UNIONDALE

- Bird, Oliver William, Jr., *Greenhedge*
Hadden, James E. Smith, *Uniondale Farm*
Rennard, John Townsend
* Ripley, Sidney Dillon, Sr., *The Crossways*
Scott, Charles Robert, *The Crossways*

Villages

WANTAGH

Townsend, Frances Mary Fragos
Weisselberg, Allen Howard

WEST HEMPSTEAD

Brower, Howard Stanley, *Longdrive*
Collins, William
[See C. M. Robinson entry.]
Earle, Alexander Morse, Sr.
Johnson, Samuel E.
[See C. M. Robinson entry.]
* Parker, Carleton Allen, *Stonehouse*
Robinson, Charles M.

WOODMERE

Atwell, George Joseph, Sr.
Banks, Harold Purdy
Brett, George Platt, Jr., *Justamere Cottage*
Brown, Dr. Frederick Tilden, *By-the-Way*
Camprubi, Jose Aymar
Candler, Flamen Ball
Chapman, Gilbert Whipple, Sr.
Cooper, Leslie Bradford
Delafield, Maturin Livingston, II
Fosdick, Clark
Furst, Michael
Glass, Brent David
Gluck, Louise Elizabeth
Gruner, Otto Harry, Jr.
Gwynne, Frederick Walker
Hodges, Wetmore, Sr.
* Hofheimer, Lester
* Jacobi, Harold, Sr.
Karan, Donna Ivy Faske
Keisler, Peter Douglas
Kingsland, Harold Nutting
La Mont, Herbert Murray
* Lord, George de Forest, Sr.
Mills, Edward Shorrey
Morgenthau, Julius Caesar, Sr.
Murray, Herman Stump
Neilson, Robert Hude
Nichols, John Dykes, *Nicholyn*
Parkhurst, William Man
* Perkins, Charles Lawrence, Jr.
Recht, William, Sr.
Remick, Joseph Gould
* Schieffelin, John Jay, Sr.
* Schill, Emil
Scott, Henry Clarkson, Sr.
Shepard, Frederick White
Sise, John
Spinzia, Peter

Stricker, Hans Carol, *The Orchard*
Wright, John B.

WOODSBURGH

Ballantine, John Holme, II, *Homeridge*
Bradford, George Dexter
* Chapman, Henry Otis, Sr.
Cox, Daniel Hargate
* Fox, William, *Fox Hall*
Hatch, Frederic Horace
Herrick, Newbold Lawrence, Sr.
Knowlton, Eben Joseph
Low, Ethelbert Ide
* Marks, Arthur David, Jr.
Marshall, Charles Alexander
Marshall, James Markham, II
* McCrea, James Alexander, II
* Morgenthau, Maximilian, Sr.
* Peck, Arthur Nelson
* Schlossberg, Arnold, Sr.
Sloan, Robert Sage, Sr., *Chilton Gables*
Stebbins, George Ledyard, Sr.
Timpson, James
Van Siclen, George West
Wainwright, Loudon Snowden, Sr.
Ziegler, Frederick J.
Ziegler, Henry Ludwig W.



*Emily Louise Stevens Ladenburg
(Mrs. Adolph Ladenburg)
aboard the British tank Britannia in New York City, 1918*

About the Authors

Judith and Raymond Spinzia are former Long Island residents, now residing in central Pennsylvania. Their first book, *Long Island: A Guide to New York's Suffolk and Nassau Counties* (New York: Hippocrene Books, 1988; 1991 revised; 2008 revised), is a standard reference book which has been used as a textbook for teaching Long Island history and can be found in almost all public libraries and schools on Long Island.

The Spinzias write and speak, jointly and separately, on a variety of Long Island-related subjects including the North and South Shore estates, Tiffany stained-glass windows, and the Vanderbilts of Long Island. On several occasions their lectures have been chosen by the former radio station of *The New York Times*, WQXR, as the cultural event of the day in the New York Metropolitan area. Additionally, they have been featured on local television and radio programs and in articles published by *The New York Times*, *Newsday*, and other regional newspapers.

The Spinzias served as Long Island history consultants for a local cable television channel that, in an effort to encourage local interest, aired material from their guidebook twice daily. They also were consultants for a Japanese television network for a documentary on Louis Comfort Tiffany and contributed material to the Arts and Entertainment Network's "Biography" series for its presentations on the Vanderbilt and Tiffany families.

Their six-volume documentation of Long Island's estate era presently includes:

- Long Island's Prominent North Shore Families: Their Estates and Their Country Homes*. 2 volumes, 2006, revised 2019.
- Long Island's Prominent South Shore Families: Their Estates and Their Country Homes in the Towns of Babylon and Islip*, 2007, revised 2021.
- Long Island's Prominent Families in the Town of Hempstead: Their Estates and Their Country Homes*, 2010, revised 2022.
- Long Island's Prominent Families in the Town of Southampton: Their Estates and Their Country Homes*, 2010.
- Long Island's Prominent Families in the Town of East Hampton: Their Estates and Their Country Homes*, 2020.

The following articles by the Spinzias can be downloaded at spinzialongislandestates.com:

Spinzia, Judith Ader.

- "Artistry In Glass: Louis Comfort Tiffany's Legacy In Nassau County." *The Nassau County Historical Society Journal*, 1991:8-17.
- "Artistry In Glass: The Undisputed Master, Our Oyster Bay Neighbor." *The Freeholder* 2 (Winter 1998):3-5; and 2 (Spring 1998):3-5, 24.
- "Louis Comfort Tiffany: A Bibliography Relevant to the Man, His Work, and His Oyster Bay, Long Island, Home." 2010
- "Women of Long Island: Clare Boothe Luce (1903-1987), The Long Island Connection" *The Freeholder* 2 (Summer 2009):3-5; 17-10.
- "Women of Long Island: Cornelia Bryce Pinchot, Feminist, Social-Activist – The Long Islander Who Became First Lady of Pennsylvania." 2010
- "Women of Long Island: Mary Elizabeth Jones; Rosalie Gardiner Jones." *The Freeholder* 11 (Spring 2007):2-7.
- "Women of Long Island: Mary Williamson Averell Harriman; her daughter Mary Harriman Rumsey." *The Freeholder*, 12 (Spring 2008):8-9, 16-20.

Spinzia, Raymond E.

- "Adultery, Drugs, Murder, Untimely Deaths, and Long Island's Prominent Families: A Tangled Web." 2011
- "Elliott Roosevelt, Sr. – A Spiral Into Darkness" *The Freeholder* 12 (Fall 2007):3-7, 15-17.
- "In Her Wake: The Story of Alva Smith Vanderbilt." *The Long Island Historical Journal* 6 (Fall 1993):96-105.
- "The Involvement of Long Islanders in the Events Surrounding German Sabotage in the New York Metropolitan Area 1914-1917." 2019, revised 2022
- "Long Island Statesmen and Diplomats." revised 2020 and 2022
- "Michael Straight and the Cambridge Spy Ring." *The Freeholder* 5 (Winter 2001): 3-5.
- "Socialite Spies: The Grandchildren of Henry Baldwin Hyde, Sr." *East Islip Historical Society Newsletter* 16 (March 2008):1, 3. revised 2022
- "Society Chameleons: Long Island's Gentlemen Spies." *The Nassau County Historical Society Journal* 55 (2000):27-38.
- "Sumner Welles: Brilliance and Tragedy." *The Freeholder* 9 (Winter 2005):8-9, 22.
- "Those Other Roosevelts: The Fortescues." *The Freeholder* 11 (Summer 2006):8-9, 16-22.
- "To Look in the Mirror and See Nothing: Long Islanders and the Office of Strategic Services and Its Successor, the Central Intelligence Agency." revised December 2017 and 2022
- "Winning the Franchise: Long Island Activists in the Fight for Woman's Suffrage and Their Opponents, Long Island's Anti-Suffragists." 2018, revised 2022

Spinzia, Raymond E. and Judith A. Spinzia.

- "*Gatsby*: Myths and Realities of Long Island's North Shore Gold Coast." *The Nassau County Historical Society Journal* 52 (1997):16-26.